

CYLINDERS

SECURITY LOCKING SYSTEM

2022 CATALOGUE



Customization



Quality Assurance



Product Innovation



EOS SECURE
Never Compromise on Security

CATALOG

Company Profile	3
Production Line	4
Other Automatic Machines and Strict Quality Control Methods	7
Experienced R&D Team to Design What You Want	8
Certificates	9
Normal Key Cylinder	10
American Standard Lock Cylinder	19
Key pins / Master Key Pins for SFIC / BEST Keyway	25
High Security Cylinders	29
American Standard Cylinder with telescopic pin structure	37
Telescopic Cylinder Systems Components	38
Different Accessories for Different Functions	39
Active Pins Cylinder with Passive Pins	40
Other Products	45
Other Functions	58

ABOUT EOS

EOS is one of the leading manufacturers for **mechanical lock cylinders**. We started to produce mechanical lock cylinders from 2011. Our cylinder products are widely promoted by **door manufacturers, locksmiths, DIY hardware shops, architectural companies, traditional hardware dealers** and so on.

With over 10 years' industrial experience, we are the professional manufacturer that understands our clients very well. We mainly export the lock cylinders to **Europe, North America, South East Asia, South America, Middle East Area** and so on. Welcome OEM/ODM customers and customers wanted to be our Agent.

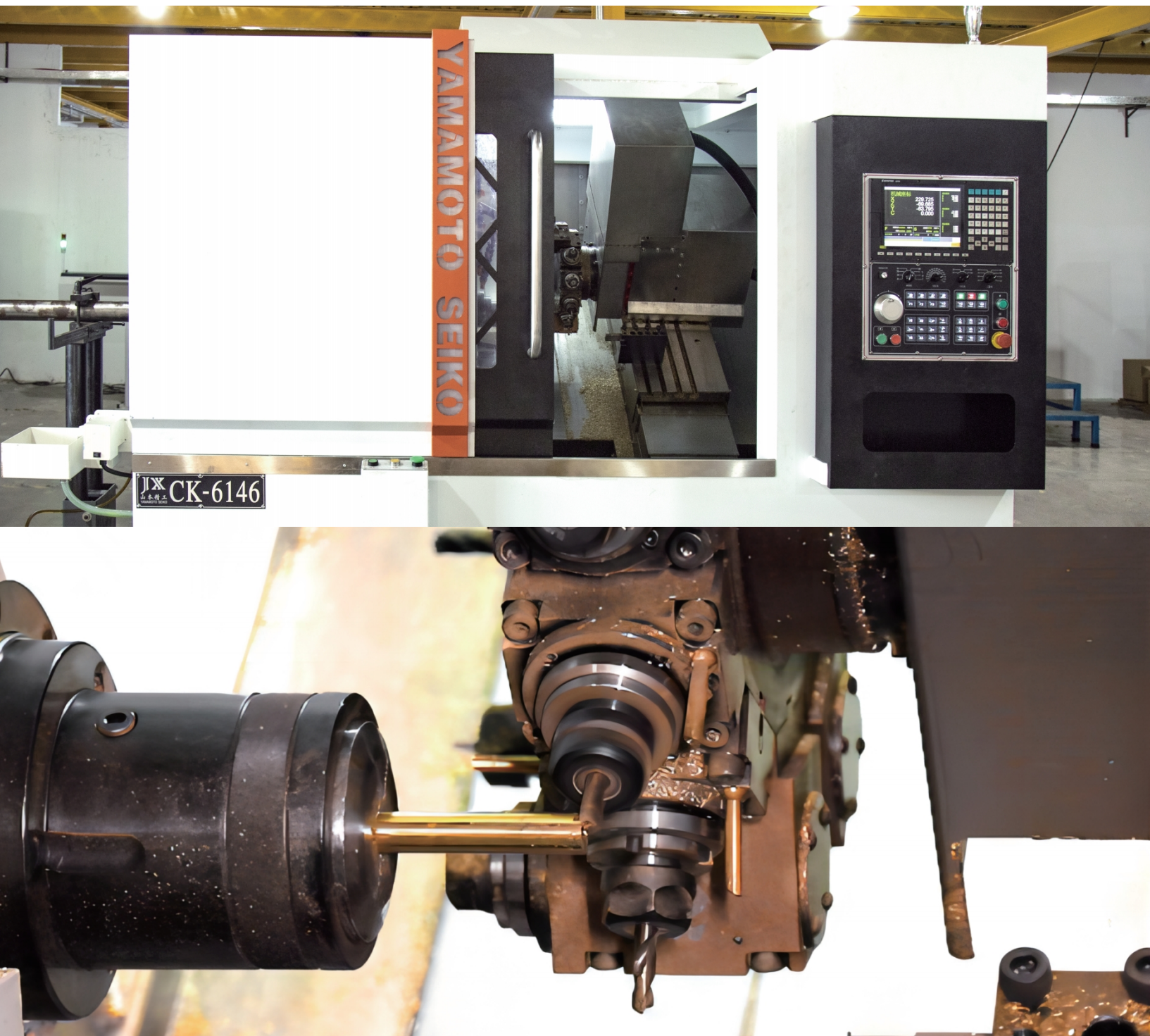




JAPANESE SWISS-TYPE AUTOMATIC LATHE MACHINE

Advantages:

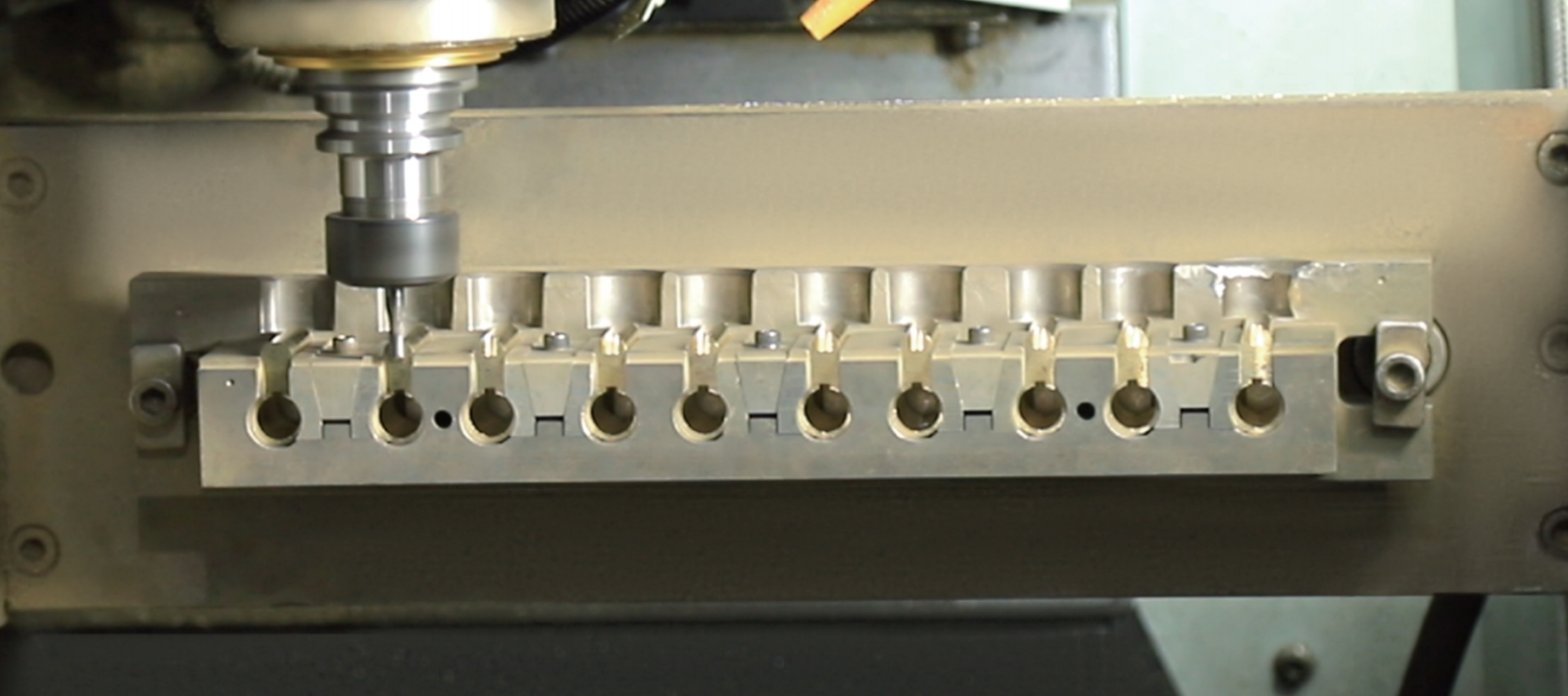
- Japanese Brand Tsugami, fast and precise.
- Use on production of high precision cylinders.
- Quick and efficient way to produce samples.



CNC ADVANCED TURNING AND MILLING MACHINE

Advantages:

- Finish drilling, milling, lathing at one time.
- Fast and precise machining.
- Quick and efficient way to produce samples.

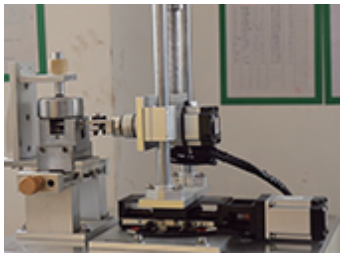
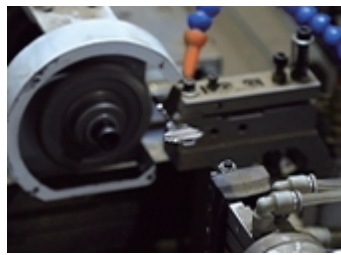
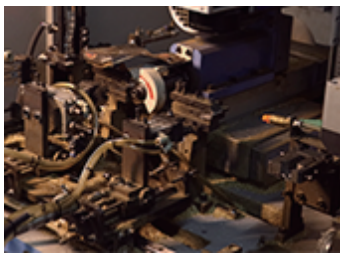
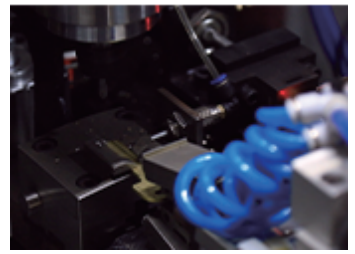
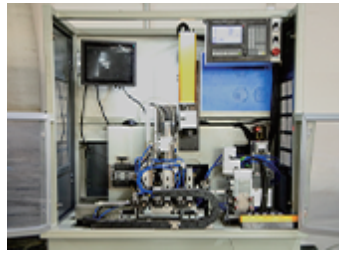
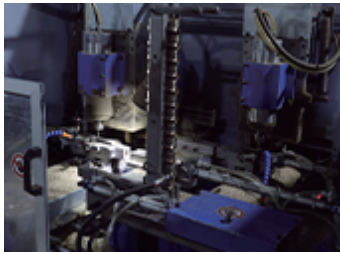


CNC 4-AXIS MACHINING CENTER

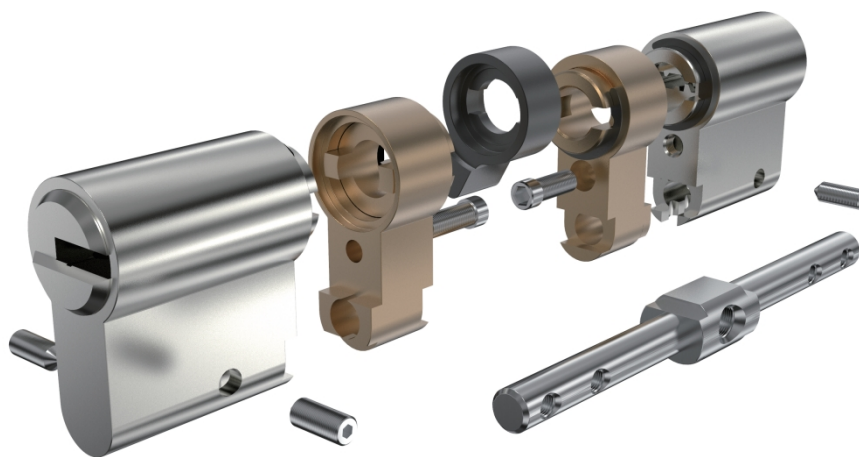
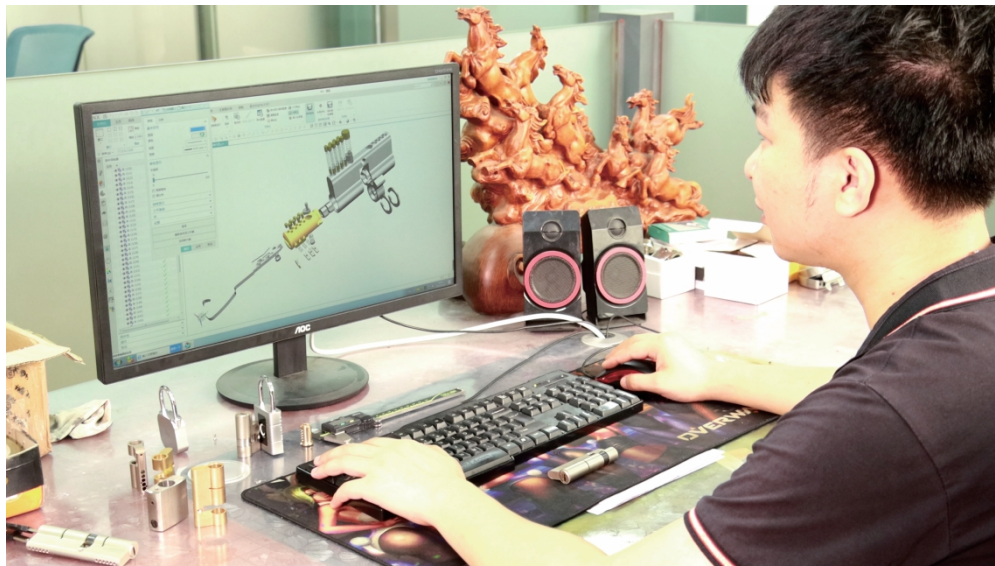
Advantages:

- Finish machining with many different toolings at on time.
- 4-axis to finish all the tasks from different angles.
- Quick and efficient way to produce samples.

OTHER AUTOMATIC MACHINES AND STRICT QUALITY CONTROL METHODS



EXPERIENCED R&D TEAM TO DESIGN WHAT YOU WANT



- Share your ideas about new products.
- We issue the technical drawings.
- Then we make samples before mass production.

CERTIFICATES



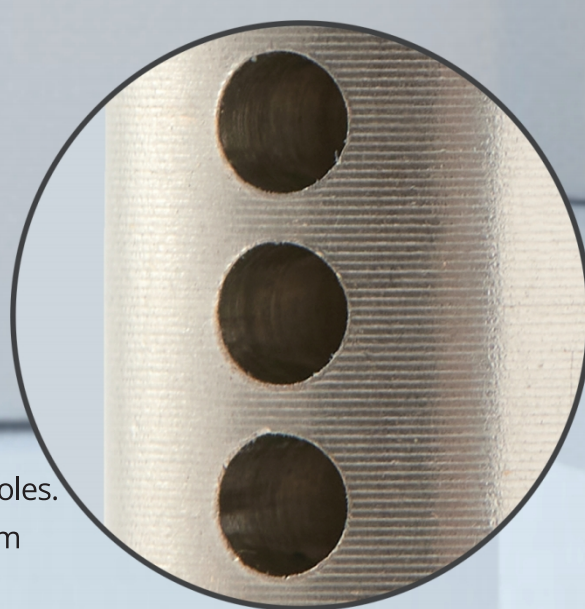
NORMAL KEY CYLINDER



Pinning kits for repin and
master pinning in local

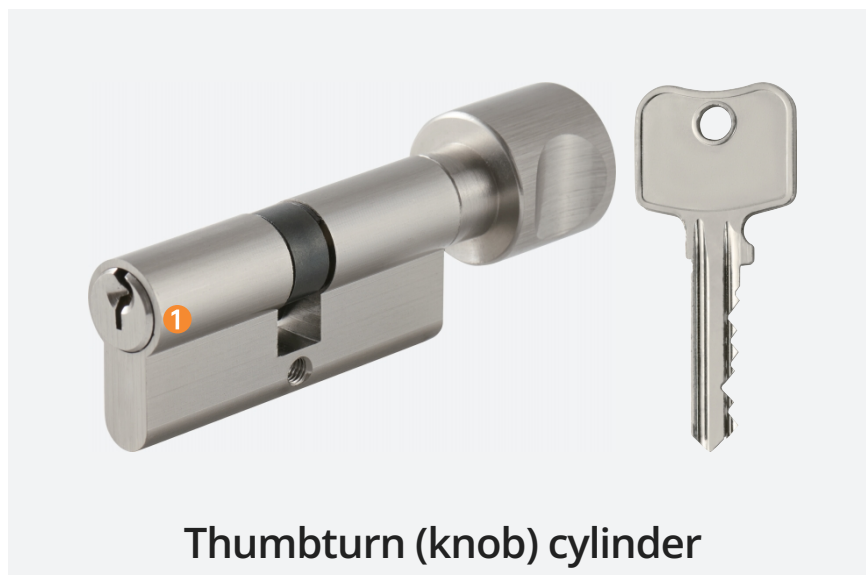


No chamfers around the pin holes.
Perfect for master key system





1



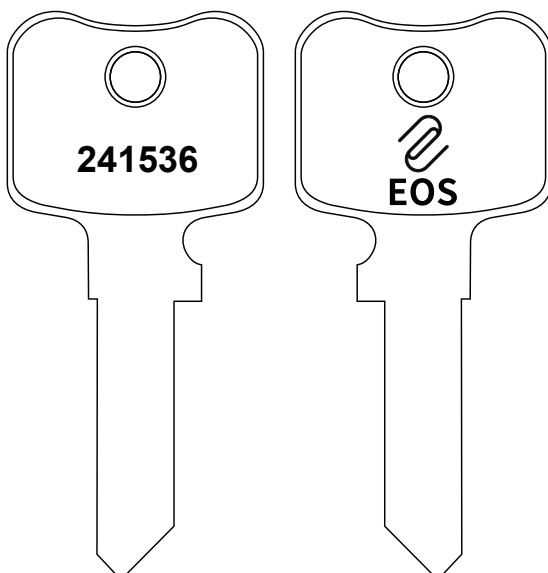
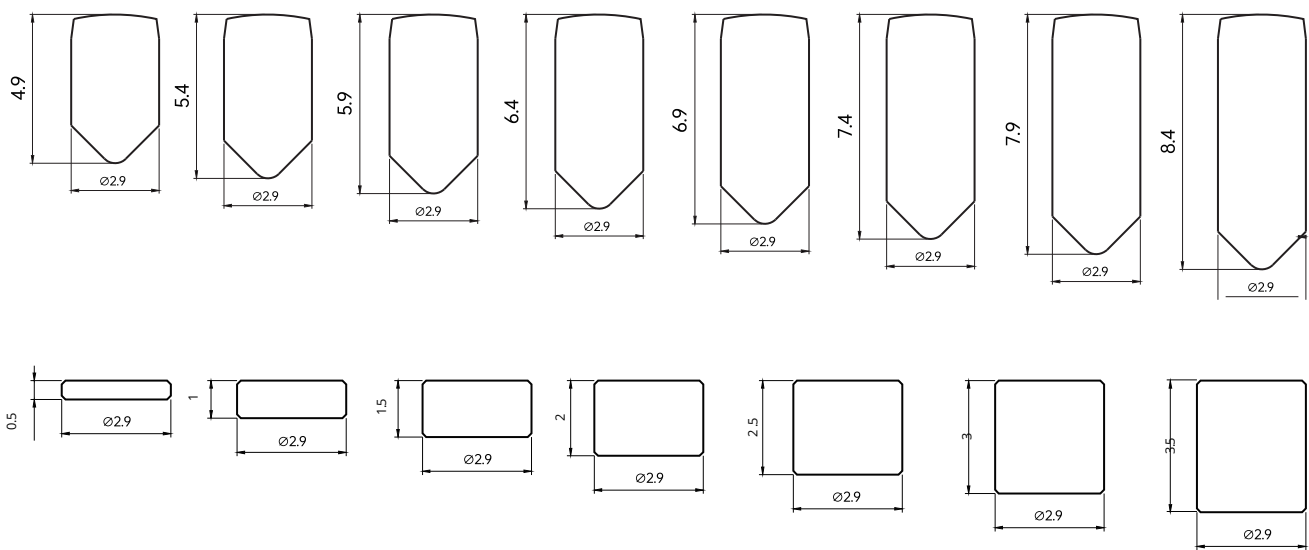
- Customized different length.
- 0.1-0.15mm gap between plug (rotor) and housing. 1
- Available for different finishes. Brass keys.
- Mostly used key profile: Yale, Tesa, Schlage, C4, and so on.

Two way to do the master key sytem

A

We normally offer bottom **pins**, **driver pins**, **master pins** and **key blanks** to customers who have in-house locksmiths or suppliers offering locksmith services.

(Unit: MM)

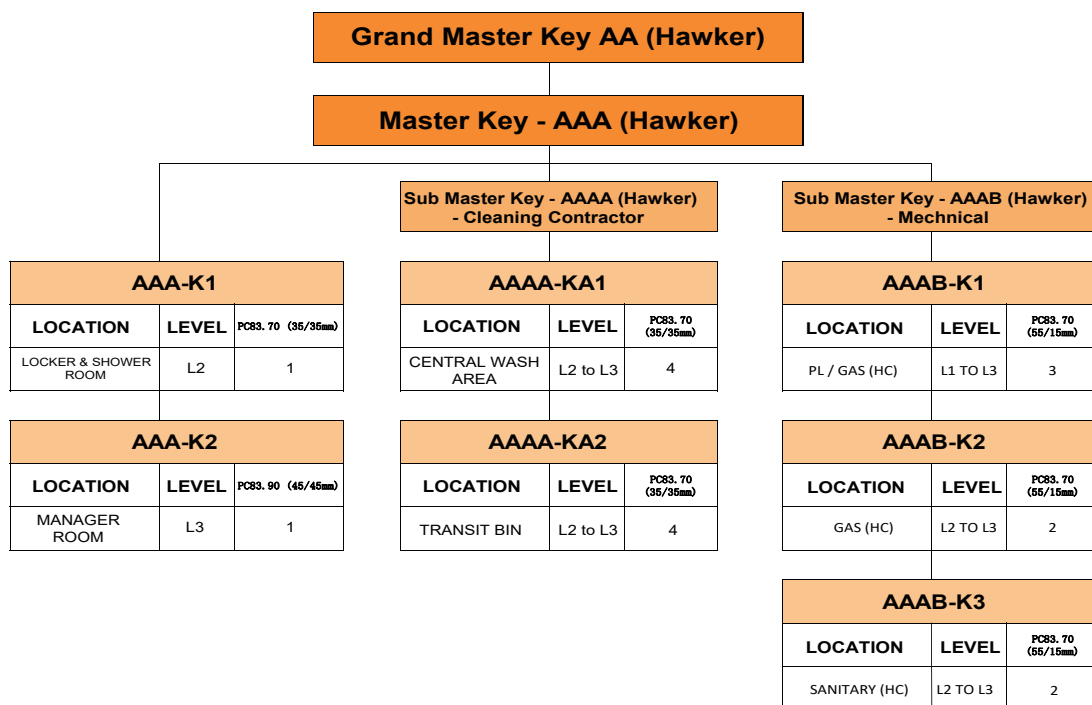


Allen screw seal pins cylinder for fast rekey



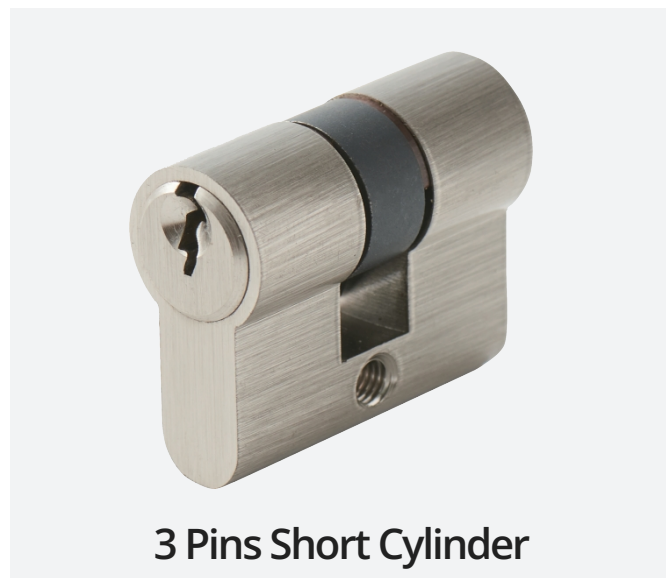
We can supply the assembled cylinder with master key system based on customer key chart.

1. We received the key chart from our customer.



2. We issue the **code lists (different key numbers, master pin number and bottom pin number)** before assembling the locking system. We send the code list to clients for confirmation normally. It will be easy for them to check the cylinder during installation. For **future extension consideration**, we also save the code lists in our computer. So that we will understand all the key numbers that we applied in the project and it's easy for us to expand more cylinders in the same project.

PROJECT: Honour MAIN BUILDING			MK-AAA							
ITEM	KEY CODE	KEY NUMBER	CYLINDER TYPE	KEY/CYLINDER CODE	CYLINDER QUANTITY	KEY QUANTITY	LABEL	KEY NUMBER	BOTTOM PINS	MASTER PINS
MK KEY	GMK-AA	424355								
	MK-AAA	324355	PC83.70 (35/35mm)	AAA-K1	1	6	MAIN BUILDING 83.70(35/35)THUMBTURN CYLINDER AAA-K1	311441	311341	[1][1][3][1][1][4]
	SMK-AAAA	313355	PC83.90 (45/45mm)	AAA-K2	1	6	MAIN BUILDING 83.90(45/45)THUMBTURN CYLINDER AAA-K2	311443	311343	[1][1][3][1][1][2]
	SMK-AAAB	331355	PC83.70 (35/35mm)	AAAA-K1	4	6	MAIN BUILDING 83.70(35/35)THUMBTURN CYLINDER AAAA-K1	313121	313121	[1][1][1][2][3][4]
			PC83.70 (35/35mm)	AAAA-K2	4	6	MAIN BUILDING 83.70(35/35)THUMBTURN CYLINDER AAAA-K2	313123	313123	[1][1][1][2][3][2]
			PC83.70 (35/35mm)	AAAA-K3	2	6	MAIN BUILDING 83.70(35/35)THUMBTURN CYLINDER AAAA-K3	313141	313141	[1][1][1][2][1][4]
			PC83.70 (35/35mm)	AAAA-K4	3	6	MAIN BUILDING 83.70(35/35)THUMBTURN CYLINDER AAAA-K4	313143	313143	[1][1][1][2][1][2]
			PC8 .70 (55/15mm)	AAAB-K1	3	6	MAIN BUILDING 83.70(55/15)THUMBTURN CYLINDER AAAB-K1	331212	321212	[1][1][3][1][4][3]
			P 83.70 (55/15mm)	AAAB-K2	2	6	MAIN BUILDING 83.70(55/15)THUMBTURN CYLINDER AAAB-K2	331214	321214	[1][1][3][1][4][1]
			P 83.70 (55/15mm)	AAAB-K3	2	6	MAIN BUILDING 83.70(55/15)THUMBTURN CYLINDER AAAB-K3	331232	321232	[1][1][3][1][2][3]

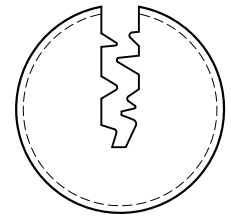


LK2

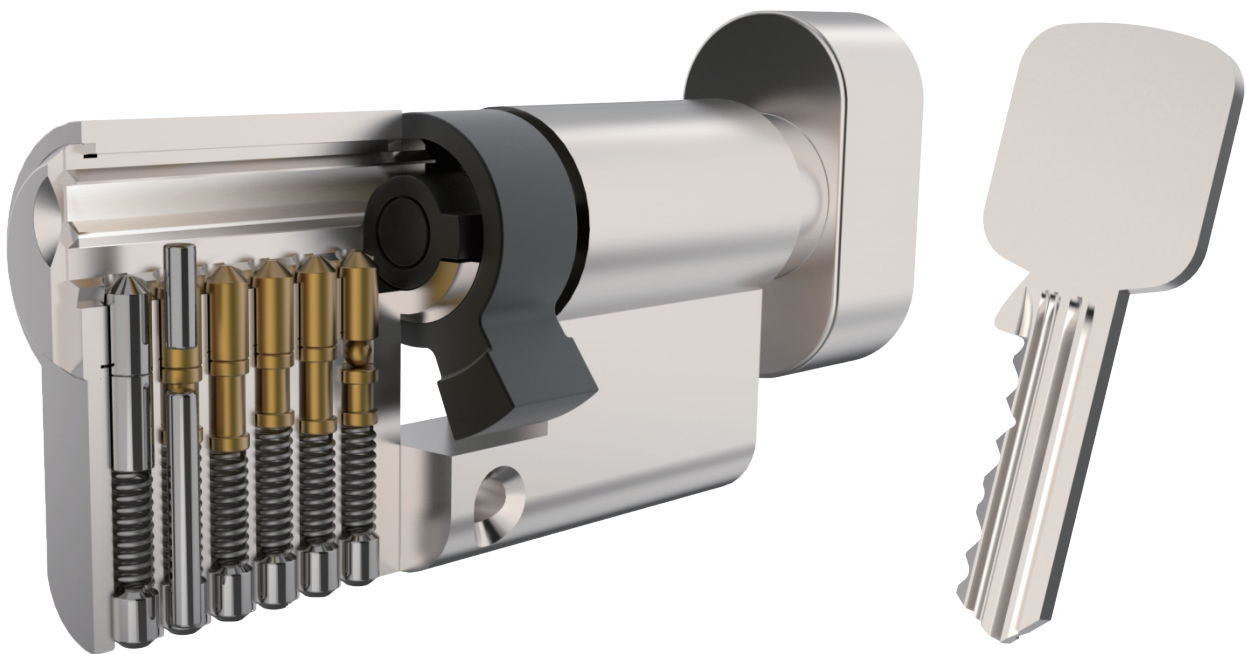
SPECIAL KEY PROFILE CYLINDER



ANTI PICK ANTI DRILL



Special key profile

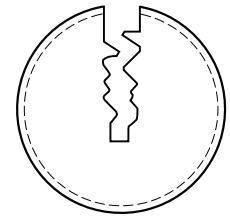


Special key profile cylinder

- Special key profile controls the duplication.
- Available for different finishes. Brass keys (Silver nickel keys optional).
- Anti picking key profile.

LK2-1

ANTI PICK RESTRICTED KEY PROFILE
CYLINDER WITH SIDE PINS



Anti pick keyway

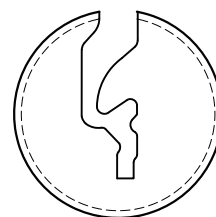


Anti pick restricted key profile cylinder with side pins

- Anti picking key profile.
- Restricted key profile with side pins to increase the security and convenience of small scale master key system.
- Anti drilling security features.
- Easy to do the key duplication in local market.

LK3

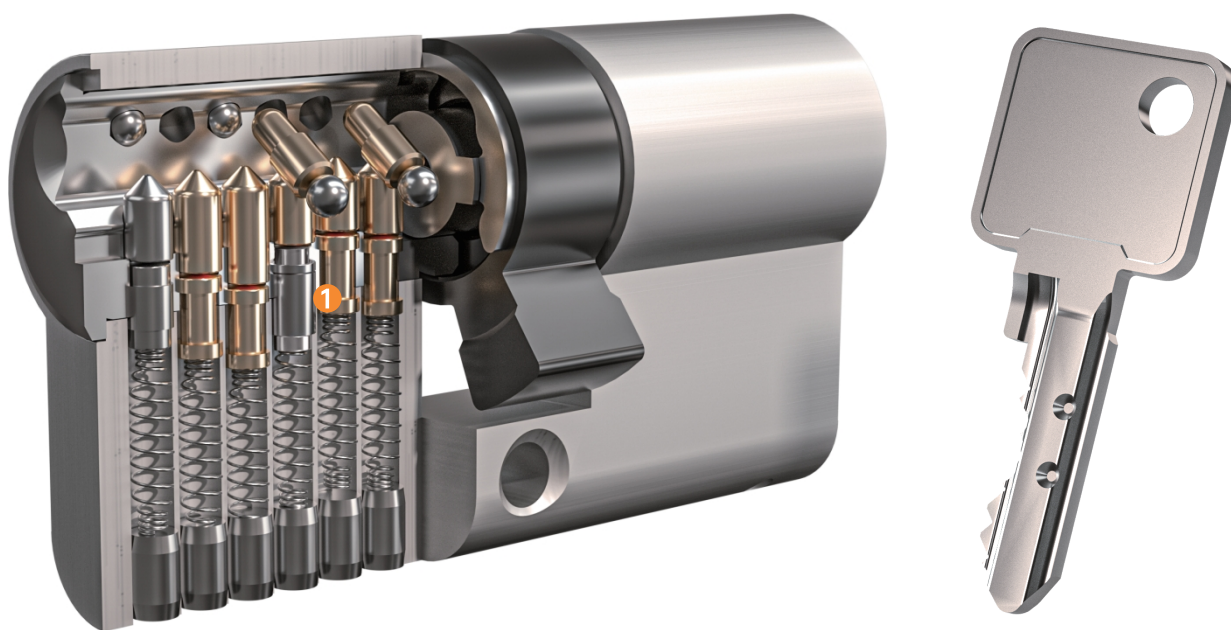
ANTI PICK RESTRICTED KEY PROFILE
CYLINDER WITH SIDE PINS



Anti pick keyway



ANTI PICK ANTI DRILL



Anti pick restricted key profile cylinder with side pins

- Anti bumping driver pins, high resistance to "bumping" or percussion. ¹
- Anti picking key profile.
- Side pins with angle for increasing the difficulty of picking, increase the key combination. and for anti wrong key insert, doing the small scale master key system fastly.
- The first pins and drivers in hardened steel.
- Easy to do the key duplication in local market.

LK4 SINGLE ROW DIMPLE KEY CYLINDER



ANTI PICK



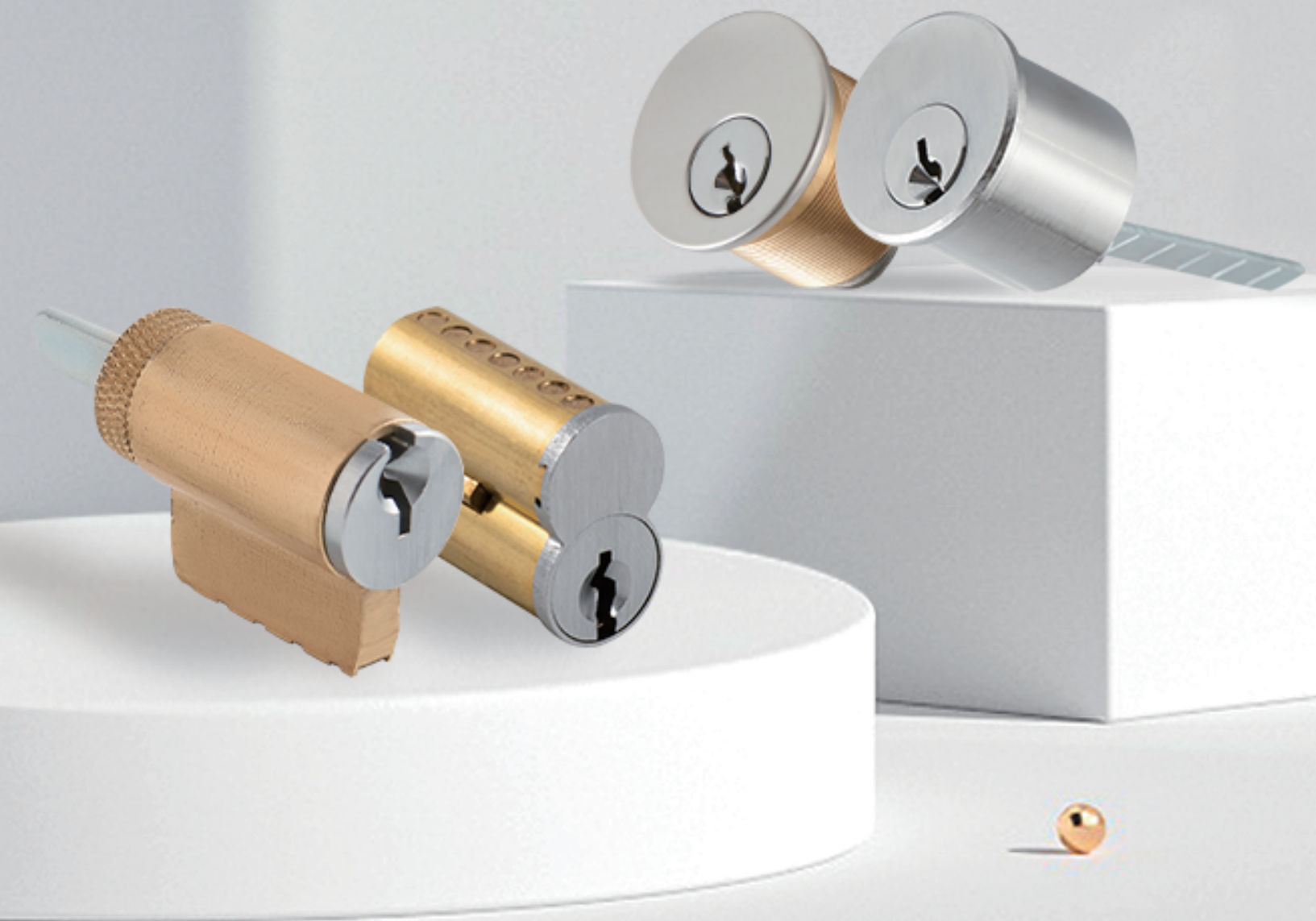
ANTI DRILL



Single row dimple key cylinder

- Standard 0.5mm increment for the bottom pin. (5 key numbers).
- 0.1-15mm gap between plug (rotor) and housing. Suitable for master key system.
- Available for different finishes. Brass keys.
- Optional plastic key head. Optional double-clutch function.

AMERICAN STANDARD LOCK CYLINDER



LK5 MORTISE CYLINDER



UL CAM ADAM -1



UL CAM YALE -2



UL CAM YALE -2A



UL CAM RUSS -3



UL CAM FLCN -4



UL CAM SCHL -7



UL CAM SGNT -8



Mortise cylinder

- Solid brass construction.
- Standard key pins #0 - #9.
- Suitable for American standard locksets.
- Available for different finishes and length (5 pins or 6 pins).
- Available for SC1 keyway, KW1 keyway and so on.
- Optional restricted keyway.

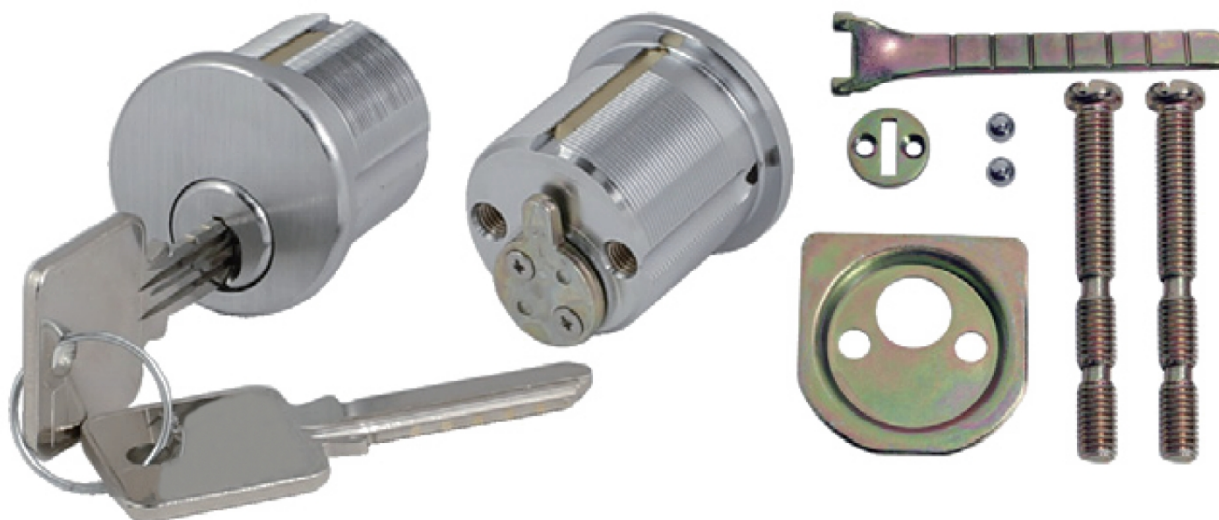
LK6

RIM CYLINDER

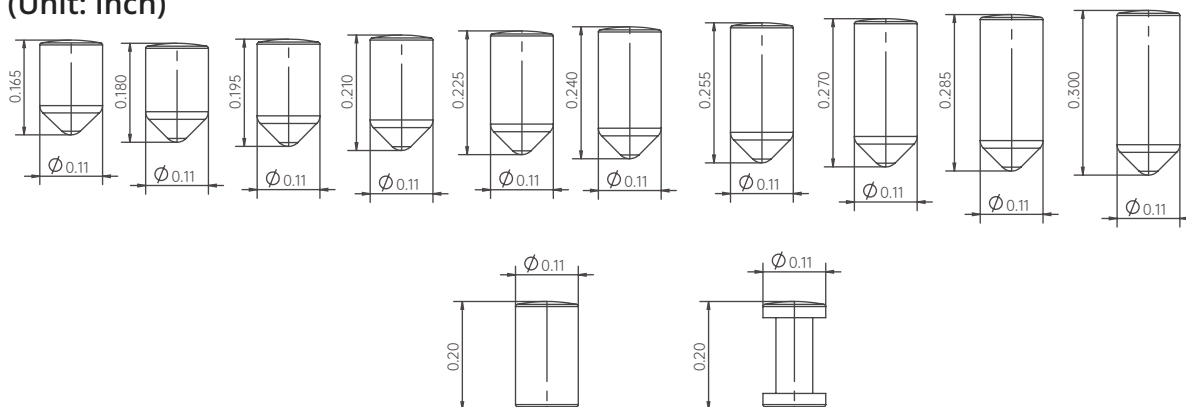


Rim Cylinder

- Solid brass construction.
- Standard key pins #0 - #9.
- Suitable for American standard locksets.
- Available for different finishes and length (5 pins or 6 pins).
- Available for SC1 keyway, KW1 keyway and so on.
- Optional restricted keyway.



(Unit: Inch)



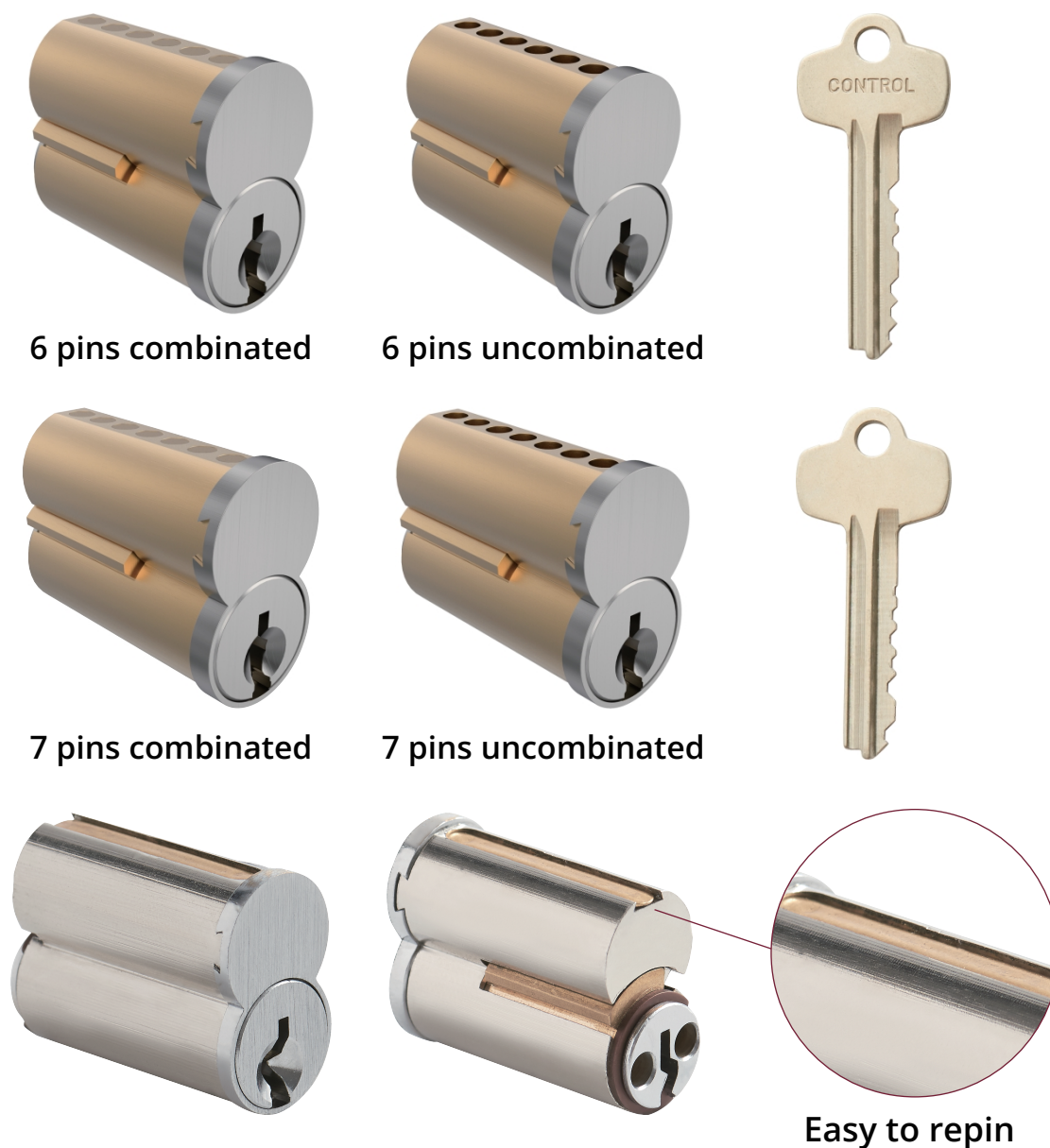
Rimo Cylinder

- Solid brass construction.
- Standard key pins #0 - #9.
- Suitable for American standard locksets.
- Available for different finishes and length (5 pins or 6 pins).
- Available for SC1 keyway, KW1 keyway and so on.
- Optional restricted keyway.



KIK Cylinder

- Solid brass construction.
- Standard key pins #0 - #9.
- Suitable for American standard locksets.
- Available for different finishes and length (5 pins or 6 pins).
- Available for SC1 keyway, KW1 keyway and so on.
- Optional restricted keyway.

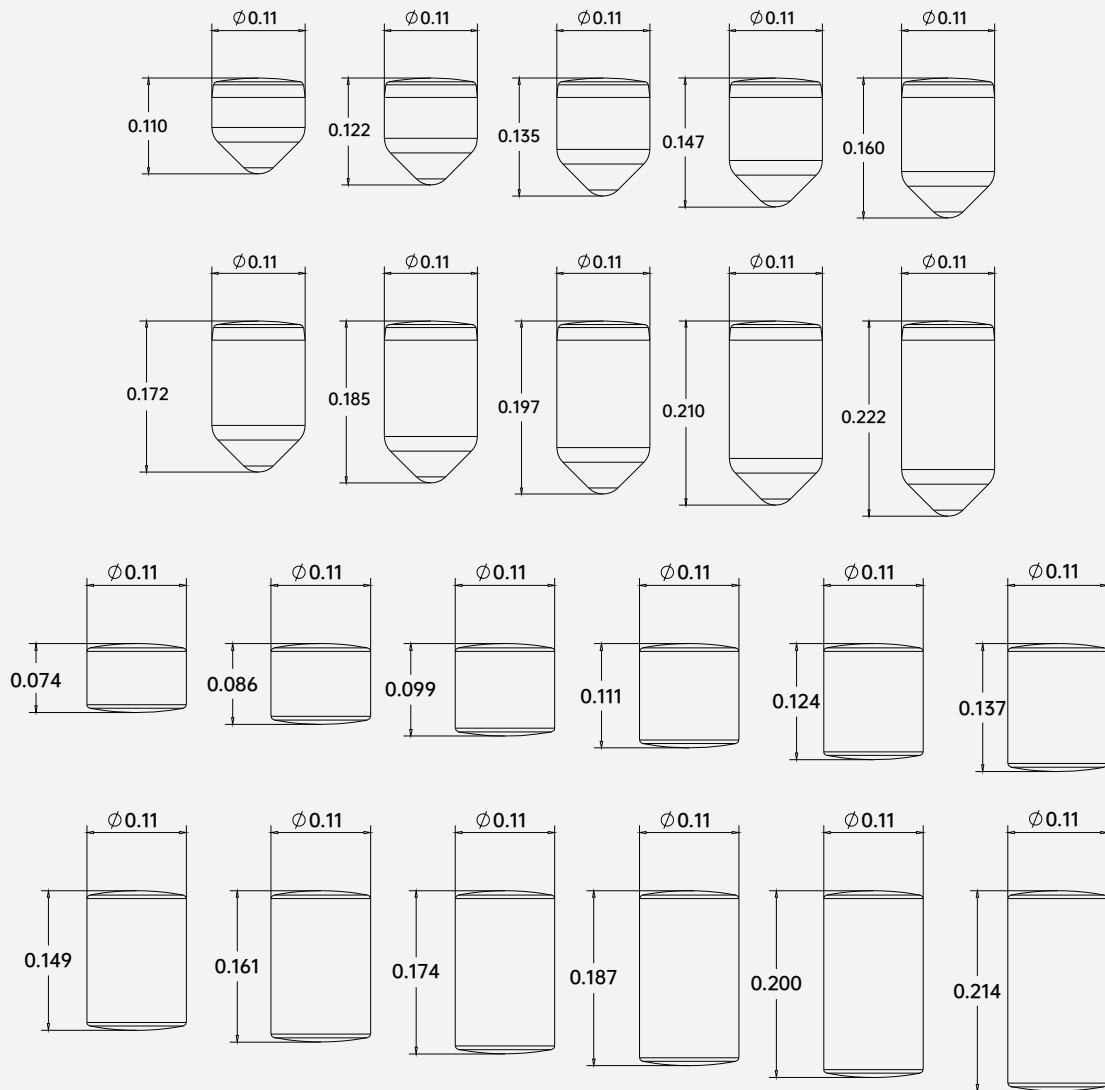


SFIC (small format interchangeable core)

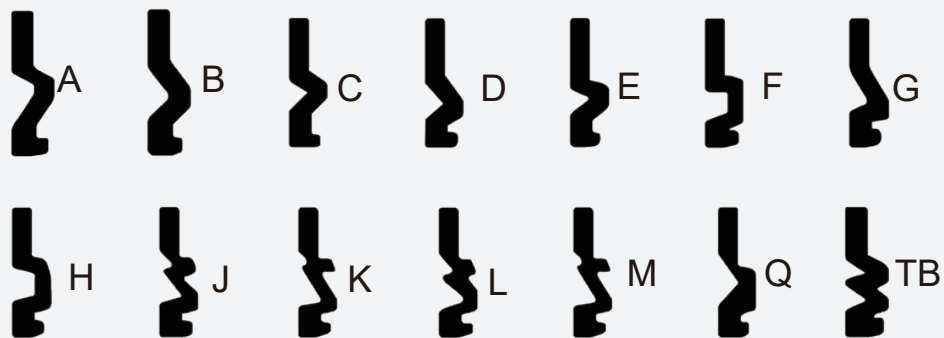
- Solid brass construction.
- Available in 6 or 7 pins.
- Available combined and uncombined.
- BEST A-2 System key pins.
- Key combination over 1,000,000.
- Suitable for American standard locksets.
- Suitable for doing master key system.

Key pins/ master key pins for SFIC

(Unit: Inch)



BEST Keyway



LK10

SFIC MORTISE HOUSING



UL CAM ADAM -1



UL CAM YALE -2



UL CAM YALE -2A



UL CAM RUSS -3



UL CAM FLCN -4



UL CAM SCHL -7

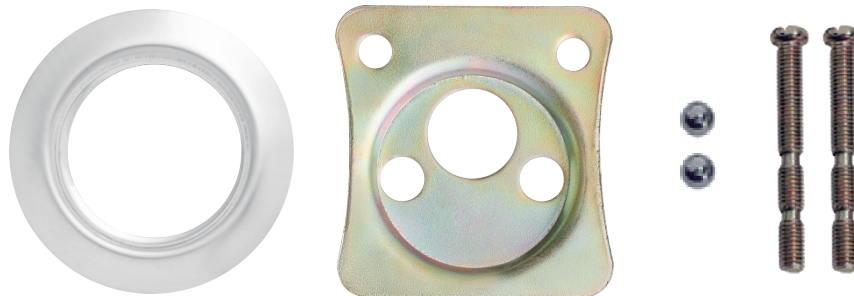
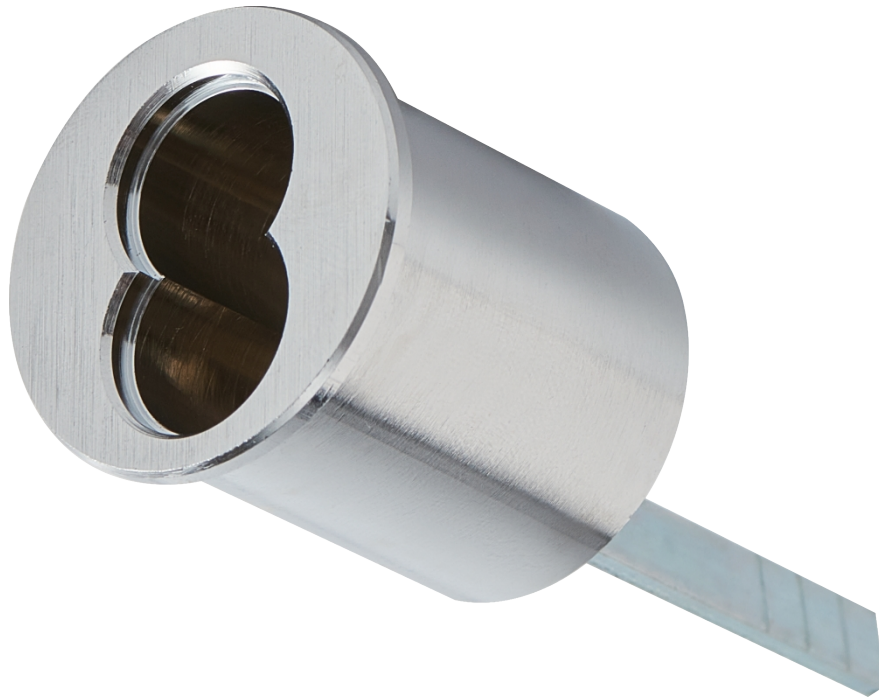


UL CAM SGNT -8



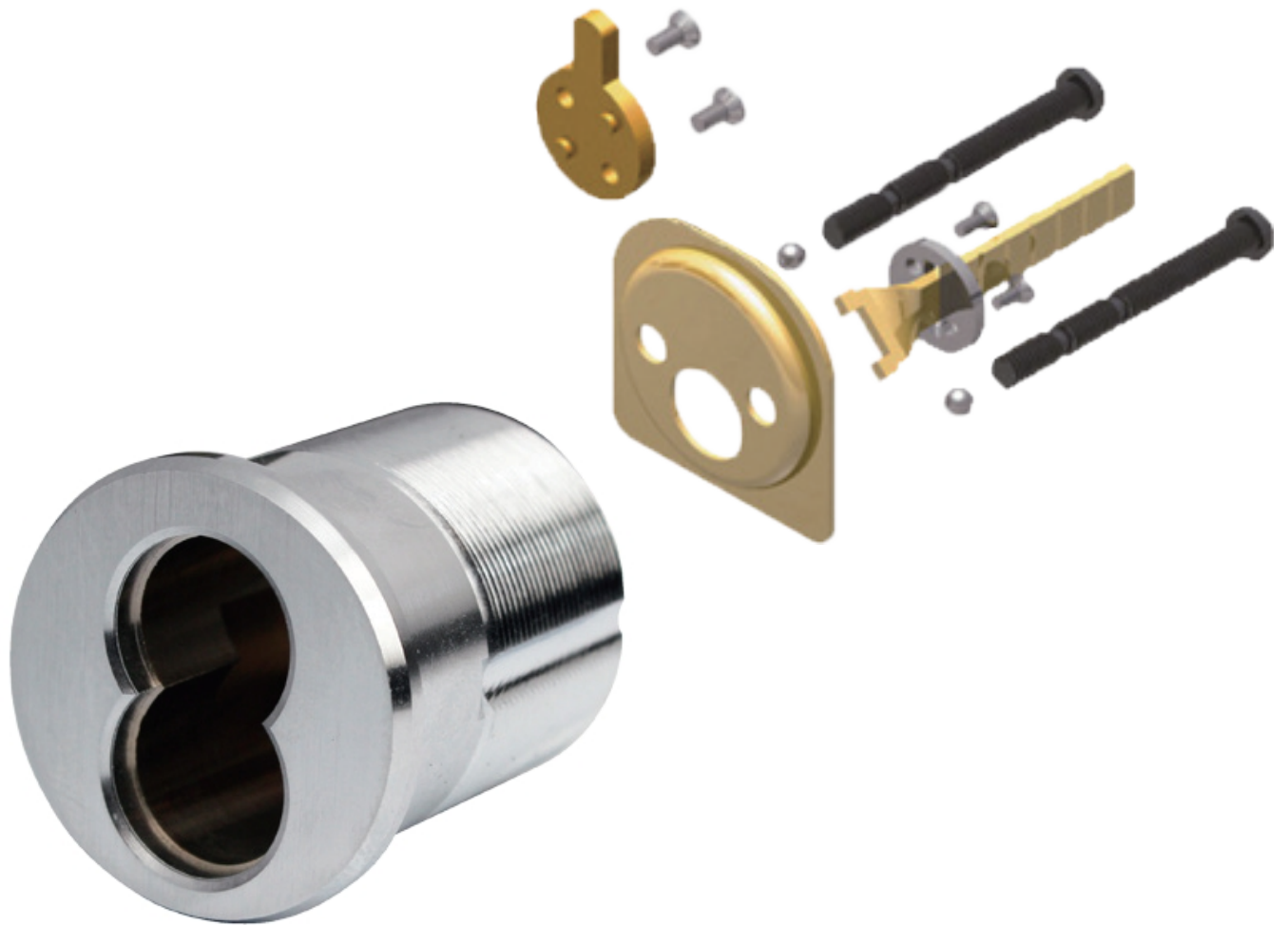
SFIC Mortise Housing

- Solid brass construction.
- Suitable for 6 or 7 pins SFIC.
- Available for different finishes and length.



SFIC Rim Housing

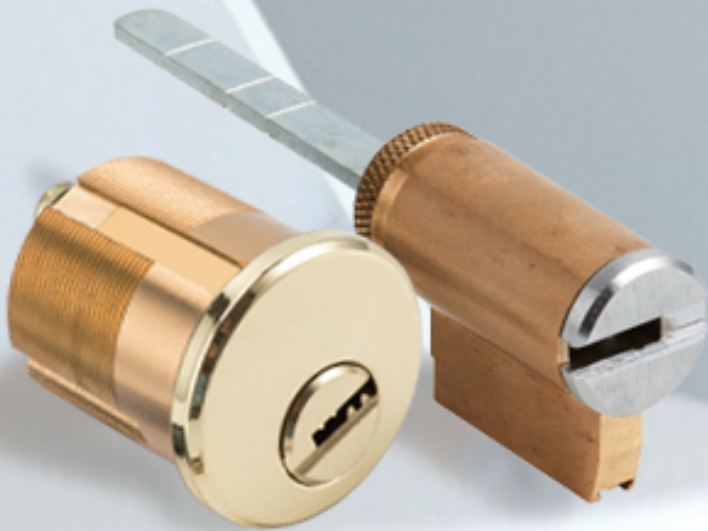
- Solid brass construction.
- Suitable for 6 or 7 pins SFIC.
- Available for different finishes and length.



RIMO SFIC HOUSING

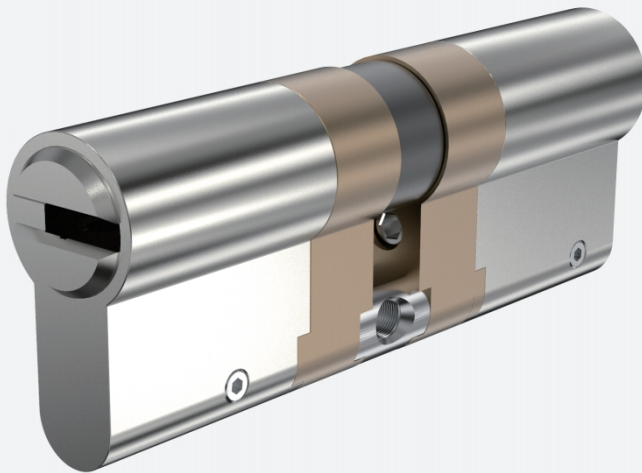
- Solid brass construction.
- Suitable for 6 or 7 pins SFIC.
- Available for different finishes and length.

HIGH SECURITY CYLINDERS



MODULAR EUROPEAN PROFILE CYLINDER

Basic length of 31/33mm can be extended on either side at 5mm、10mm、20mm adapters, using just a screw for onsite convenient modification.

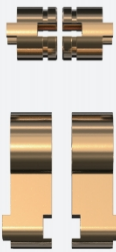


#206

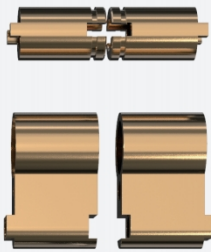
#266



5mm parts



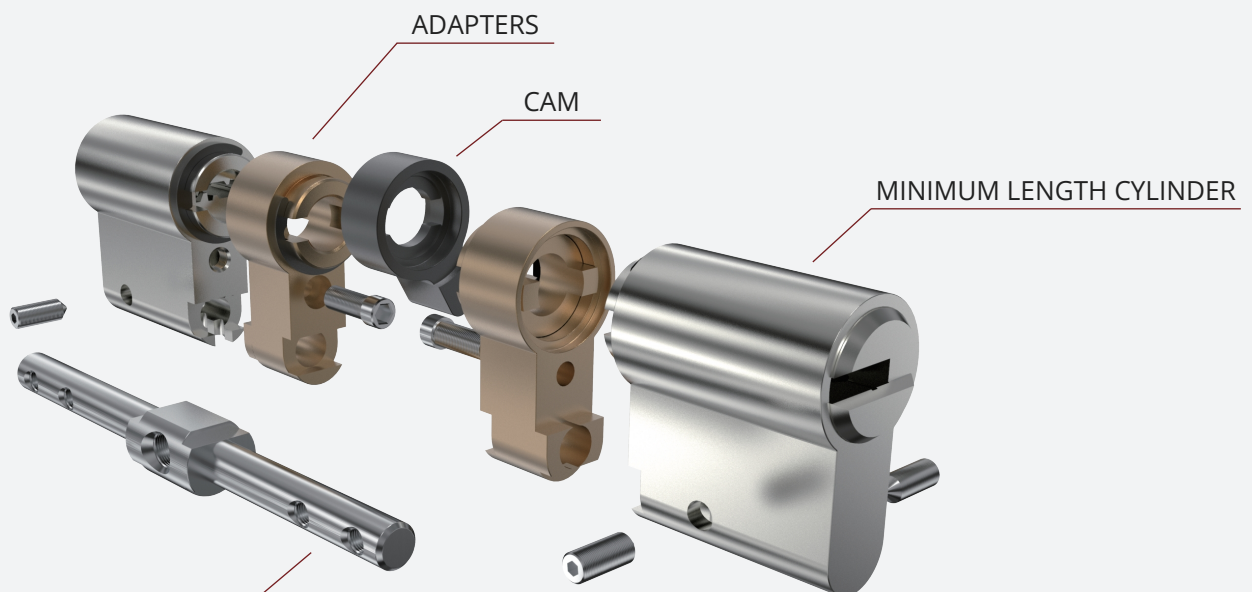
10mm parts



20mm parts



Different sizes of connecting bridges



CONNECTING BRIDGE

LK13

SINGLE ROW DIMPLE KEY CYLINDER



ANTI PICK



ANTI DRILL



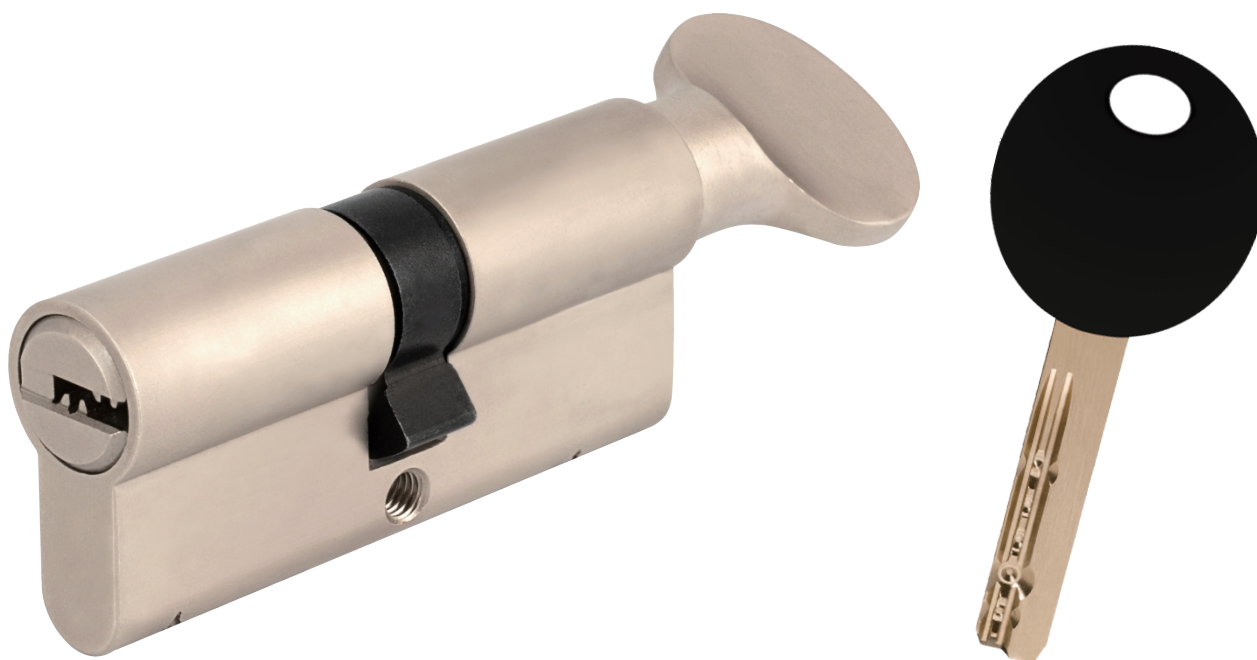
#06



#76

Single row dimple key cylinder

- Standard 0.4mm increment for the bottom pin #0 - #6. 7 pin holes.
- Standard 0.1- 0.15mm gap between rotor and housing.
- Suitable for doing master key system.
- Standard using #06, #76 key profile. Other key profiles are available.
- Available for different finishes. Plastic key head. Nickel silver keys.
- Optional double-entry function (emergency double cylinder).



Single row telescopic pins cylinder

- Using the telescopic pin specification.
- Standard 0.1- 0.15mm gap between rotor and housing.
- Suitable for doing master key system. Offering master pins (3 kinds).
- Standard using #06, #76 key profile. Other key profiles are available.
- Available for different finishes. Plastic key head. Nickel silver keys.
- Optional double-entry function.

LK15

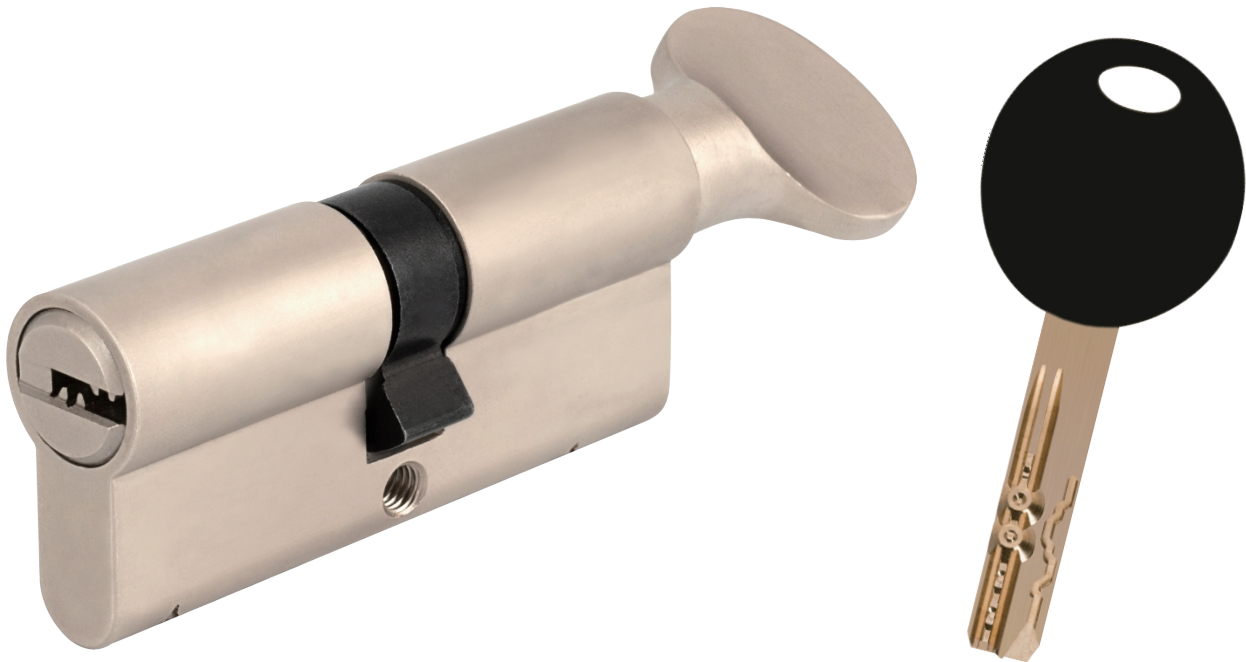
SINGLE ROW TELESCOPIC PINS CYLINDER



ANTI PICK



ANTI DRILL



Single row telescopic pins cylinder

- Using the telescopic pin specification.
- Standard 0.1 - 0.15mm gap between rotor and housing.
- Suitable for doing master key system. Offering master pins (3 kinds).
- 4 sliders are applied to increase the anti-bumping ability.
- Key blank with slider cut already.
- Standard using #06 key profile. Other key profiles are available.
- Available for different finishes. Plastic key head. Nickel silver keys.
- Optional double-entry function.

LK16

TELESCOPIC PINS CYLINDER WITH SINGLE MOBILE PINS



#206

#266



with sacrificial cut

Telescopic pins cylinder with single mobile pins

- Using the telescopic pin specification and mobile pin structure.
- Standard 0.1 - 0.15mm gap between rotor and housing.
- Suitable for doing master key system. Offering master pins (3 kinds).
- Key blanks with mobile pins assembled already.
- Standard using #206, #266 key profile. Other key profiles are available.
- Available for different finishes. Plastic key head. Nickel silver keys.
- Optional double-entry function.

LK16-1

TELESCOPIC PINS CYLINDER WITH SINGLE MOBILE PINS



Telescopic pins cylinder with single mobile pins

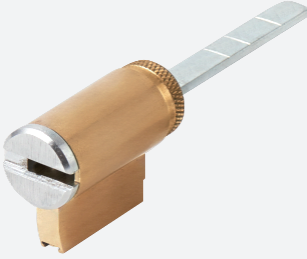


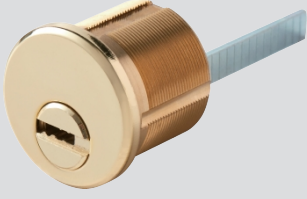
- Anti-snap bar placed at the housing. ¹
- 2 pieces anti-break bar placed at the housing. ²
- Using the telescopic pin specification and mobile pin structure.
- Standard 0.1 - 0.15mm gap between rotor and housing.
- Suitable for doing master key system. Offering master pins (3 kinds).
- Key blanks with mobile pins assembled already.
- Standard using #206, #266 key profile. Other key profiles are available.
- Available for different finishes. Plastic key head. Nickel silver keys.
- Optional double-entry function.



Telescopic pins cylinder with double mobile pins

- Double mobile pins increase the difficulty of technical opening.
- Using the same as Mul-T-Lock's Interactive model telescopic pin specification.
- Standard 0.1 - 0.15mm gap between rotor and housing.
- Suitable for doing master key system. Offering master pins (3 kinds).
- Key blanks with mobile pins assembled already.
- Standard using #206, #266 key profile. Other key profiles are available.
- Available for different finishes. Plastic key head. Nickel silver keys.
- Optional double-entry function.

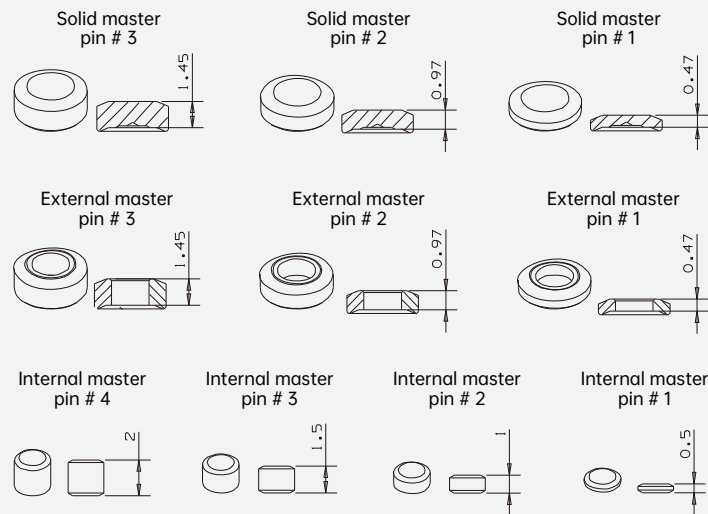
American Standard Cylinder with telescopic pin structure

Type of Housing	Picture	single row dimple key	telescopic pin	telescopic pins with single floating pin	Double floating pins
KIK		LK18	LK19	LK20	LK48
Mortise		LK21	LK22	LK23	LK49
Rim		LK24	LK25	LK26	LK50
RIMO		LK27	LK28	LK29	LK51

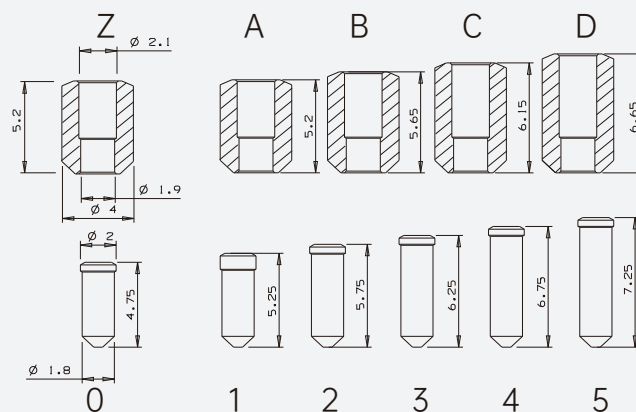
Telescopic Cylinder Systems Components



Master Pins (Unit: MM)



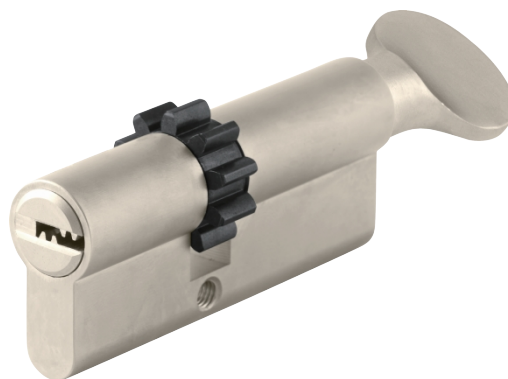
Telescopic key pins (Unit: MM)



Different Accessories for Different Functions



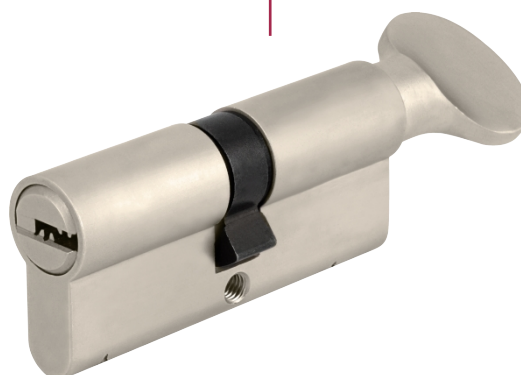
Double Cylinder
with Gear Cam



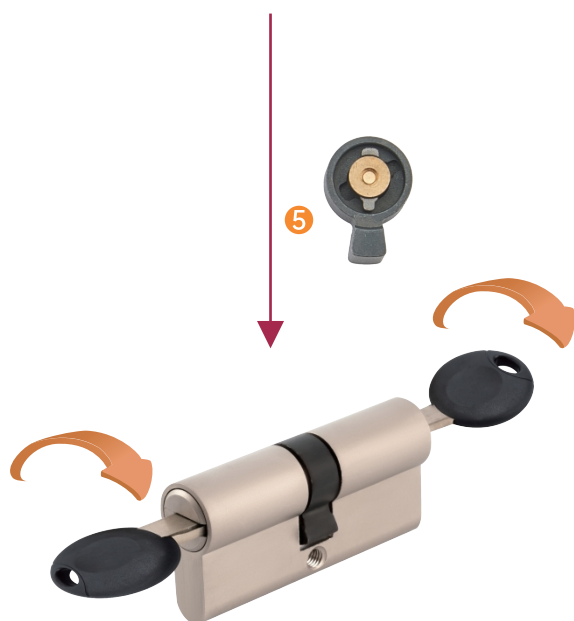
Thumbturn Cylinder
with Gear Cam



Double Cylinder
with Normal Double Open Cam



Thumbturn Cylinder
with Single Open Cam



Emergency Lock Cylinder
Double-Clutch Function

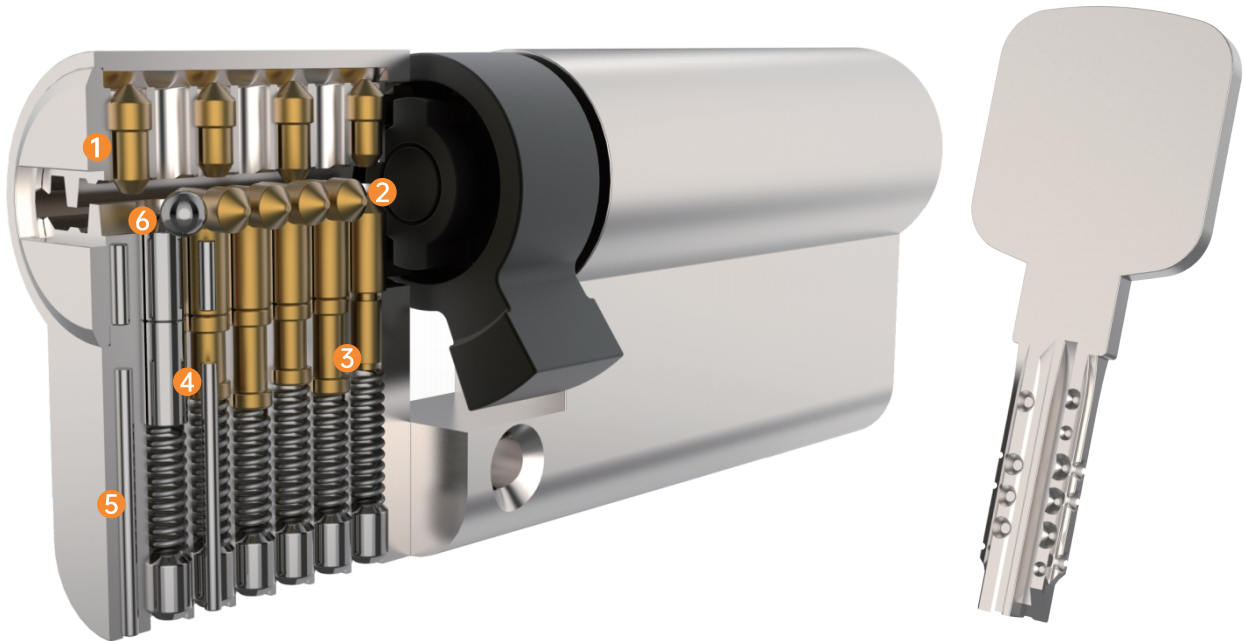
- ① thumbturn single open normal cam
- ② thumbturn clutch
- ③ thumbturn + thumbturn plug
- ④ 10-tooth gear cam
- ⑤ emergency double clutch
- ⑥ double open normal cam
- ⑦ double open normal clutch

ACTIVE PINS CYLINDER WITH PASSIVE PINS



LK30

ACTIVE PINS, PASSIVE PINS AND SIDE PINS CYLINDER
WITH ENHANCED ANTI-DRILLING ABILITY



Active pins, passive pins and side pins cylinder with enhanced **anti-drilling** ability

- Standard 0.5mm increment for the bottom pin (5 key number).
- Standard 0.1 - 0.15mm gap between rotor and housing.
- 7 optional passive pin holes. 4 actual passive pins dimple cut. Passive pins have 2 steps. ¹
- 5 optional side pin holes and 3 actual side pins dimple cut. ²
- Anti-bumping driver pin offers the anti-bumping ability. ³
- First bottom pin and driver pin are made of harden steel. ⁴
- 3 anti-drilling pins placed at the housing and rotor. ⁵
- 1 anti-drill steel balls placed at the rotor prevents the side drilling. ⁶
- Suitable for doing family master key system.
- Available for different finishes. Brass keys. Optional plastic key head.
- Optional double-entry function.



ANTI PICK ANTI DRILL ANTI SNAP



Active pins and passive pins cylinder with enhanced **anti-breaking** ability

- Standard 0.5mm increment for the bottom pin (5 key number).
- Standard 0.1 - 0.15mm gap between rotor and housing.
- 7 optional passive pin holes. 4 actual passive pins dimple cut. ¹
- Anti-bumping driver pin offers the anti-bumping ability. ²
- First bottom pin and driver pin are made of harden steel. ³
- 1 anti-drilling pins placed at the housing. ⁴
- 1 anti-drill steel balls placed at the rotor prevents the side drilling. ⁵
- Suitable for doing family master key system.
- Available for different finishes. Brass keys. Optional plastic key head.
- Optional double-entry function.

LK32

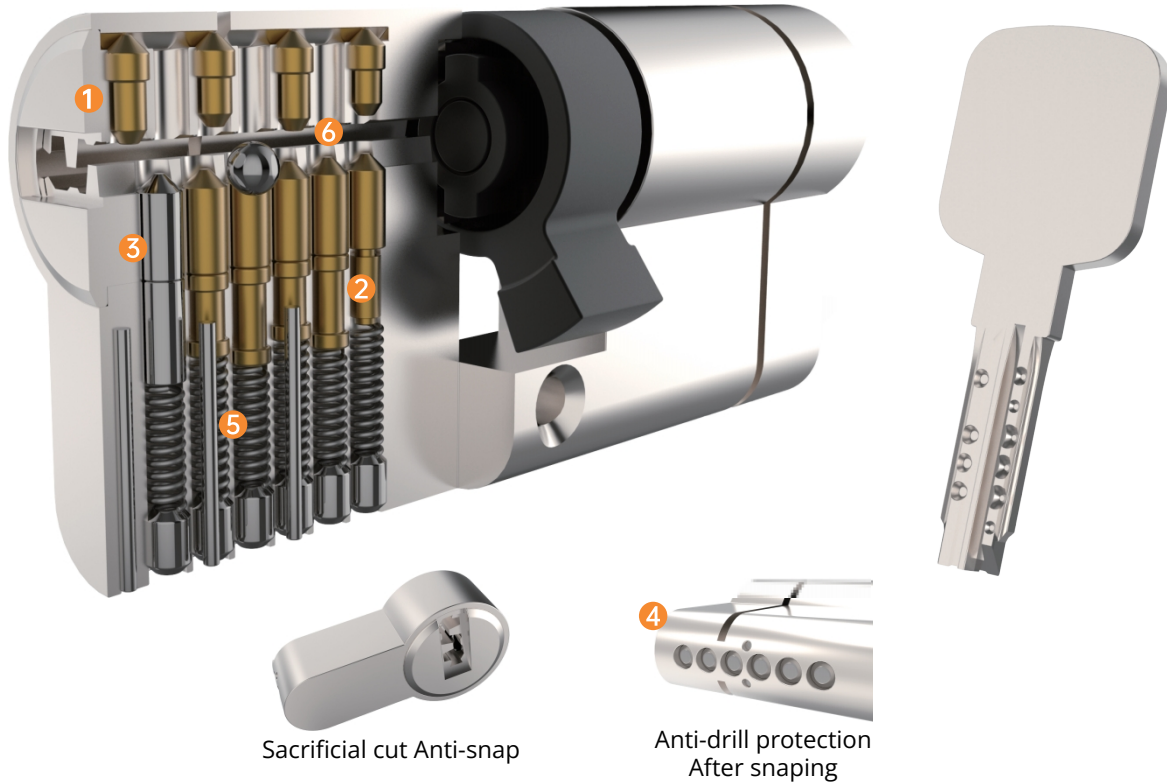
ACTIVE PINS AND PASSIVE PINS CYLINDER WITH
SACRIFICIAL ANTI-SNAP CUT



ANTI PICK



ANTI DRILL



Active pins and passive pins cylinder with sacrificial **anti-snap** cut

- Standard 0.5mm increment for the bottom pin (5 key number).
- Standard 0.1 - 0.15mm gap between rotor and housing.
- 7 optional passive pin holes. 4 actual passive pins dimple cut. ¹
- Anti-bumping driver pin offers the anti-bumping ability. ²
- First bottom pin and driver pin are made of harden steel. ³
- 5 anti-drilling pins placed at the housing. ⁴
- 2 anti-drilling pins placed at the rotor. ⁵
- 1 anti-drill steel balls placed at the rotor prevents the side drilling. ⁶
- Suitable for making master key system.
- Available for different finishes. Brass keys. Optional plastic key head.
- Optional double-entry function.

LK33

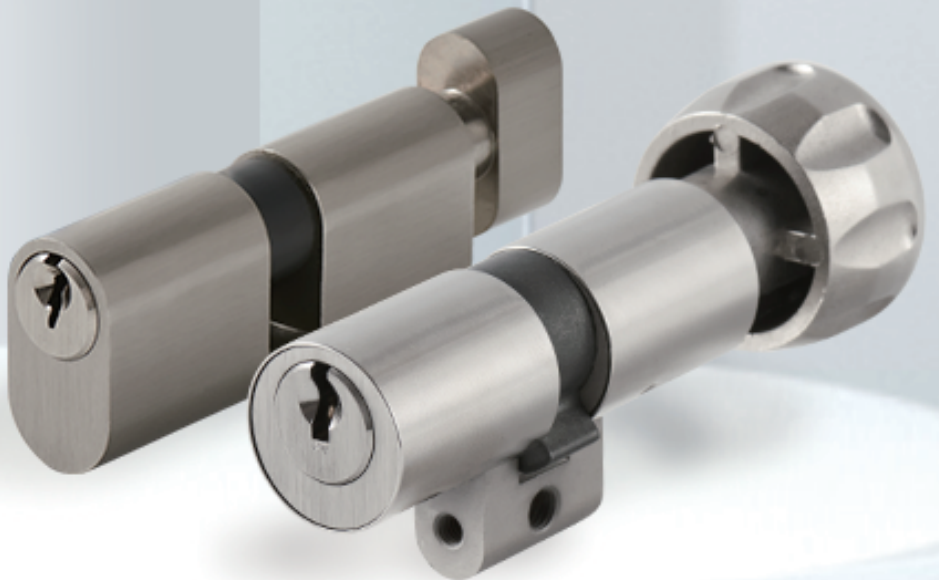
ACTIVE PINS AND PASSIVE PINS CYLINDER WITH
ENHANCED ANTI-BUMPING ABILITY



Active pins and passive pins cylinder with enhanced **anti-bumping** ability

- Standard 0.5mm increment for the bottom pin (5 key number).
- Standard 0.1 - 0.15mm gap between rotor and housing.
- 7 optional passive pin holes. 4 actual passive pins dimple cut.
- Anti-bumping driver pin offers the anti-bumping ability. ¹
- First bottom pin and driver pin are made of harden steel.
- 6 anti-drilling pins placed at the housing.
- 2 pieces anti-break bar placed at the housing. ²
- Anti-snap bar placed at the housing. ³
- Suitable for making master key system.
- Available for different finishes. Brass keys. Optional plastic key head.
- Optional double-entry function.

OTHER PRODUCTS



LK46

SCANDINAVIAN ROUND LOCK CYLINDER WITH
7 PINS (EXTERNAL)



ANTI PICK



ANTI DRILL



With Stainless Steel Trim

Scandinavian round lock cylinder with 7 pins (external)

- Same ASSA ABLOY TrioVing key profile and key cutting.
- Optional protected key profile and security card.
- Standard cylinder for the module series.
- Anti pick driver pins and anti drilling pins on the plug and housing.
- 3 Brass or silver nickel key.
- Optional Allen screw seal pin. ¹

LK47

SCANDINAVIAN ROUND LOCK CYLINDER WITH
7 PINS (INTERNAL)



ANTI PICK



ANTI DRILL



Scandinavian round lock cylinder with 7 pins (internal)

- Same ASSA ABLOY TrioVing key profile and key cutting.
- Optional protected key profile and security card.
- Standard cylinder for the module series.
- Anti pick driver pins and anti drilling pins on the plug and housing.
- 3 Brass or silver nickel key.
- Optional Allen screw seal pin. ¹

LK34

SCANDINAVIAN OVAL LOCK CYLINDER WITH 7 PINS



ANTI PICK ANTI DRILL



Scandinavian oval lock cylinder with 7 pins

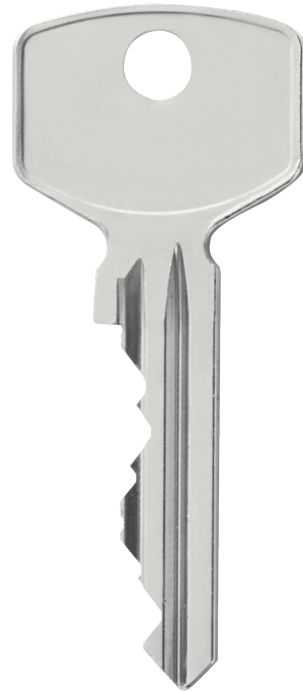
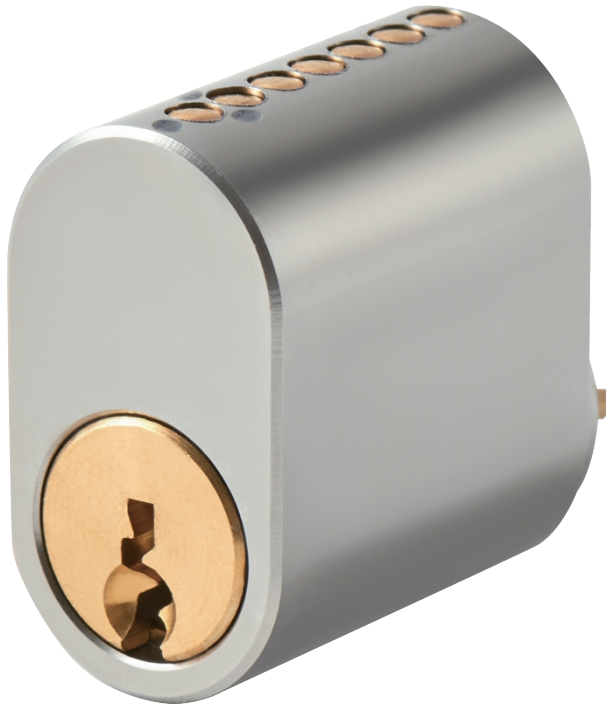
- Same ASSA ABLOY TrioVing key profile and key cutting.
- Optional protected key profile and security card.
- Standard cylinder for the module series.
- Anti pick driver pins and anti drilling pins on the plug and housing.
- 3 Brass or silver nickel key.
- Optional Allen screw seal pin. ¹

LK35

SCANDINAVIAN OVAL LOCK CYLINDER WITH 7 PINS



ANTI PICK ANTI DRILL



1



Scandinavian oval lock cylinder with 7 pins

- Same ASSA ABLOY TrioVing key profile and key cutting.
- Optional protected key profile and security card.
- Standard cylinder for the module series.
- Anti pick driver pins and anti drilling pins on the plug and housing.
- 3 Brass or silver nickel key.
- Optional Allen screw seal pin. ¹

LK36

SCANDINAVIAN OVAL CYLINDER WITH SLEEVE RING



ANTI PICK ANTI DRILL



Scandinavian oval cylinder with sleeve ring

- Same ASSA ABLOY TrioVing key profile, key cutting and sleeve ring.
- Optional protected key profile and security card.
- Standard cylinder for the module series.
- Anti pick driver pins and anti drilling pins on the plug and housing.
- Brass or silver nickel key.
- Optional Allen screw seal pin. ¹

LK37

SCANDINAVIAN OVAL CYLINDER EXTENSION PIECE

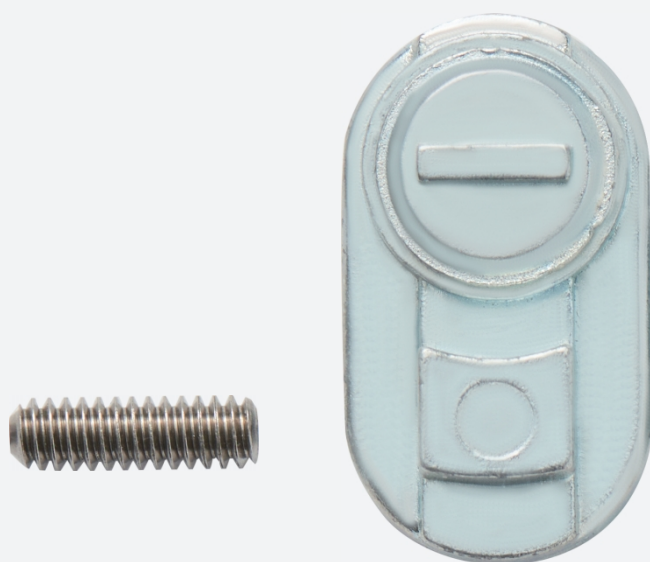


Scandinavian oval cylinder extension piece

- Length: 8mm, 10mm, 15mm

LK38

SCANDINAVIAN OVAL CYLINDER EXTENSION PIECE



Scandinavian oval cylinder extension piece

- Length: 10mm, 15mm

LK39

SCANDINAVIAN THUMBTURN CYLINDER (EXTERNAL)



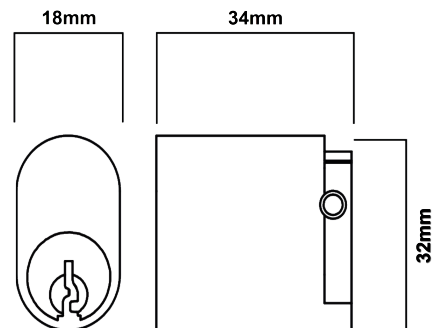
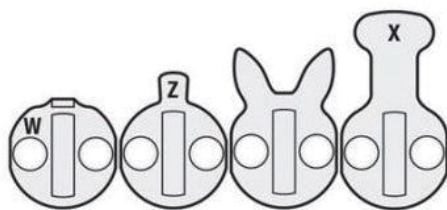
LK40

SCANDINAVIAN OVAL THUMBTURN CYLINDER (INTERNAL)



LK41

AUSTRALIAN OVAL CYLINDER



Australian oval cylinder

- C4 key profile, restricted keyway is optional.
- Optional Satin nickel, Satin chrome or black finish.
- Optional allen screw seal pin for repin or conseal seal pin.
- Construction key and master key systems are available upon request.
- Supplied with the 4 most common cams.

LK42

SCREEN DOOR CYLINDER

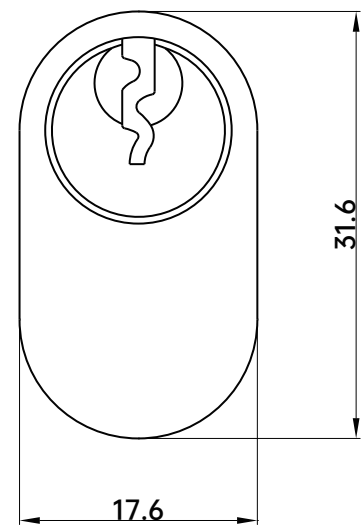
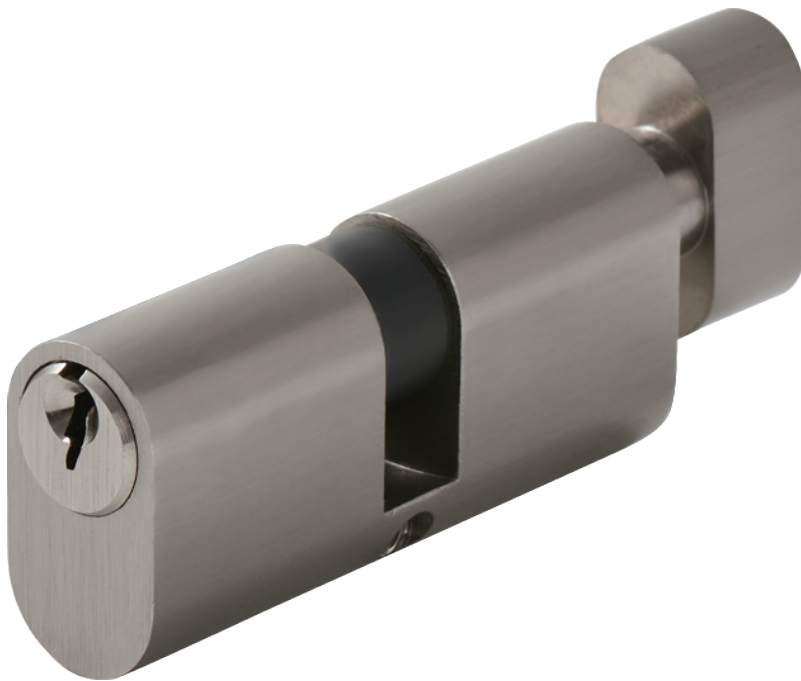


Screen door cylinder

- Suits most hinged and sliding security door locks.
- Lazy cam.
- Brass barrel and zinc body construction.
- 2 brass keys.
- Polished chrome finish.
- 62.5mm length.
- Removal cap for easy rekeying.

LK43

OVAL PROFILE CYLINDER

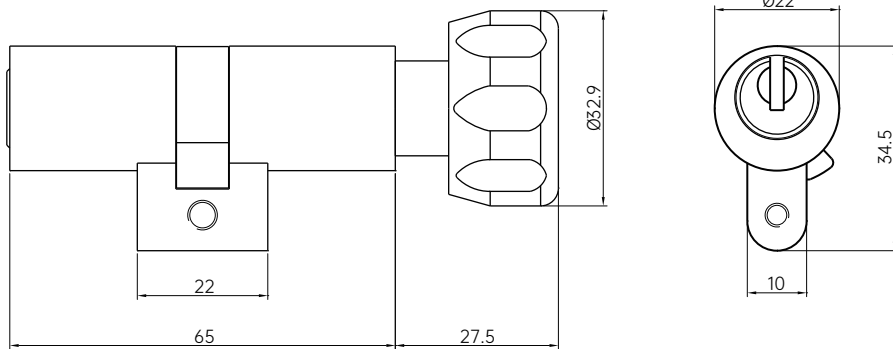


Oval profile cylinder

- Customized different length.
- 0.13mm gap between plug (rotor) and housing. Suitable for master key system.
- Available for different finishes. Brass keys.
- Mostly used key profile: Yale.

LK44

DOUBLE ROW 8 PINS SWISS PROFILE CYLINDER

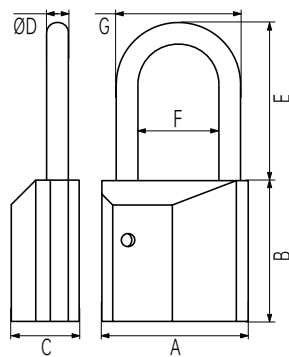


Double row 8 pins Swiss profile cylinder

- Standard double row 8 pins dimple key cylinder.
- Available for different finishes. brass keys.
- Available for different types: double open (key-key), single open (key-thumbturn), half open.

LK45

EUROPEAN PROFILE CYLINDER PADLOCK



A	B	C	ØD	E	F	G
54	52	25	8	30	30	46

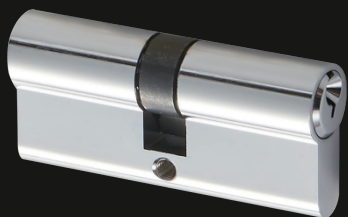
European profile cylinder padlock

- 30+10 european profily cylinder.
- Solid brass material.
- Nickel plated finish.
- Anti sawing hook is made of stainless steel material.

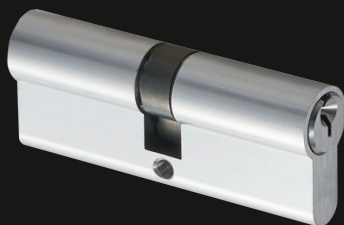
OTHER FUNCTIONS



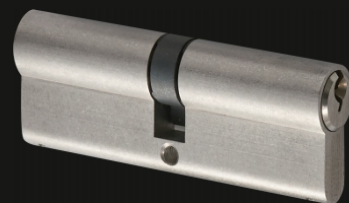
AVAILABLE FINISHES



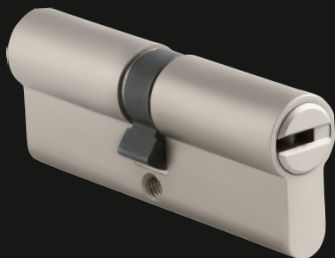
PC



SC



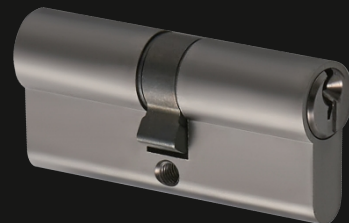
VN (Vibrated)



PN



SN



SBN



PB



SB



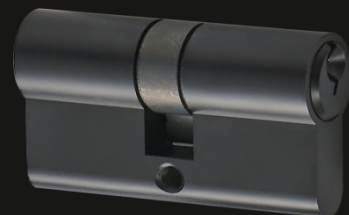
PVD



PG



AB



BLK

AVAILABLE PLASTIC KEY HEAD IDEAS

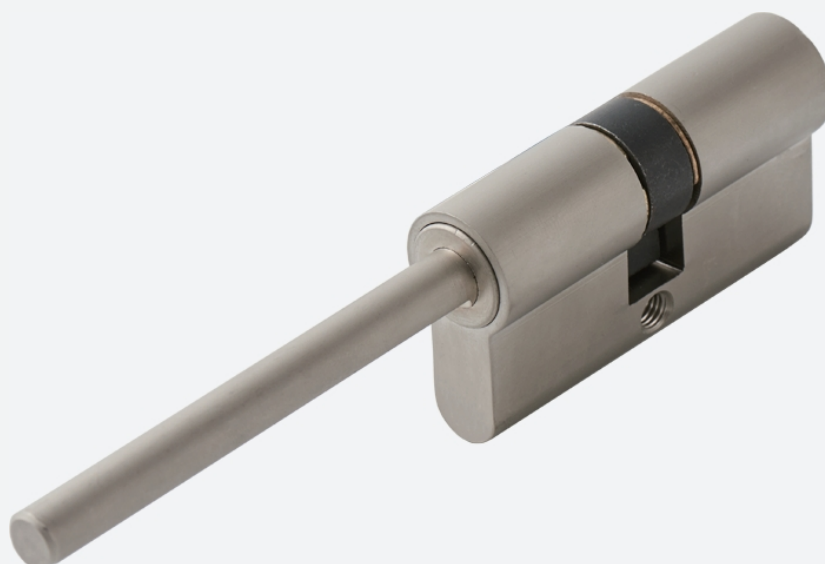


AVAILABLE FUNCTIONS



Emergency Lock Cylinder

Double-Clutch Function



Shaft cylinder

When the key turns, the shaft doesn't turn. Optional different length of shaft

AVAILABLE FUNCTIONS



Registration card

Key code

Please fill in this registration card with the number engraved on your key, keep it somewhere safe. Upon presentation of the filled in card, you will be supplied with an additional key.

Registration card

Key code

Please fill in this registration card with the number engraved on your key, keep it somewhere safe. Upon presentation of the filled in card, you will be supplied with an additional key.

Registration card

Key code

Please fill in this registration card with the number engraved on your key, keep it somewhere safe. Upon presentation of the filled in card, you will be supplied with an additional key.

Registration card

Key code

Please fill in this registration card with the number engraved on your key, keep it somewhere safe. Upon presentation of the filled in card, you will be supplied with an additional key.

Registration card

Key code

Please fill in this registration card with the number engraved on your key, keep it somewhere safe. Upon presentation of the filled in card, you will be supplied with an additional key.

- Rim cylinder and mortise cylinder are available by changing the cam or tailpiece.
- Keys are with side pins to enlarge key combinations.
- Maximum 5-in-1 function.
- Using the telescopic pin specification and mobile pin structure.
- Standard 0.1 - 0.15mm gap between rotor and housing.
- Suitable for doing master key system. Offering master pins (3 kinds).
- Key blanks with mobile pins assembled already.
- Standard using #206, #266 key profile. Other key profiles are available.
- Available for different finishes. Plastic key head. Nickel silver keys.
- Optional different cams.



EOS SECURE
Never Compromise on Security

Zhongshan City EOS Secure Products Co., Ltd

Add: No.6 Zhifu Road, Xiaolan Town,
Zhongshan City, Guangdong Province, China

Contact: Winny Leung

Mobile: +86-13420436003

Email: winny@eos-secure.com

Website: www.eos-secure.com

