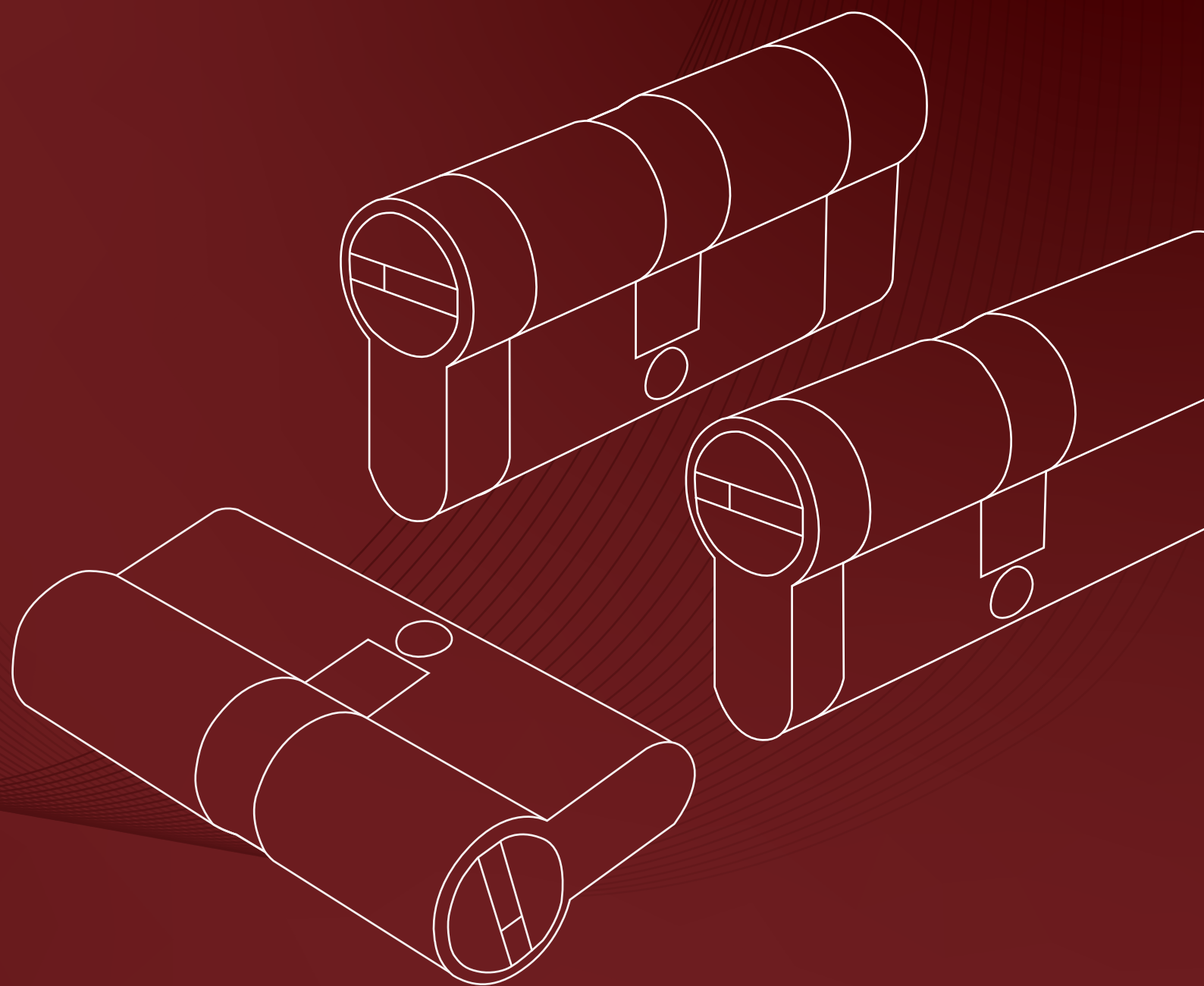


EOS SECURE

EOS SECURE 2023 CATALOGUE

Patent Security Lock Cylinders
Locking System Lock Cylinders
MANUFACTURER



Company: Zhongshan City EOS Secure Products Co., Ltd.

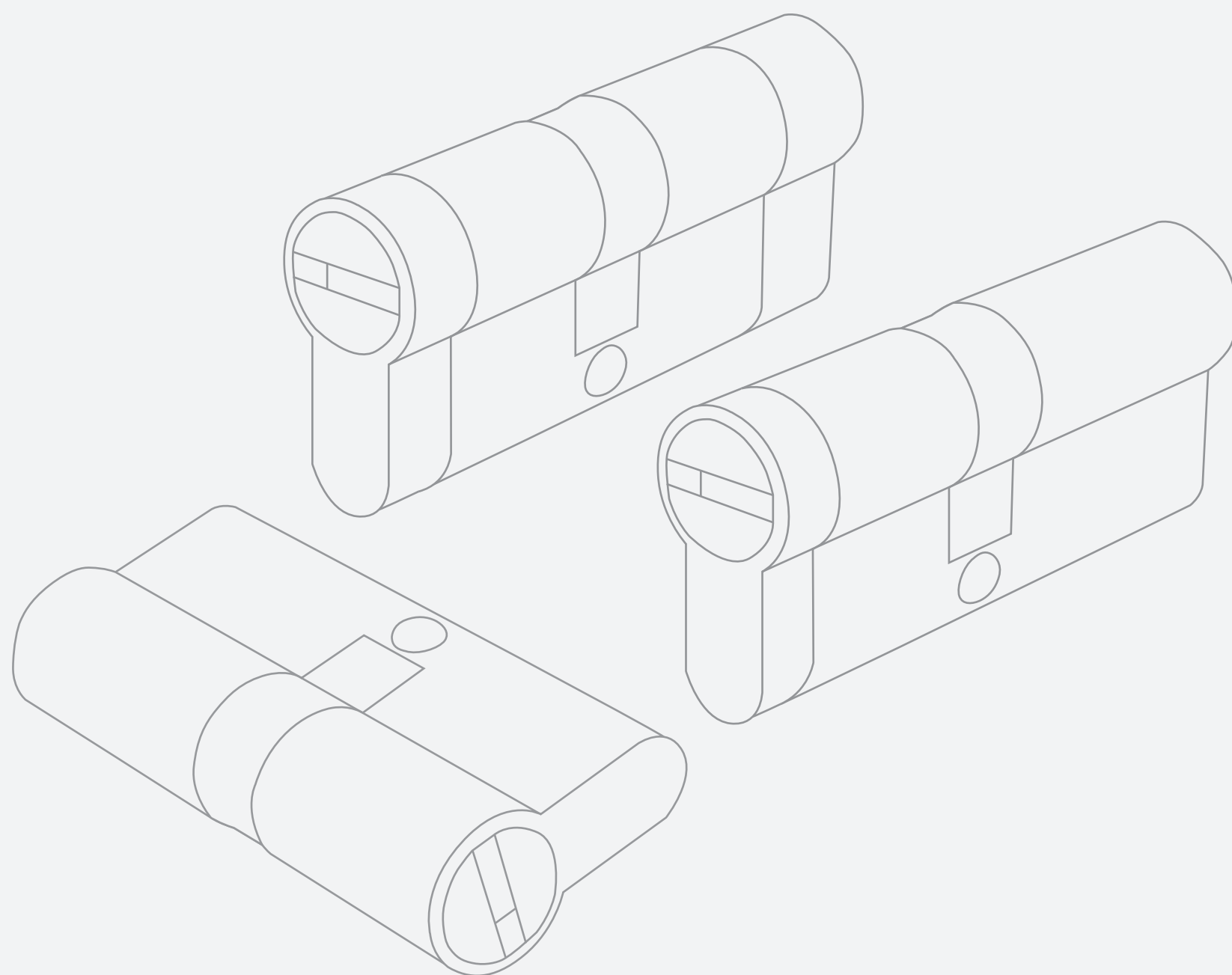
Email: winny@eos-secure.com

Mobile: +86 -13420436003

Add: No.29 Ronghua South Road, Xiaolan Town,
Zhongshan City, Guangdong Province, China



www.eos-secure.com



CATALOG

3	About EOS Secure
4	Production Line
8	Experienced R&D Team To Design What You Want
9	How EOS Controls The Quality
10	Patent Lock Cylinders
17	High Security Cylinders
29	American Standard Lock Cylinders
36	Normal Key Cylinders
41	Other Cylinders
49	Other Functions

ABOUT EOS SECURE

EOS has been the leading manufacturer of mechanical lock cylinders since 2011. We mainly focus on the precision and security of the lock cylinders. By investing in high-end CNC machines and quality testing machines, cultivating highly-skilled engineers, we are the only choice for you in high-precision lock cylinders in China. Our cylinder products are widely promoted by door manufacturers, locksmiths, DIY hardware shops, architectural companies, traditional hardware dealers, etc. With over 10 years of industrial experience, we are a professional manufacturer that understands our clients very well. We mainly export the lock cylinders to Europe, North America, South East Asia, South America, Middle East Area, etc. Welcome OEM/ODM customers and customers who want to be our Agents.



Precision-Oriented Lock Cylinder
Modern Plant



Matured Master Key System
Cylinder Experience



Precision Lock Cylinder
Manufacturing



Fulfilled Lock Cylinder
Customization



SOP-Based Lock Cylinder
Quality Management



Full After-Sales
Service

2011

Years We Started

50 +

Precision Machines

7000 +

Square Meters Production Base

150 +

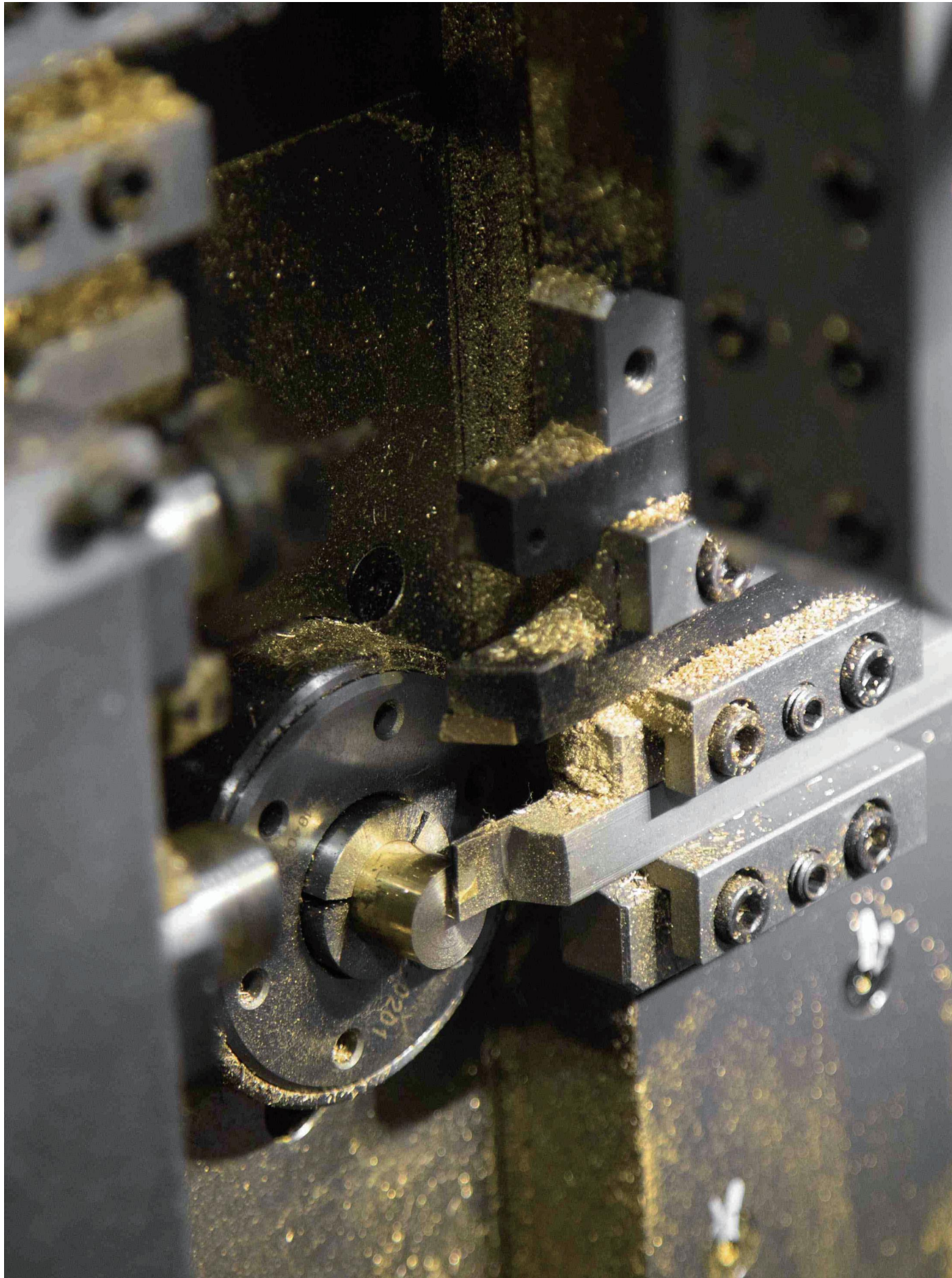
Employees

400000 +

Pcs Monthly

50 +

Exported Countries



Featured CNC Machines

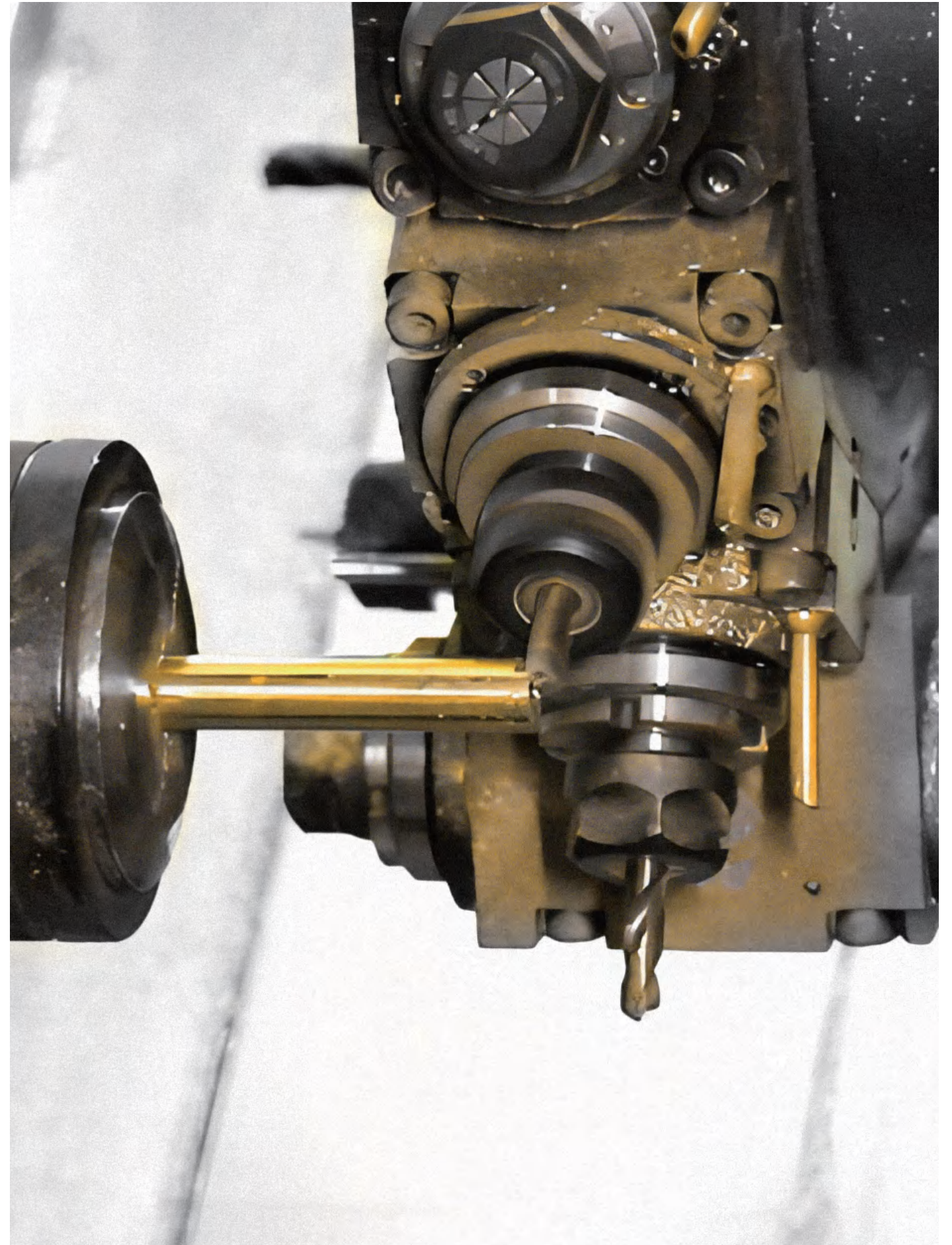
TSUGAMI CNC SWISS-TYPE AUTOMATIC LATHE MACHINES

- Controlling the machining tolerance within 0.01mm.
- Produce high precision and complicated products.
- Quick response sampling service.
- Quick mass production machining speed.
- Low MOQ requirement.

Featured CNC Machines

CNC LATHING-TURNING -MILLING-DRILLING MACHINES

- Controlling the machining tolerance within 0.02mm.
- Customize high precision complicated lock cylinders.
- Quick response sampling service.
- Low MOQ requirement.

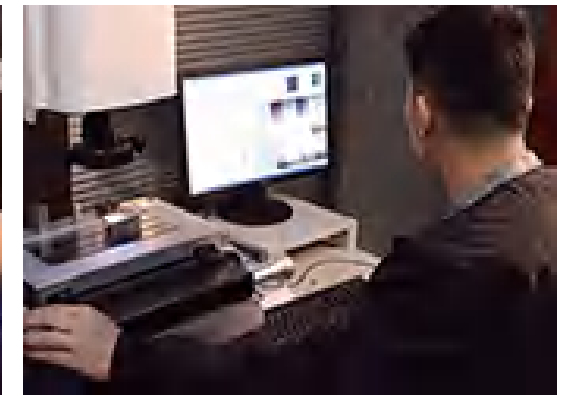
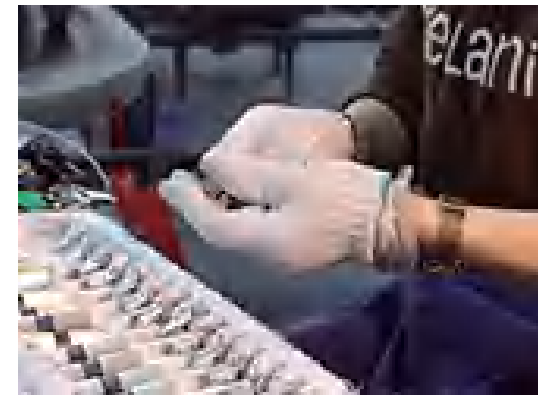
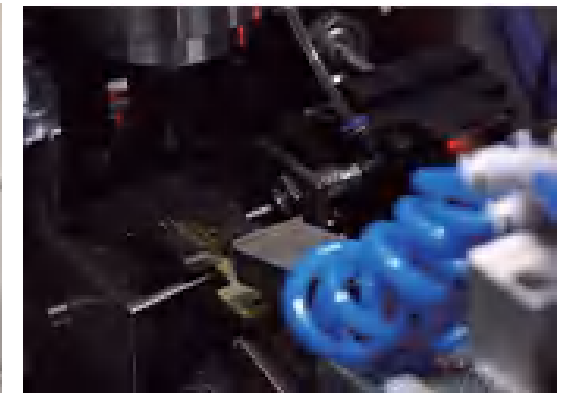




Featured CNC Machines

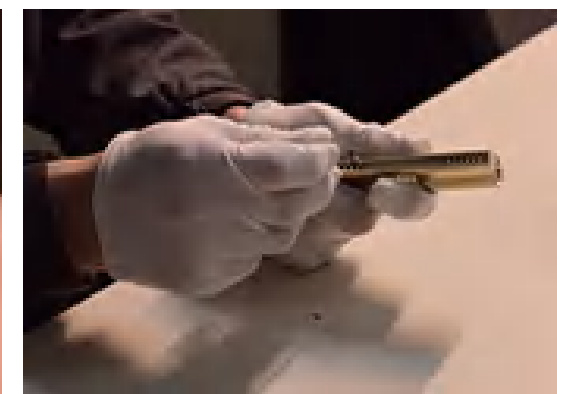
CNC 4-AXIS MACHINING CENTERS

- Controlling the machining tolerance within 0.02mm.
- Produce high precision and complicated products.
- Quick response sampling service.
- Quick mass production machining speed.
- Low MOQ requirement.



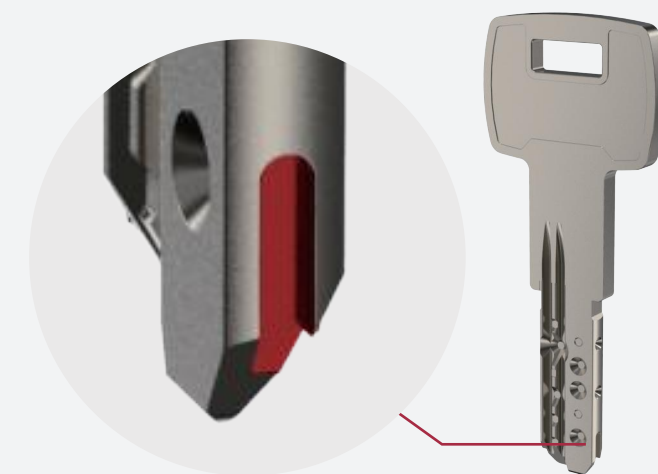
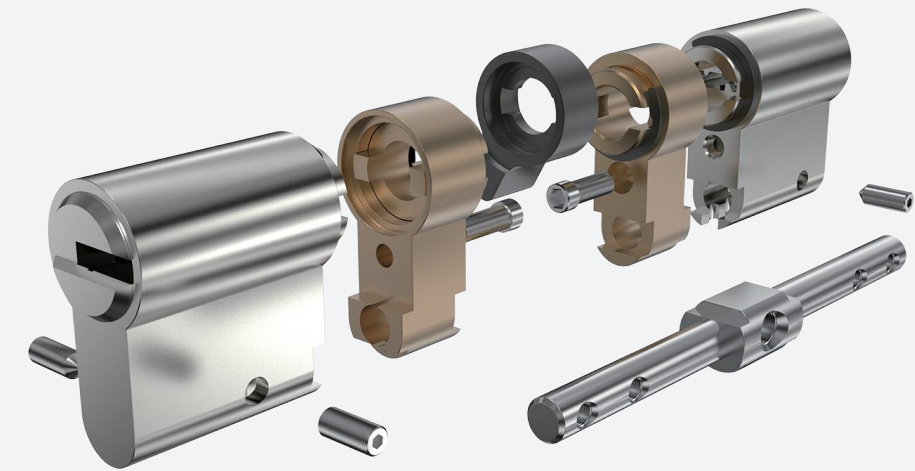
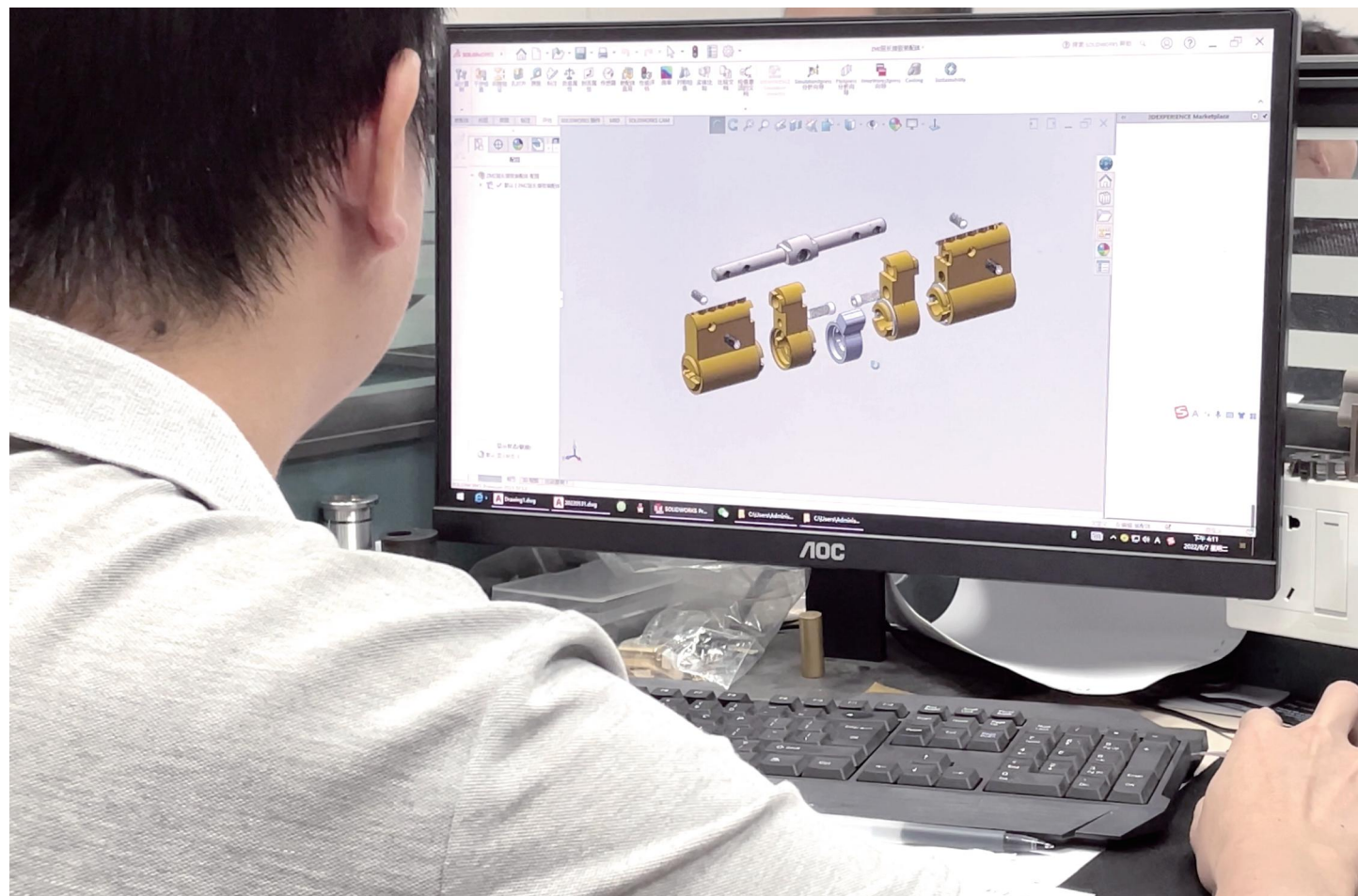
Featured CNC Machines

OTHER MACHINES AND QUALITY MANAGEMENT METHOD

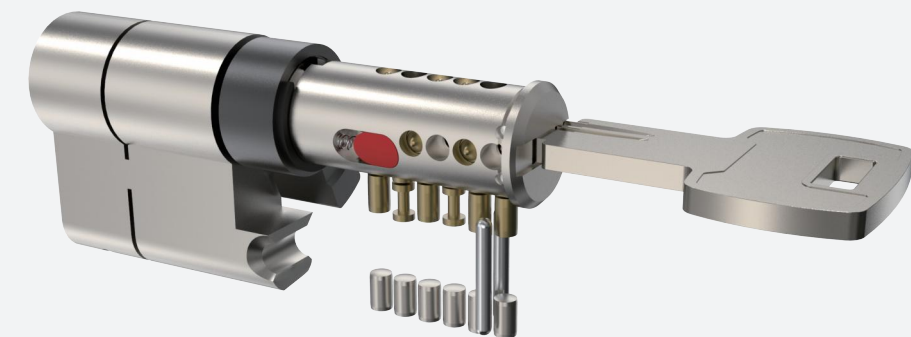


EXPERIENCED R&D TEAM TO DESIGN WHAT YOU WANT

- Share your ideas about new products.
- We issue the technical drawings.
- Then we make samples before mass production.
- 3 machanical engineers, keep developing patent products.



Special cut



EOS patent sliding moving pin

Company: Zhongshan City EOS Secure Products Co., Ltd.
Email: winny@eos-secure.com
Mobile: +86 -13420436003
Add: No.29 Ronghua South Road, Xiaolan Town,
Zhongshan City, Guangdong Province, China



EOS SECURE 2023 CATALOGUE

Patent Security Lock Cylinders
Locking System Lock Cylinders
MANUFACTURER

PATENT LOCK CYLINDERS



PATENT LOCK CYLINDERS

Patent Security Lock Cylinders
Locking System Lock Cylinders
MANUFACTURER



P1

Telescopic Pin Lock Cylinder
with Patented Move Element



P2

Dimple Pin Lock Cylinder
with Patented Move Element



P3

Master Key System Lock Cylinder
with Patented Move Element



P4

Active Pin with Passive Pin Lock
Cylinder with Patented Move
Element and Anti Pick Slider



P5

Double Row Dimple Pin Lock Cylinder
with Patented Move Element

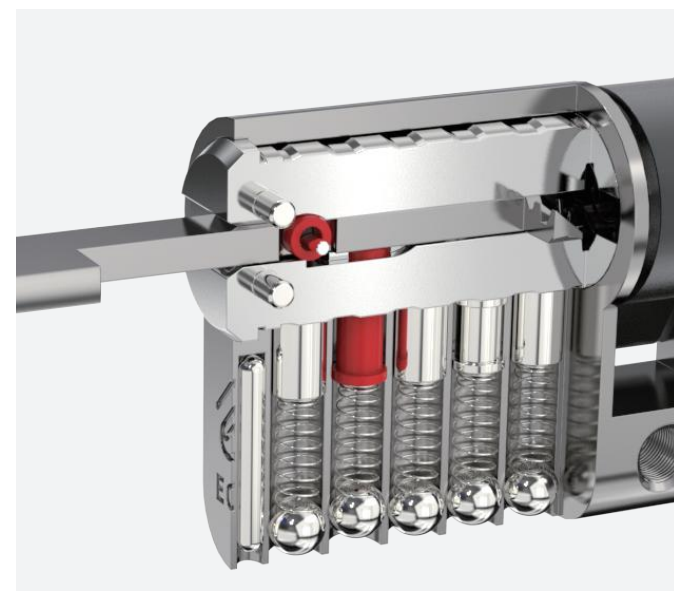
P1**NEW!**

TELESCOPIC PIN LOCK CYLINDER WITH PATENTED MOVE ELEMENT

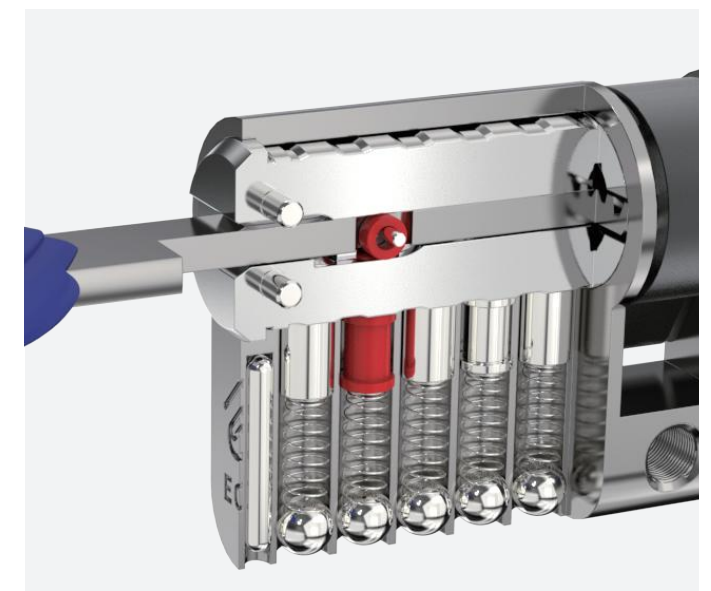
- Patented move element on key blanks to protect your profits.
- Customize different keyways to protect your profits.
- Easy to make key duplicate.
- Precision lock cylinder, you can assemble complete cylinders locally with just parts.
- Customize your logo on the product and packing.
- Available for making master key system.
- Available with key code card.
- Customize to pass security cylinder certificate.
- Optional to make modular system.
- Optional double-entry function.



The roller goes upwards.



The groove inside the plug changes the direction of the roller.



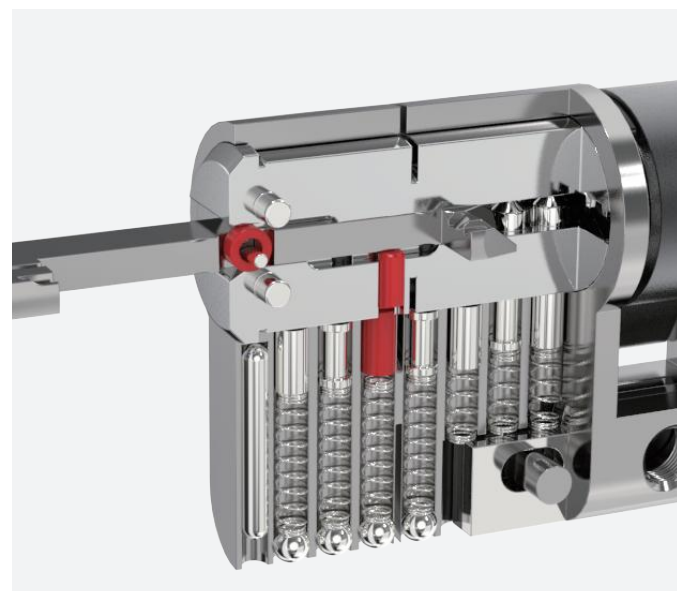
The roller goes downwards.
The plug meets the shear line.

P2

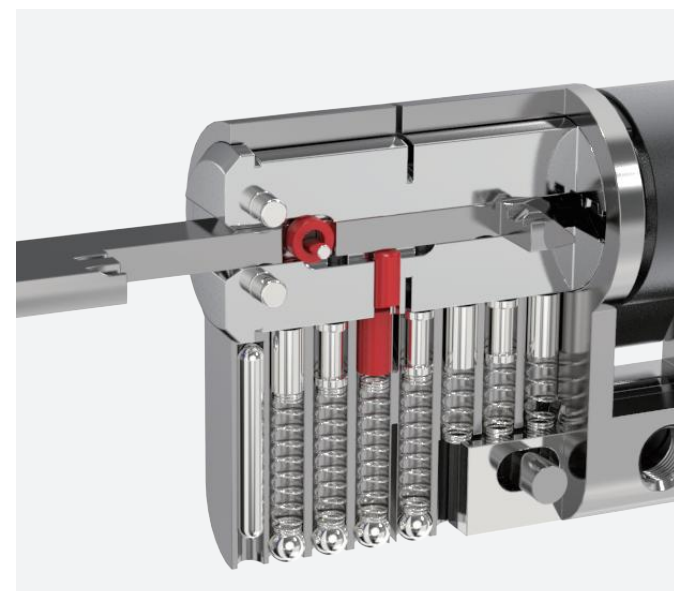
DIMPLE PIN LOCK CYLINDER WITH PATENTED MOVE ELEMENT

NEW!

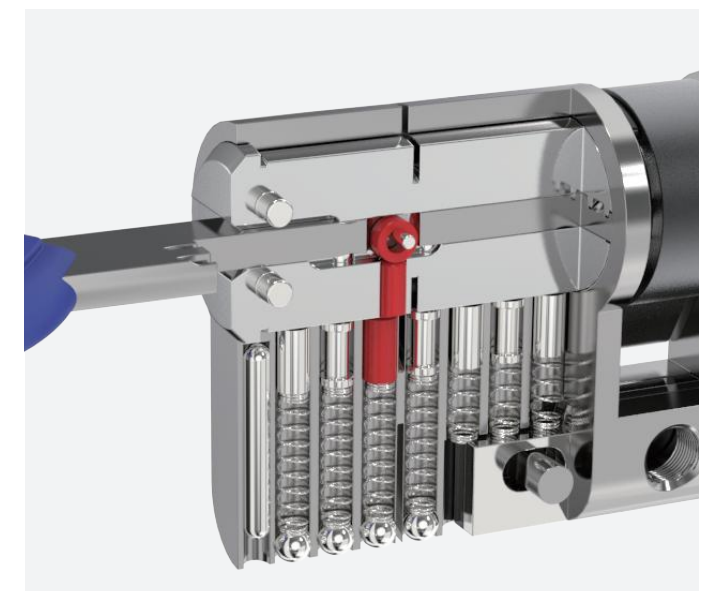
- Patented move element on key blanks to protect your profits.
- Customize different keyways to protect your profits.
- Easy to make key duplicate.
- Precision lock cylinder, you can assemble complete cylinders locally with just parts.
- Customize your logo on the product and packing.
- Available for making master key system.
- Available with key code card.
- Customize to pass security cylinder certificate.
- Optional to make modular system.
- Optional double-entry function.



The roller goes upwards.



The groove inside the plug changes the direction of the roller.

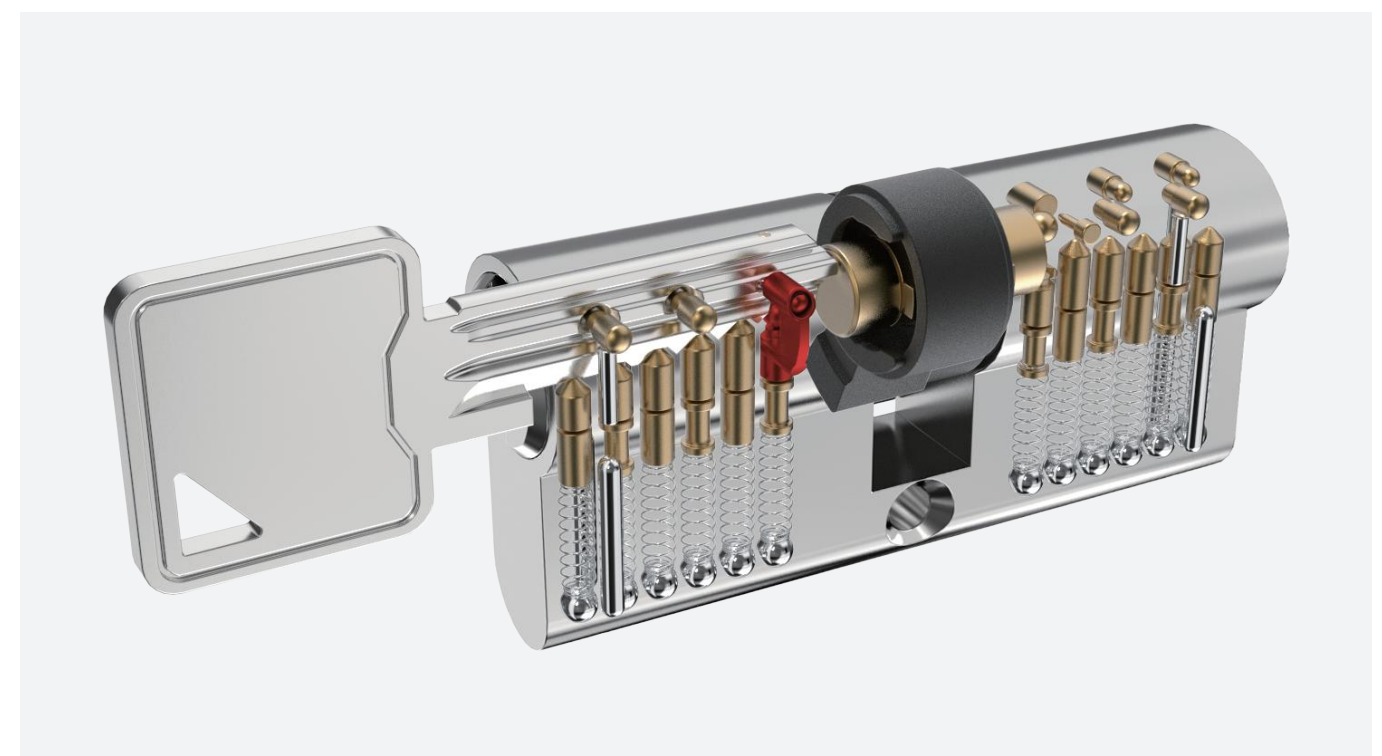


The roller goes downwards.
The plug meets the shear line.

P3**NEW!**

MASTER KEY SYSTEM LOCK CYLINDER WITH PATENTED MOVE ELEMENT

- Patented move element on key blanks to protect your profits.
- Customize different keyways to protect your profits.
- Easy to make key duplicate.
- Precision lock cylinder, you can assemble complete cylinders locally with just parts.
- Customize your logo on the product and packing.
- Available for making master key system.
- Available with key code card.
- Customize to pass security cylinder certificate.
- Optional to make modular system.
- Optional double-entry function.



P4

ACTIVE PIN WITH PASSIVE PIN LOCK CYLINDER WITH PATENTED MOVE ELEMENT AND ANTI PICK SLIDER

NEW!

- Patented move element and anti pick slider on key blanks to protect your profits.
- Active pin with passive pin lock cylinder structure.
- Customize different keyways to protect your profits.
- Easy to make key duplicate.
- Convenient to assemble small-scale master key system by using the passive pins.
- Precision lock cylinder, you can assemble complete cylinders locally with just parts.
- Customize your logo on the product and packing.
- Available for making master key system.
- Available with key code card.
- Customize to pass security cylinder certificate.
- Optional to make modular system.
- Optional double-entry function.

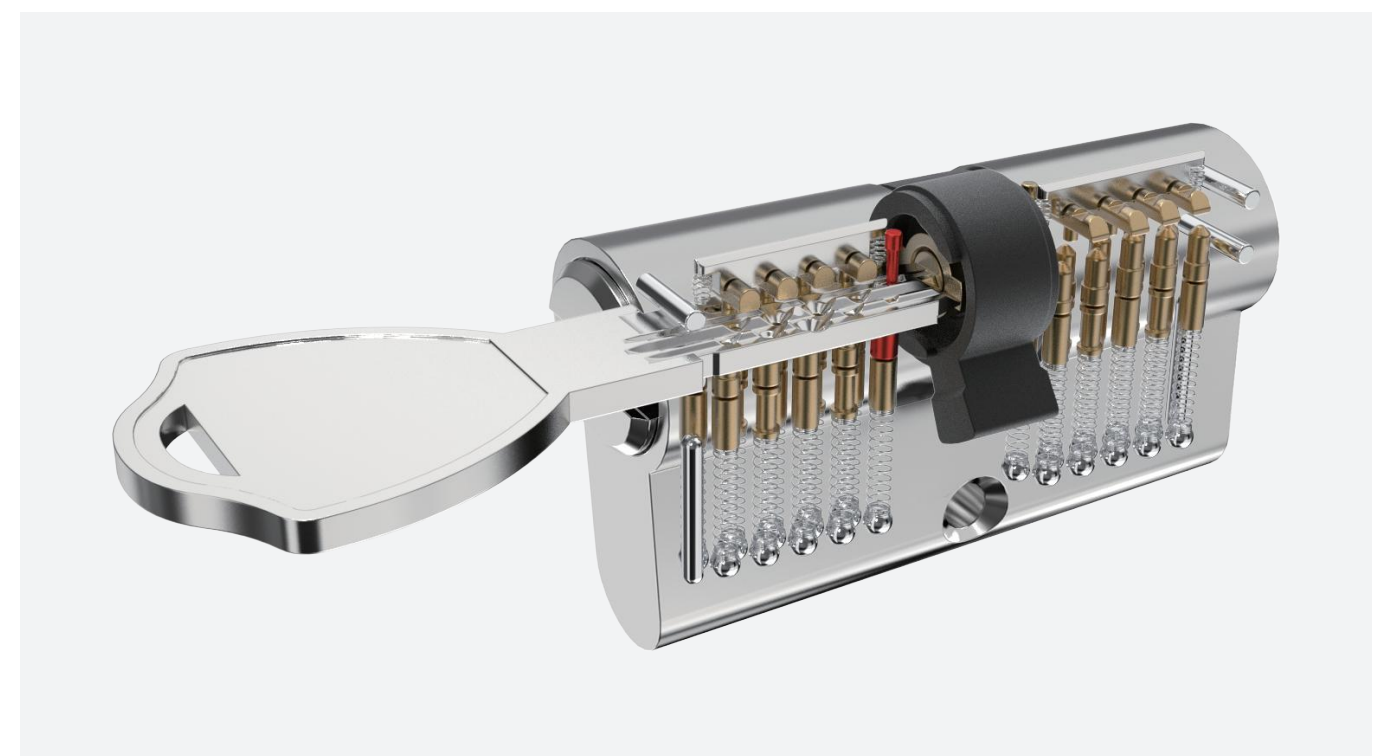


Patented Slider for Anti-Pick

P5**NEW!**

DOUBLE ROW DIMPLE PIN LOCK CYLINDER WITH PATENTED MOVE ELEMENT

- Patented move element on key blanks to protect your profits.
- Customize different keyways to protect your profits.
- Easy to make key duplicate.
- Precision lock cylinder, you can assemble complete cylinders locally with just parts.
- Customize your logo on the product and packing.
- Available for making master key system.
- Available with key code card.
- Customize to pass security cylinder certificate.
- Optional to make modular system.
- Optional double-entry function.



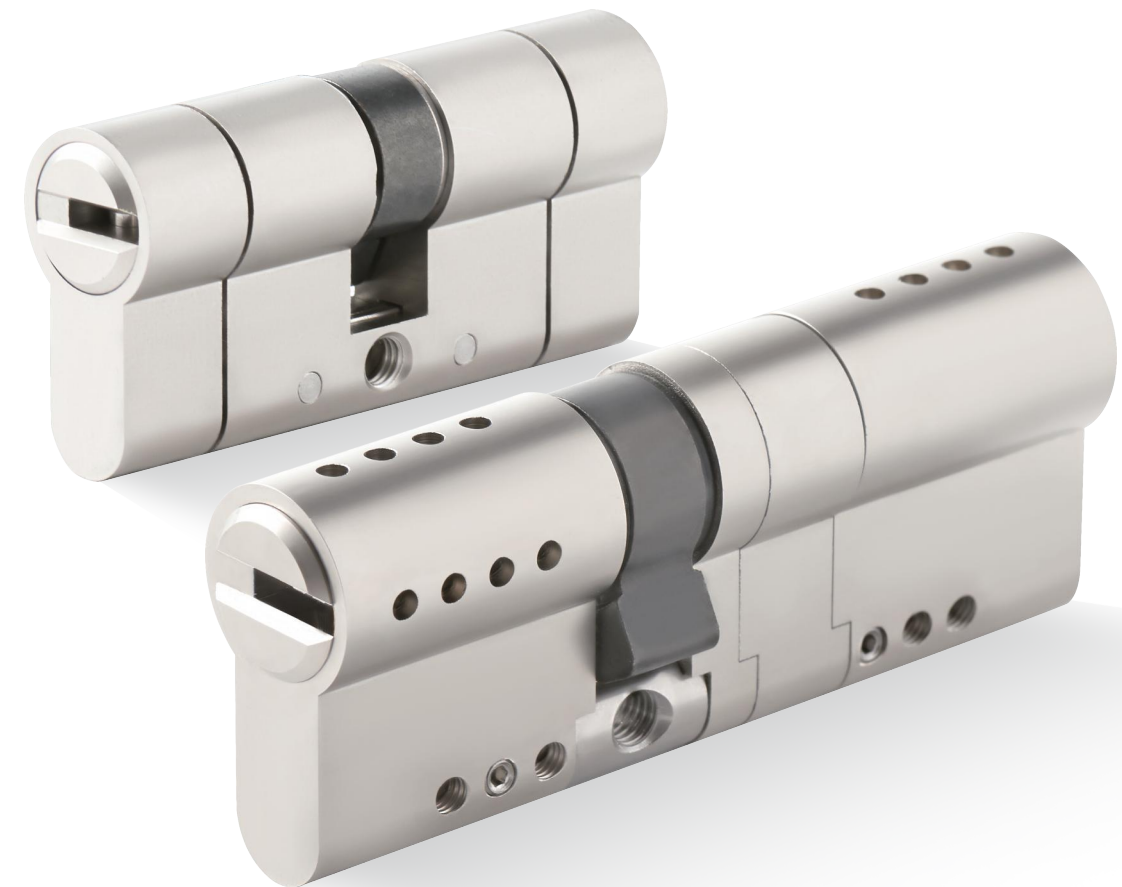
Company: Zhongshan City EOS Secure Products Co., Ltd.
Email: winny@eos-secure.com
Mobile: +86 -13420436003
Add: No.29 Ronghua South Road, Xiaolan Town,
Zhongshan City, Guangdong Province, China



EOS SECURE 2023 CATALOGUE

Patent Security Lock Cylinders
Locking System Lock Cylinders
MANUFACTURER

HIGH SECURITY CYLINDERS



HIGH SECURITY CYLINDERS

Patent Security Lock Cylinders
Locking System Lock Cylinders
MANUFACTURER



S1

Telescopic Pin Lock Cylinder
with Move Element



S2

Anti-Pick Keyway Cylinder
with Side Pins



LK13

Dimple Key 7 Pin Lock Cylinder



LK16

Telescopic Pin Lock Cylinder
with Move Element



LK16-1

Telescopic Pin Lock Cylinder
with Move Element



LK16-2

Telescopic Pin Lock Cylinder
with Move Element

MORE

Active Pins and Passive Pins Security Cylinder

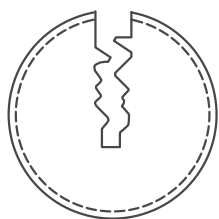
TELESCOPIC PIN LOCK CYLINDER **NEW!** WITH MOVE ELEMENT

- Patented modular system. Patented move element cylinder.
- Able to pass EN1303 6D test.
- Few sizes of connecting bridges to assemble most popular sizes.
- Able to assemble as knob cylinder, emergency double clutch cylinder, double cylinder and half cylinder.
- Customize different keyways to protect your profits.
- Easy to make key duplicate.
- Back pins and side pins to increase key combination.
- Precision lock cylinder, you can assemble complete cylinders locally with just parts.
- Customize your logo on the product and packing.
- Available for making master key system.
- Available with key code card.
- Optional to make modular system.
- Optional double-entry function.



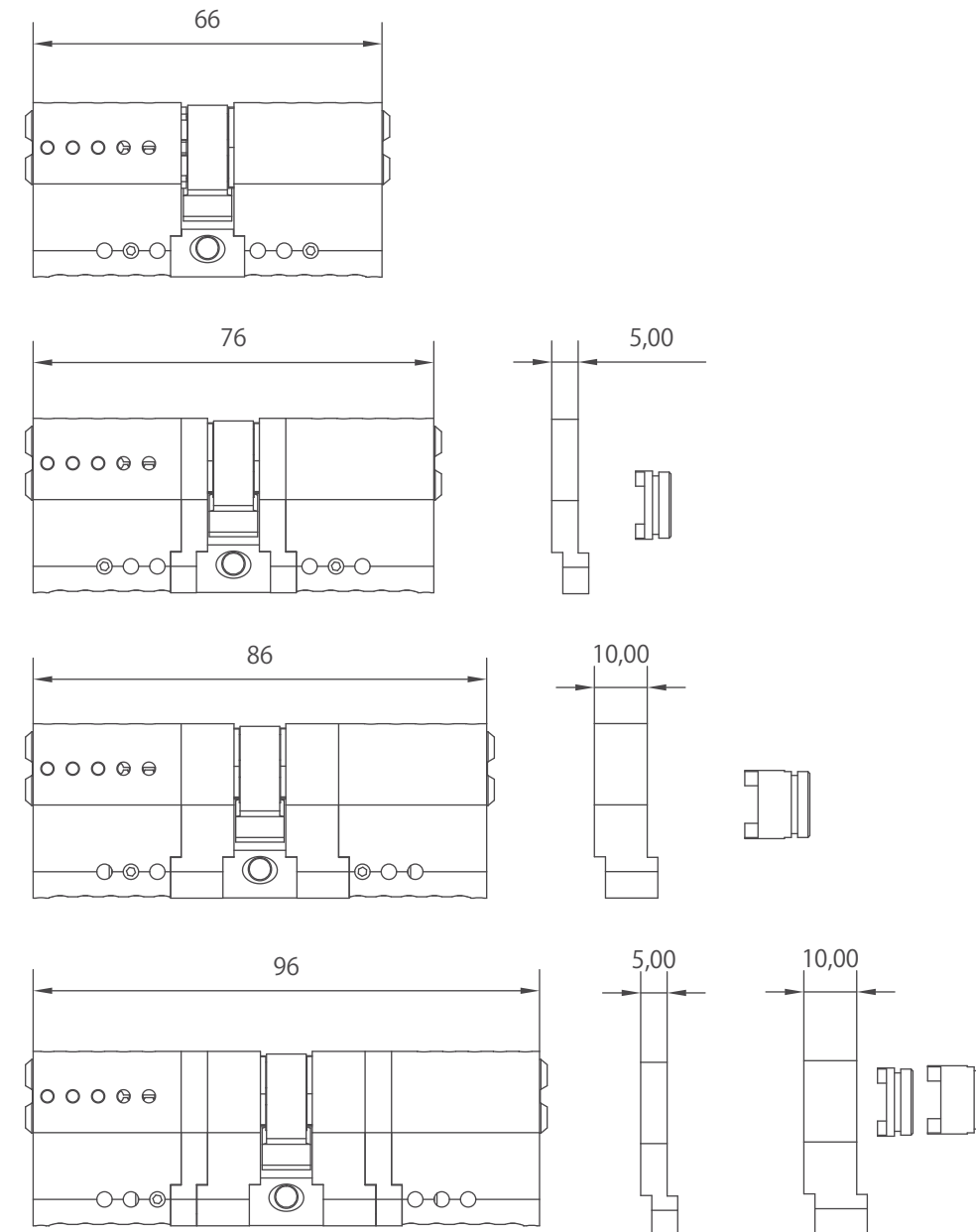
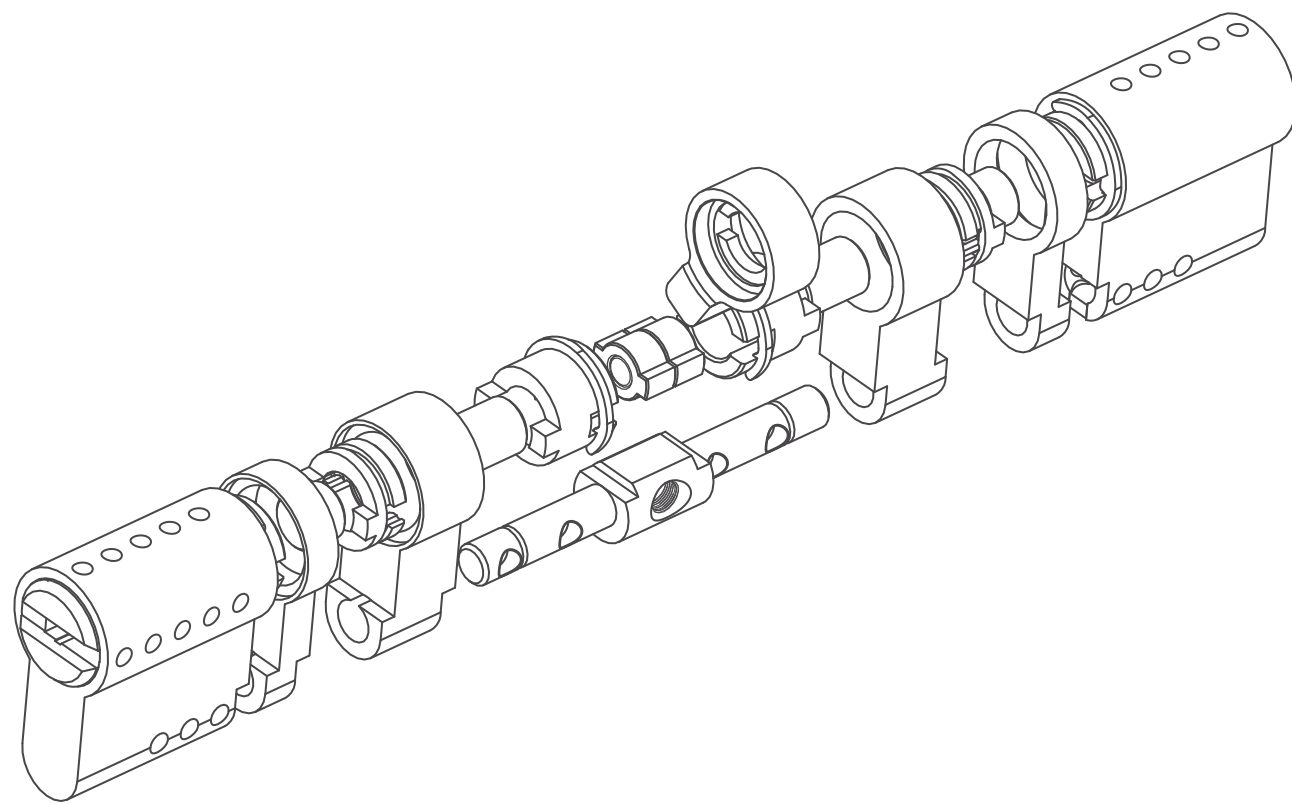
ANTI-PICK KEYWAY CYLINDER **NEW!** WITH SIDE PINS

- Few sizes of connecting bridges to assemble most popular sizes.
- Able to assemble as knob cylinder, emergency double clutch cylinder, double cylinder and half cylinder.
- Customize different keyways to protect your profits.
- Easy to make key duplicate.
- Precision lock cylinder, you can assemble complete cylinders locally with just parts.
- Customize your logo on the product and packing.
- Available for making master key system.
- Available with key code card.
- Optional to make modular system.
- Optional double-entry function.








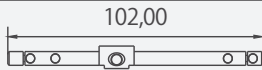
Anti Pick Keyway

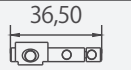
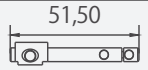


S1 / S2**CUSTOMIZE THE LENGTH OF THE LOCK CYLINDER**

8 sizes of connecting bridges to assemble most common lengths

Connecting bridge (both sides have same length)		
		
Available assembling length	Available assembling length	Available assembling length
33+33=66MM	33+33+15=96MM	33+33+30=126MM
33+33+5=76MM	33+33+20=106MM	33+33+35=136MM
33+33+10=86MM	33+33+25=116MM	33+33+40=146MM
33+33+15=96MM	33+33+30=126MM	33+33+45=156MM

Off-set connecting bridge (both sides have different length)		
		
Available assembling length	Available assembling length	Available assembling length
33/33+15=81MM	33/33+30=96MM	33+15/33+30=111MM
33+5/33+20=91MM	33+5/33+35=106MM	33+20/33+35=121MM
33+10/33+25=101MM	33+10/33+40=116MM	33+25/33+40=131MM
33+15/33+30=111MM	33+15/33+45=126MM	33+30/33+45=141MM

Half cylinder connecting bridge	
	
Available assembling length	Available assembling length
10+33=43MM	10+33+15=58MM
10+33+5=48MM	10+33+20=63MM
10+33+10=53MM	10+33+25=68MM
10+33+15=58MM	10+33+30=73MM

LK13

DIMPLE KEY 7 PIN LOCK CYLINDER

- Customize different keyways to protect your profits.
- Easy to make key duplicate.
- Precision lock cylinder, you can assemble complete cylinders locally with just parts.
- Customize your logo on the product and packing.
- Available for making master key system.
- Available with key code card.
- Customize to pass security cylinder certificate.
- Optional to make modular system.
- Optional double-entry function.





LK16 / LK17

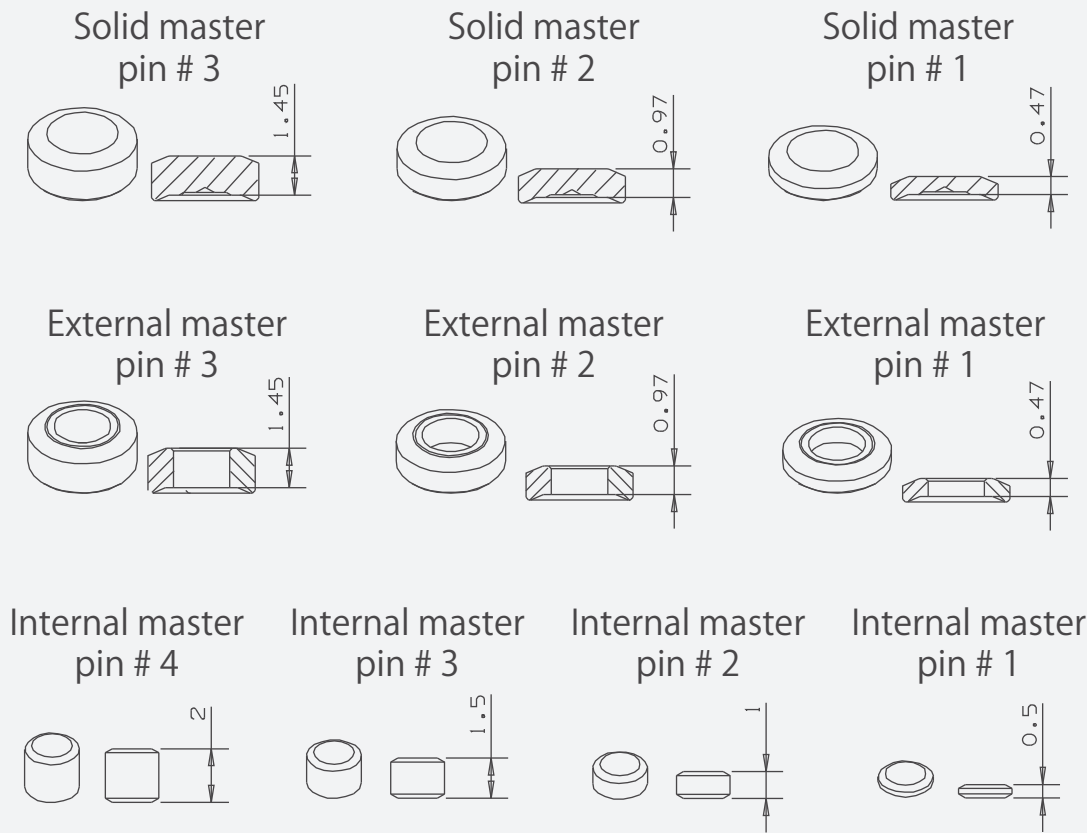
TELESCOPIC PIN LOCK CYLINDER WITH MOVE ELEMENT

- Customize different keyways to protect your profits.
- Easy to make key duplicate.
- Different security features to increase the security levels.
- Precision lock cylinder, you can assemble complete cylinders locally with just parts.
- Customize your logo on the product and packing.
- Available for making master key system.
- Available with key code card.
- Customize to pass security cylinder certificate.
- Optional to make modular system.
- Optional double-entry function.

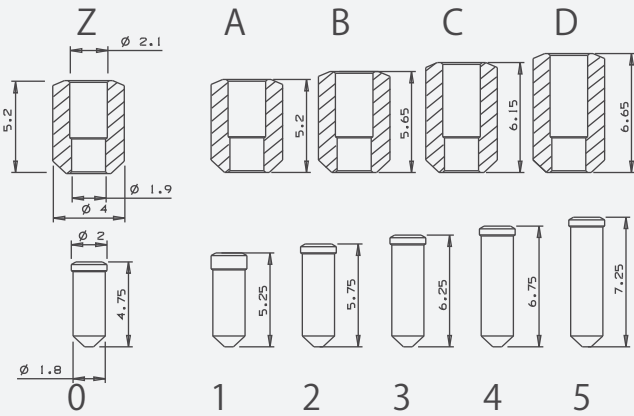
TELESCOPIC PIN CYLINDER
COMPONENTS



MASTER PINS (Unit: MM)



TELESCOPIC KEY PINS (Unit: MM)



DIFFERENT ACCESSORIES FOR DIFFERENT FUNCTIONS



10-tooth gear cam



Thumbturn single open normal cam



Thumbturn clutch



Thumbturn + thumbturn plug



Double open normal clutch



Double open normal cam



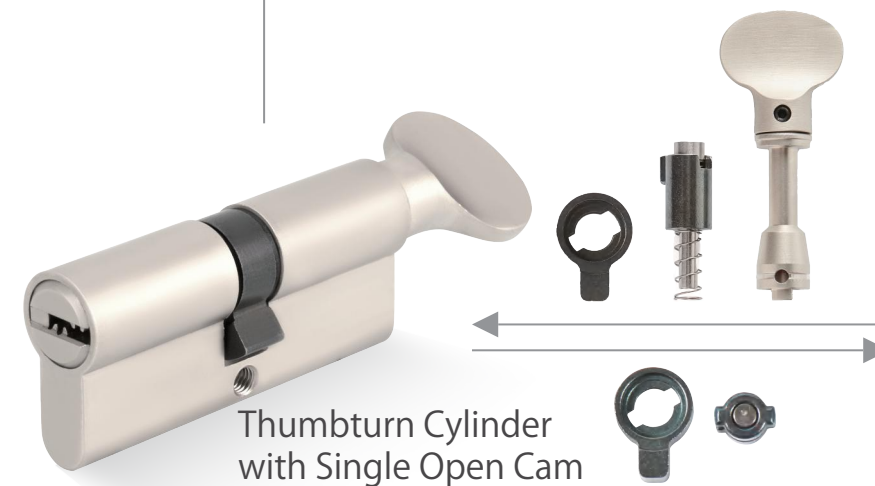
Emergency double clutch



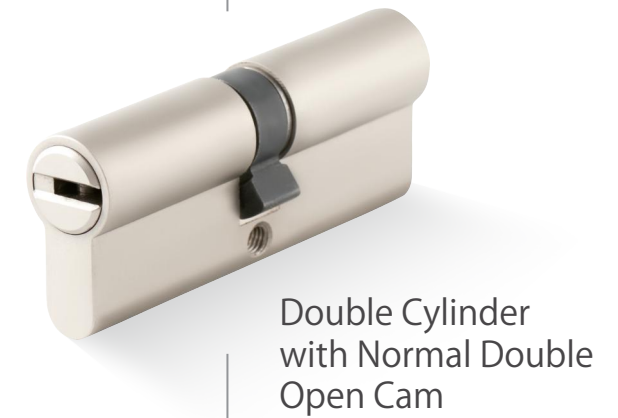
Thumbturn Cylinder with Gear Cam



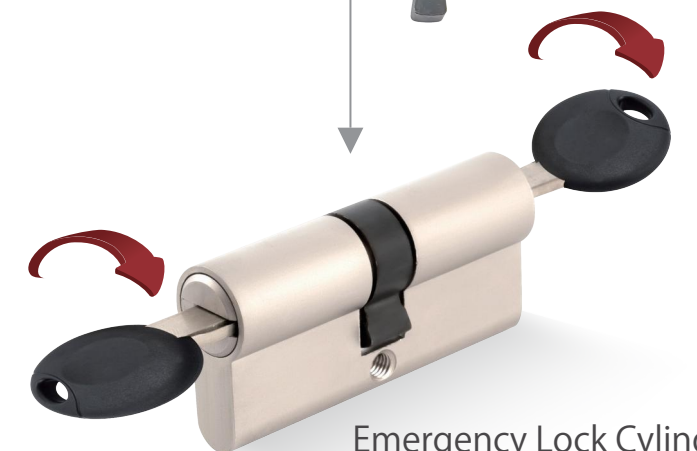
Double Cylinder with Gear Cam



Thumbturn Cylinder with Single Open Cam



Double Cylinder with Normal Double Open Cam

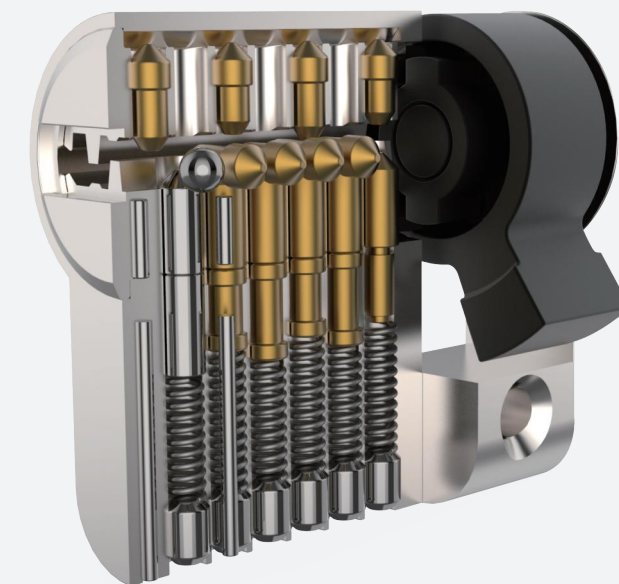


Emergency Lock Cylinder Double-Clutch Function

LK30

ACTIVE PINS AND PASSIVE PINS SECURITY CYLINDER WITH SIDE PINS

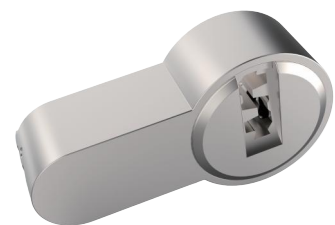
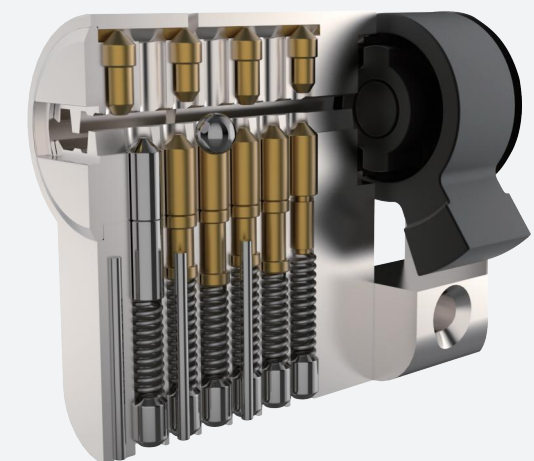
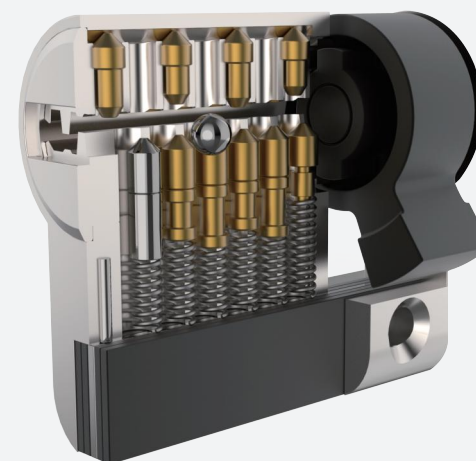
- Customize different keyways to protect your profits.
- Easy to make key duplicate.
- Anti-bumping, anti-drilling features.
- Precision lock cylinder, you can assemble complete cylinders locally with just parts.
- Customize your logo on the product and packing.
- Available for making master key system.
- Available with key code card.
- Customize to pass security cylinder certificate.
- Optional to make modular system.
- Optional double-entry function.



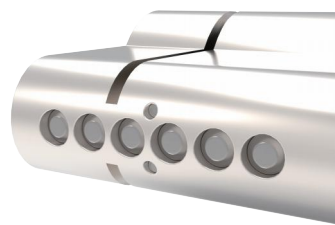
LK31 / LK32

ACTIVE PINS AND PASSIVE PINS SECURITY CYLINDER

- Customize different keyways to protect your profits.
- Easy to make key duplicate.
- Anti-bumping, anti-drilling, anti-breaking features.
- Precision lock cylinder, you can assemble complete cylinders locally with just parts.
- Customize your logo on the product and packing.
- Available for making master key system.
- Available with key code card.
- Customize to pass security cylinder certificate.
- Optional to make modular system.
- Optional double-entry function.



Sacrificial Cut Anti-snap



Anti-Drill Protection
After Snapping



Anti-Break Protection



LK33

ACTIVE PINS AND PASSIVE PINS SECURITY CYLINDER

- Customize different keyways to protect your profits.
- Easy to make key duplicate.
- Anti-bumping, anti-drilling, anti-breaking features.
- Precision lock cylinder, you can assemble complete cylinders locally with just parts.
- Customize your logo on the product and packing.
- Available for making master key system.
- Available with key code card.
- Customize to pass security cylinder certificate.
- Optional to make modular system.
- Optional double-entry function.

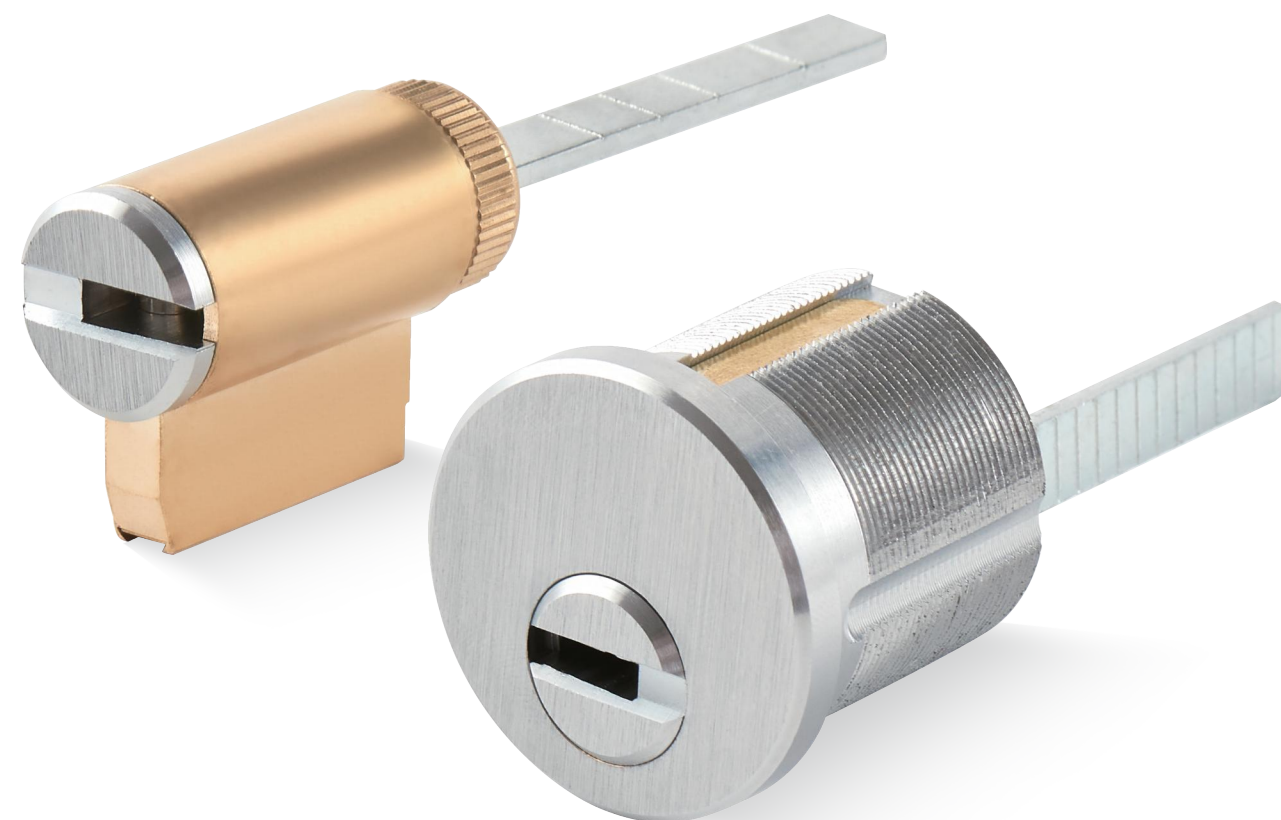
Company: Zhongshan City EOS Secure Products Co., Ltd.
Email: winny@eos-secure.com
Mobile: +86 -13420436003
Add: No.29 Ronghua South Road, Xiaolan Town,
Zhongshan City, Guangdong Province, China



EOS SECURE 2023 CATALOGUE

Patent Security Lock Cylinders
Locking System Lock Cylinders
MANUFACTURER

AMERICAN STANDARD LOCK CYLINDERS



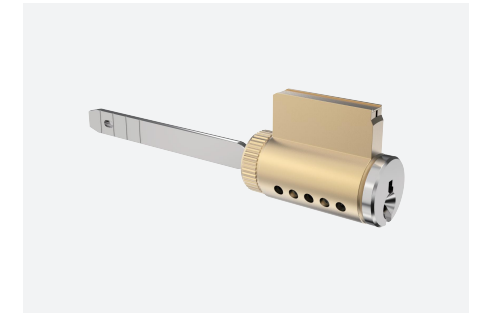
AMERICAN STANDARD LOCK CYLINDERS

Patent Security Lock Cylinders
Locking System Lock Cylinders
MANUFACTURER



A1

Mortise Cylinder with Side Pins



A2

KIK Cylinder with Side Pins



LK20

Telescopic Pin Lock Cylinder
with Move Element



LK23

Telescopic Pin Lock Cylinder
with Move Element



LK26

Telescopic Pin Lock Cylinder
with Move Element



LK29

Telescopic Pin Lock Cylinder
with Move Element

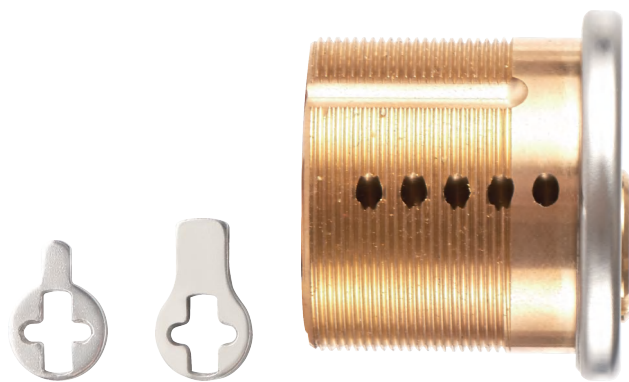
MORE

American Standard Lock Cylinder
Small Format Interchangeable Core (SFIC)

A1

MORTISE CYLINDER **NEW!** WITH SIDE PINS

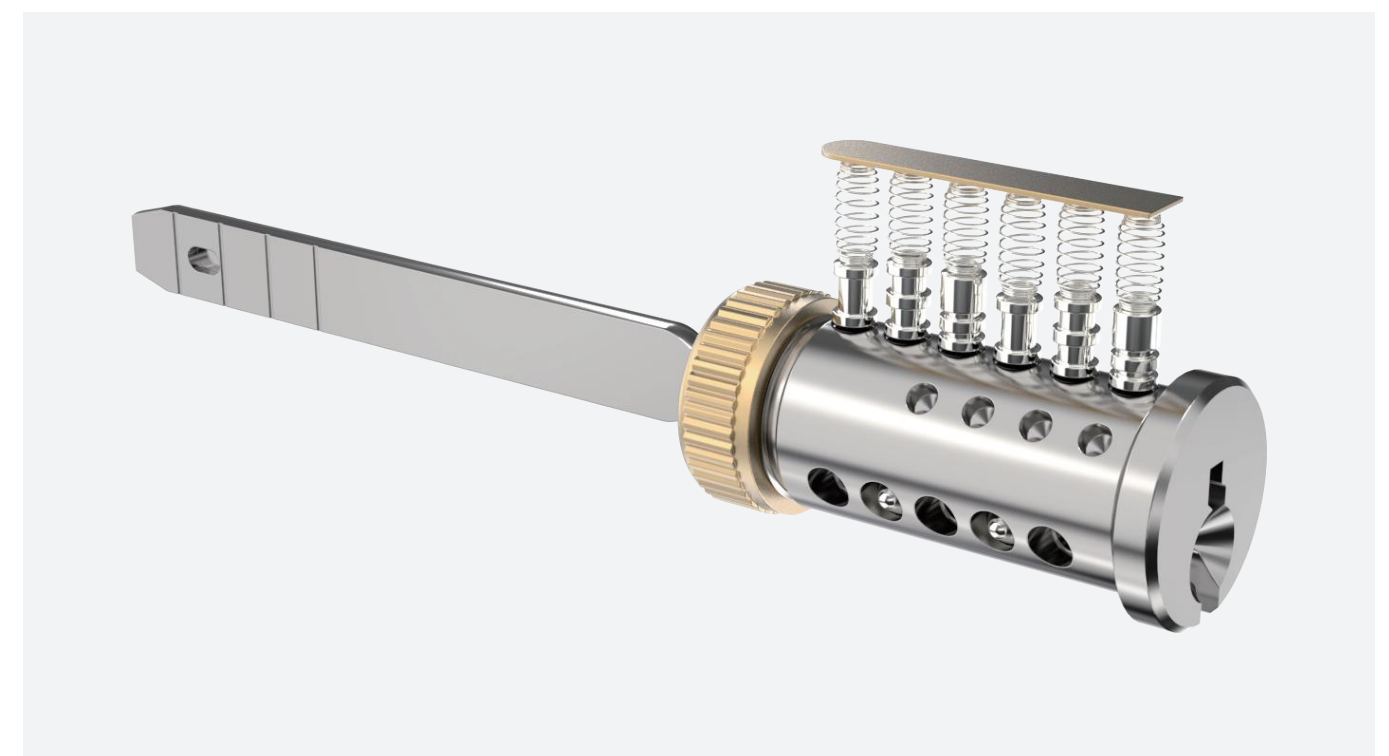
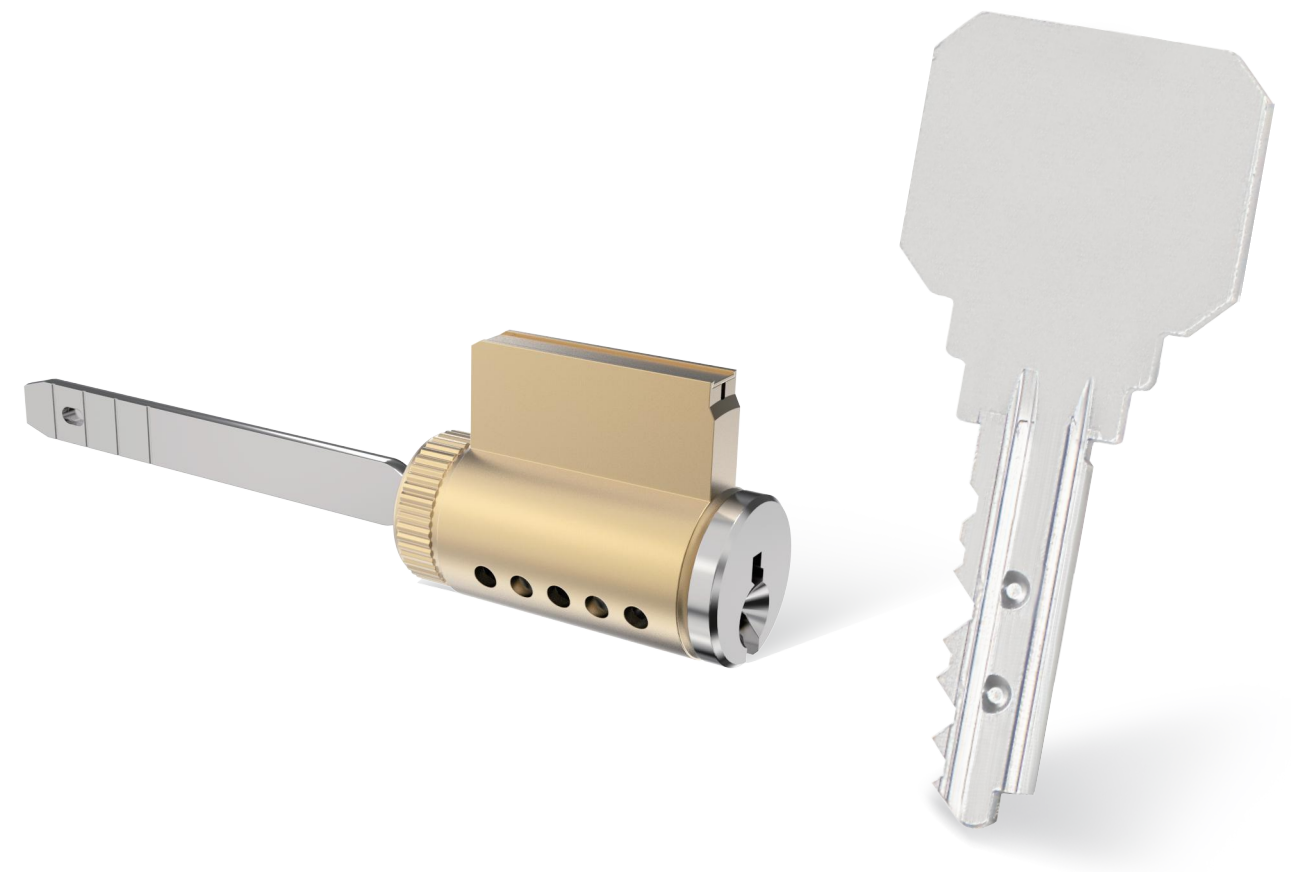
- Customize different keyways to protect your profits.
- Easy to make key duplicate.
- Precision lock cylinder, you can assemble complete cylinders locally with just parts.
- Customize your logo on the product and packing.
- Available for making master key system.

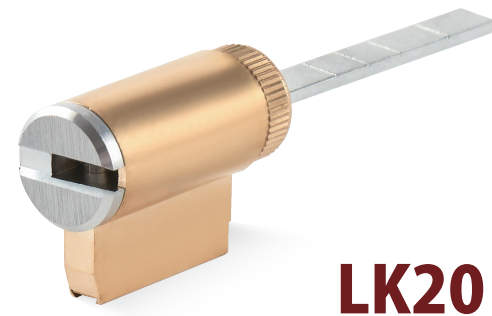
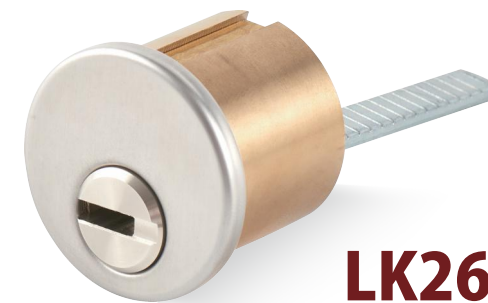
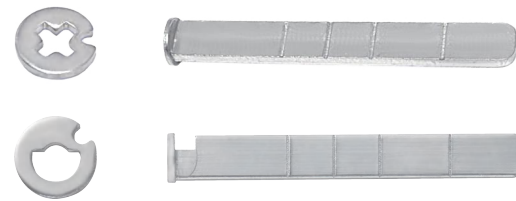
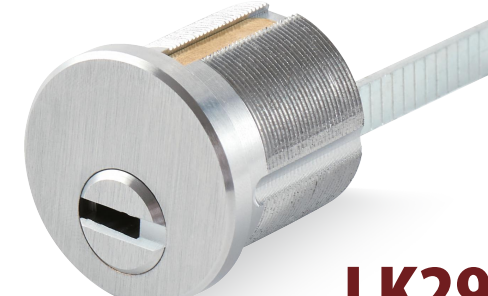
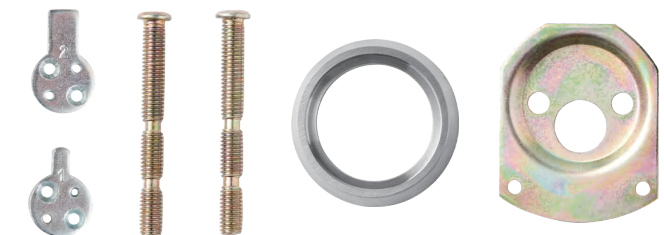


A2

KIK CYLINDER WITH SIDE PINS **NEW!**

- Customize different keyways to protect your profits.
- Easy to make key duplicate.
- Precision lock cylinder, you can assemble complete cylinders locally with just parts.
- Customize your logo on the product and packing.
- Available for making master key system.



**LK20****LK26****LK23****LK29**

TELESCOPIC PIN LOCK CYLINDER WITH MOVE ELEMENT

- Customize different keyways to protect your profits.
- Easy to make key duplicate.
- Suitable for Mortise, KIK, RIM and RIMO cylinder.
- Precision lock cylinder, you can assemble complete cylinders locally with just parts.
- Customize your logo on the product and packing.

- Available for making master key system.
- Available with key code card.



LK5 MORTISE CYLINDER



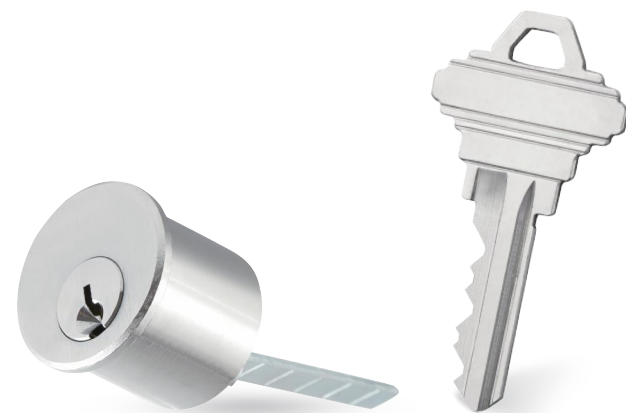
UL CAM ADAM -1



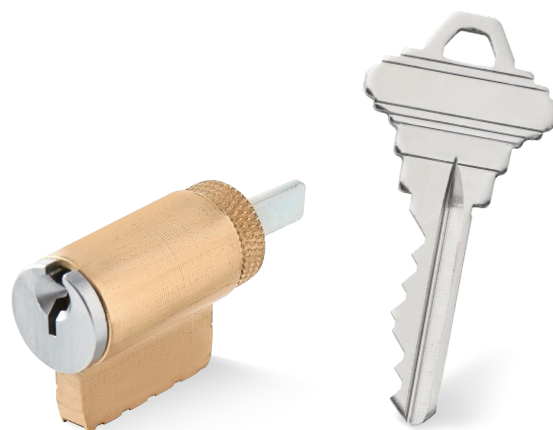
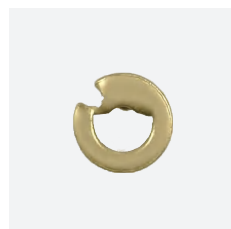
UL CAM YALE -2



LK6 RIM CYLINDER



LK8 KIK CYLINDER



LK5 / LK6 / LK8

AMERICAN STANDARD LOCK CYLINDER

- Standard SC1 or KW1 keyway.
- Customize different keyways to protect your profits.
- Easy to make key duplicate.
- Suitable for Mortise, KIK, RIM and RIMO cylinder.
- Precision lock cylinder, you can assemble complete cylinders locally with just parts.
- Customize your logo on the product and packing.
- Available for making master key system.

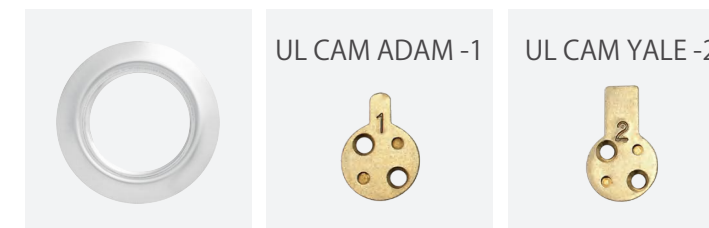
LK9 SFIC (SMALL FORMAT INTERCHAGEABLE CORE)



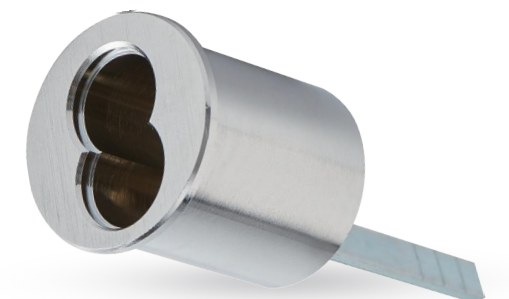
LK9 / LK10 / LK11

SMALL FORMAT INTERCHAGEABLE CORE (SFIC)

LK10 SFIC MORTISE HOUSING



LK11 SFIC RIM HOUSING



- Standard BEST A keyway. Standard BEST A-2 system pins.
- Customize different keyways.
- Easy to make key duplicate.
- Suitable for Mortise, KIK, RIM and RIMO cylinder housings.
- Precision lock cylinder, you can assemble complete cylinders locally with just parts.
- Customize your logo on the product and packing.
- Available for making master key system.

Company: Zhongshan City EOS Secure Products Co., Ltd.
Email: winny@eos-secure.com
Mobile: +86 -13420436003
Add: No.29 Ronghua South Road, Xiaolan Town,
Zhongshan City, Guangdong Province, China



EOS SECURE 2023 CATALOGUE

Patent Security Lock Cylinders
Locking System Lock Cylinders
MANUFACTURER

NORMAL KEY CYLINDERS



NORMAL KEY CYLINDERS

Patent Security Lock Cylinders
Locking System Lock Cylinders
MANUFACTURER



LK2-1

Anti-Pick Keyway Cylinder
with Side Pins



LK3

Anti-Pick Keyway Cylinder
with Side Pins



LK1

Thumbturn (knob) Cylinder



LK1

Double Sided Key Cylinder



LK1

Half Cylinder With Key



LK1

Half Cylinder With Thumbturn

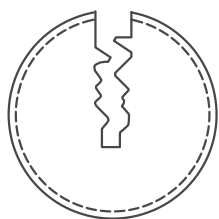
MORE

Privacy Cylinder

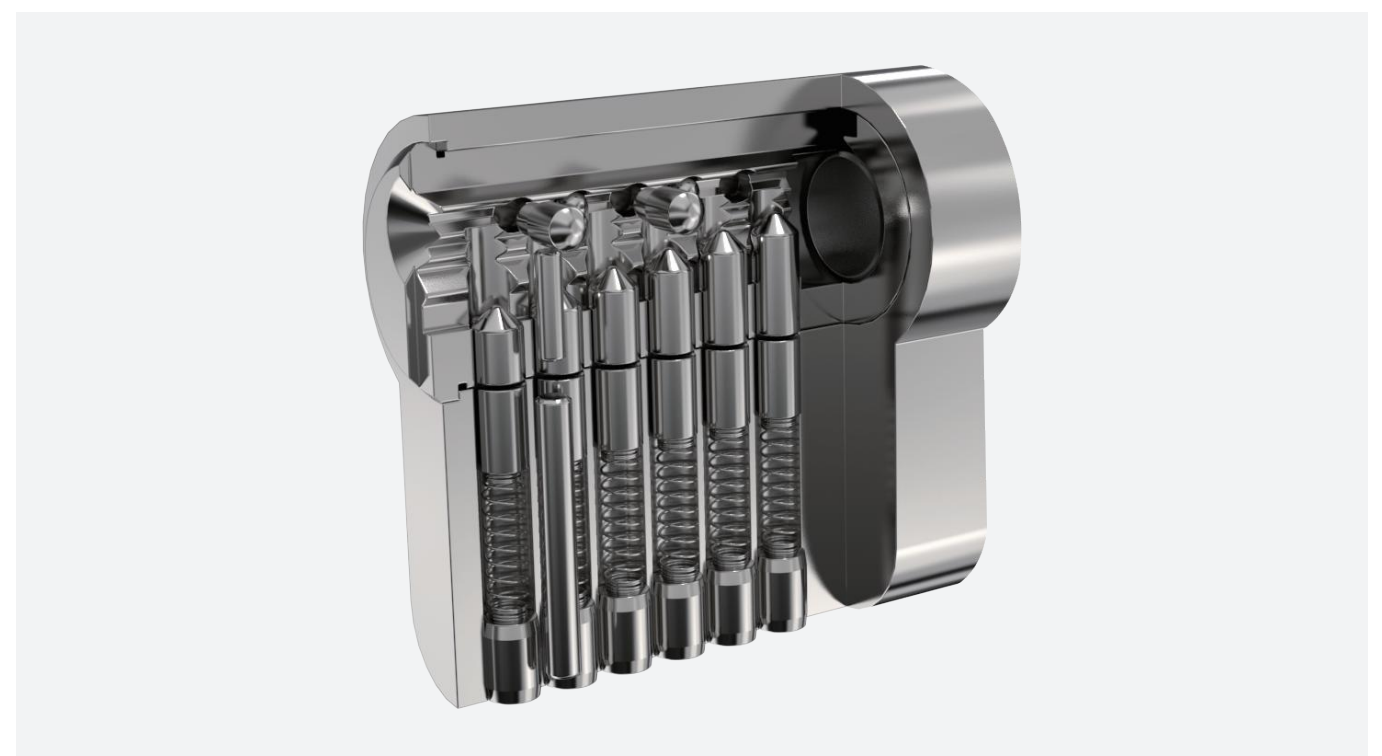
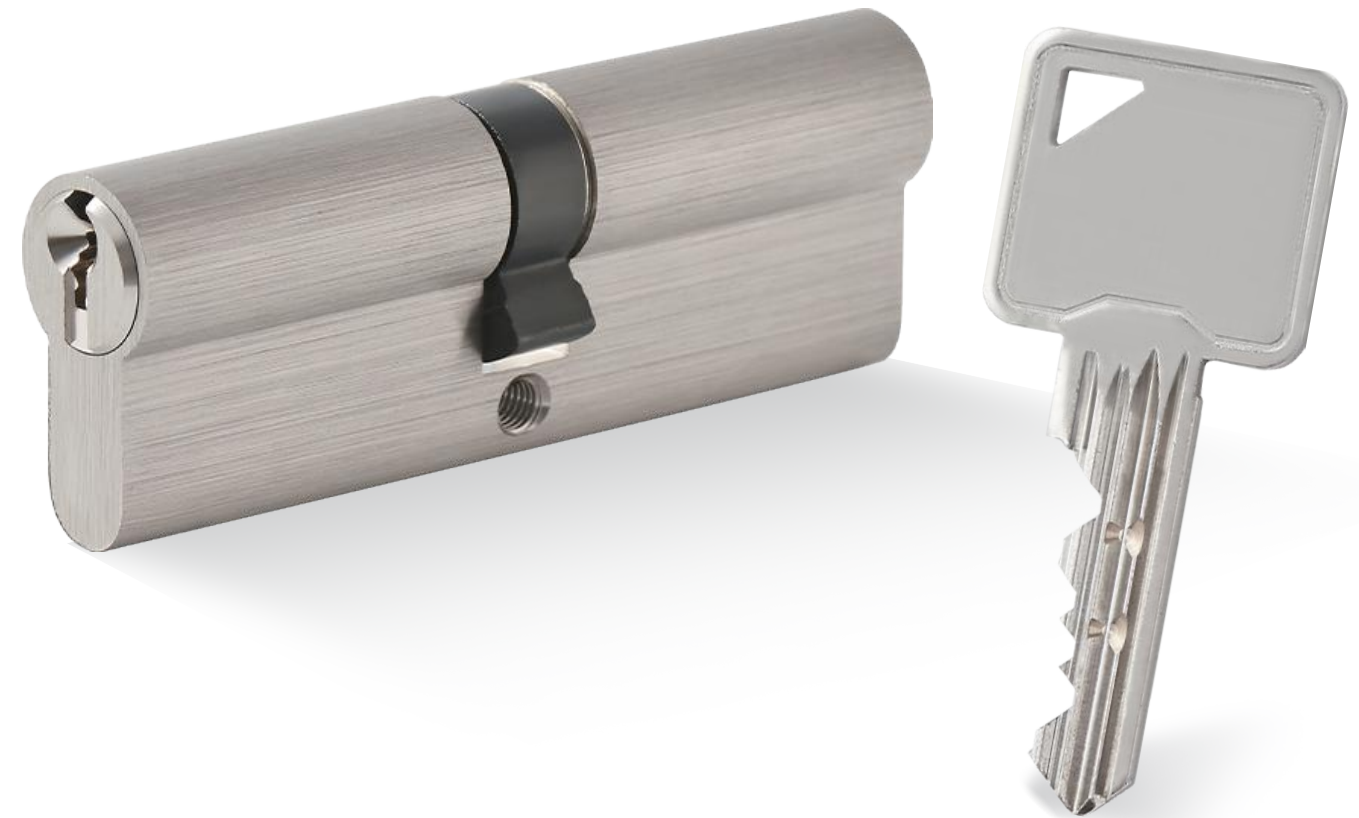
LK2-1

ANTI-PICK KEYWAY CYLINDER WITH SIDE PINS

- Customize different keyways to protect your profits.
- Easy to make key duplicate.
- Precision lock cylinder, you can assemble complete cylinders locally with just parts.
- Customize your logo on the product and packing.
- Available for making master key system.
- Available with key code card.
- Optional to make modular system.
- Optional double-entry function.



Anti Pick Keyway



LK3

ANTI-PICK KEYWAY CYLINDER WITH SIDE PINS

- Customize different keyways to protect your profits.
- Easy to make key duplicate.
- Precision lock cylinder, you can assemble complete cylinders locally with just parts.
- Customize your logo on the product and packing.
- Available for making master key system.
- Available with key code card.
- Optional to make modular system.
- Optional double-entry function.



Anti Pick Keyway

LK1

NORMAL KEY CYLINDERS

40

MASTER KEY SYSTEM LOCK CYLINER

- Standard Yale Keyway.
- Customize different keyways to protect your profits.
- Easy to make key duplicate.
- Precision lock cylinder, you can assemble complete cylinders locally with just parts.
- Customize your logo on the product and packing.
- Customize any lengths for your project.
- Customize any finishes for your project.
- Low MOQ to help you win the project.
- Available for making master key system.



Thumbturn (knob) cylinder



Half cylinder with thumbturn



Double sided key cylinder



Privacy cylinder



Half cylinder with key



Company: Zhongshan City EOS Secure Products Co., Ltd.
Email: winny@eos-secure.com
Mobile: +86 -13420436003
Add: No.29 Ronghua South Road, Xiaolan Town,
Zhongshan City, Guangdong Province, China



EOS SECURE 2023 CATALOGUE

Patent Security Lock Cylinders
Locking System Lock Cylinders
MANUFACTURER

OTHER CYLINDERS



OTHER CYLINDERS

Patent Security Lock Cylinders
Locking System Lock Cylinders
MANUFACTURER



LK46

Scandinavian Round
Lock Cylinder



LK47

Scandinavian Round
Lock Cylinder



LK35

Scandinavian Oval Lock Cylinder



LK35-3

Scandinavian Oval Lock Cylinder



LK34

Scandinavian Oval Lock Cylinder



LK35-1

Scandinavian Oval Lock Cylinder

MORE

Australian Oval Cylinder
Screen Door Cylinder

LK46 / LK47

SCANDINAVIAN ROUND LOCK CYLINDER

- Using standard TV-3D key profile and key blank.
- Optional protected key profile and security card.
- Standard cylinder for the module series.
- Anti pick driver pins and anti drilling pins on the plug and housing.
- 3 Brass or silver nickel key.
- Optional Allen screw seal pin.

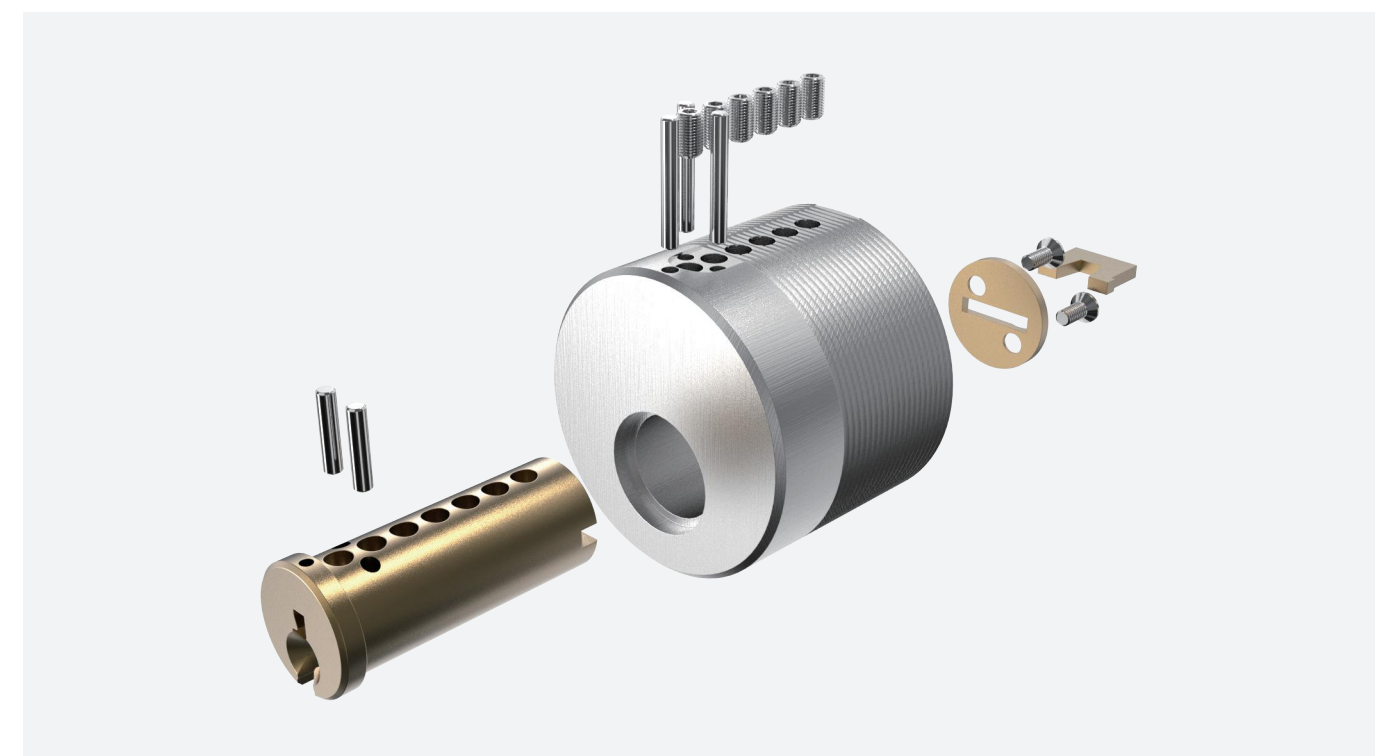


With Stainless Steel Trim



LK46

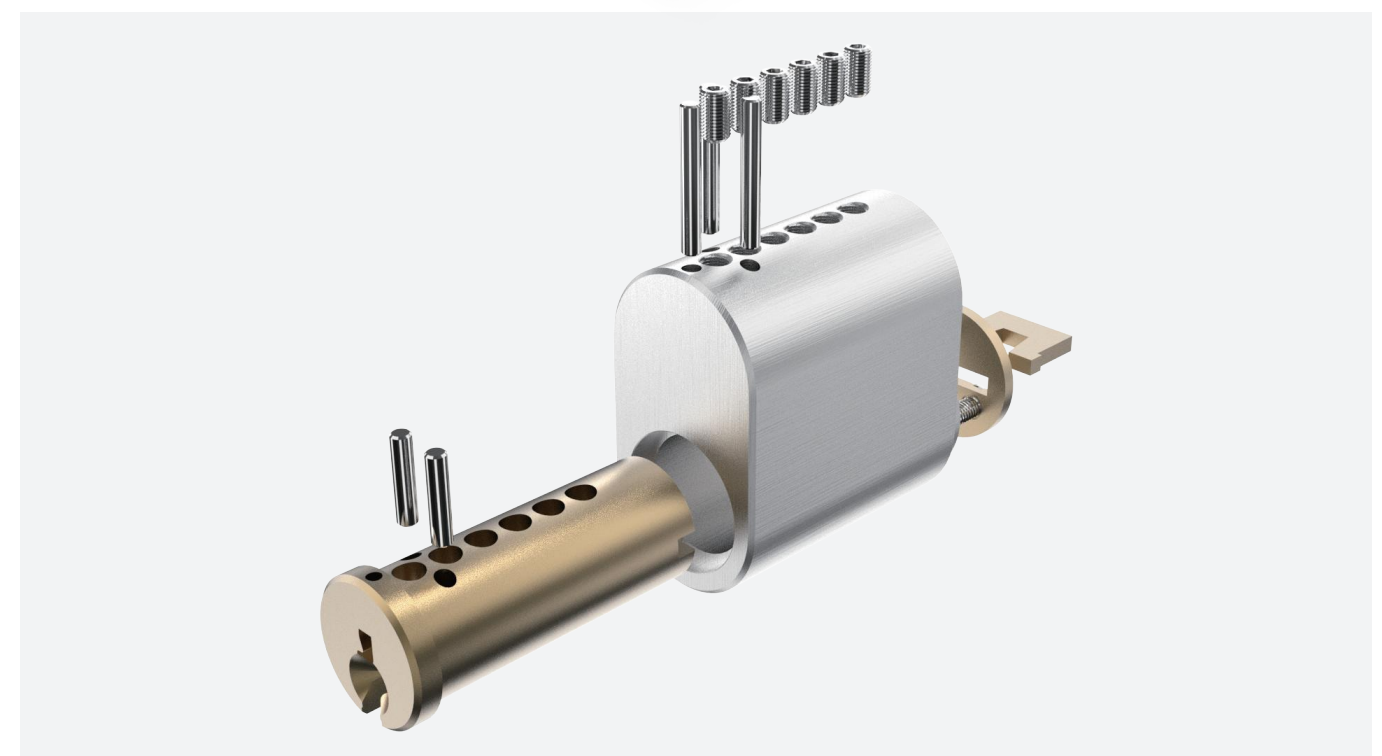
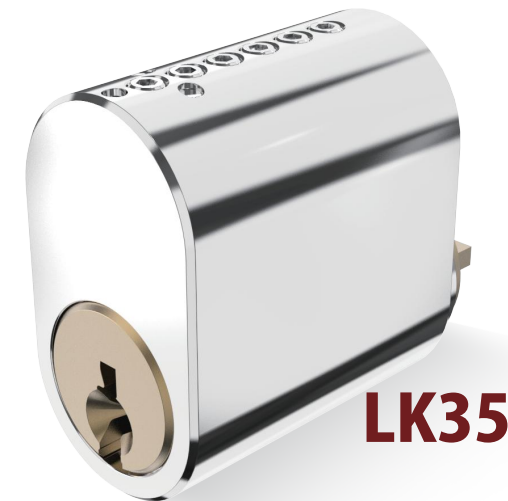
LK47



LK35 / LK35-3

SCANDINAVIAN OVAL LOCK CYLINDER

- Using standard TV-3D key profile, key blank and sleeve ring.
- Optional protected key profile and security card.
- Standard cylinder for the module series.
- Anti pick driver pins and anti drilling pins on the plug and housing.
- 3 Brass or silver nickel key.
- Optional Allen screw seal pin.



LK34

SCANDINAVIAN OVAL LOCK CYLINDER

- Using standard TV-3D key profile and key blank.
- Optional protected key profile and security card.
- Standard cylinder for the module series.
- Anti pick driver pins and anti drilling pins on the plug and housing.
- 3 Brass or silver nickel key.
- Optional Allen screw seal pin.



LK35-1 / LK35-2

SCANDINAVIAN OVAL LOCK CYLINDER

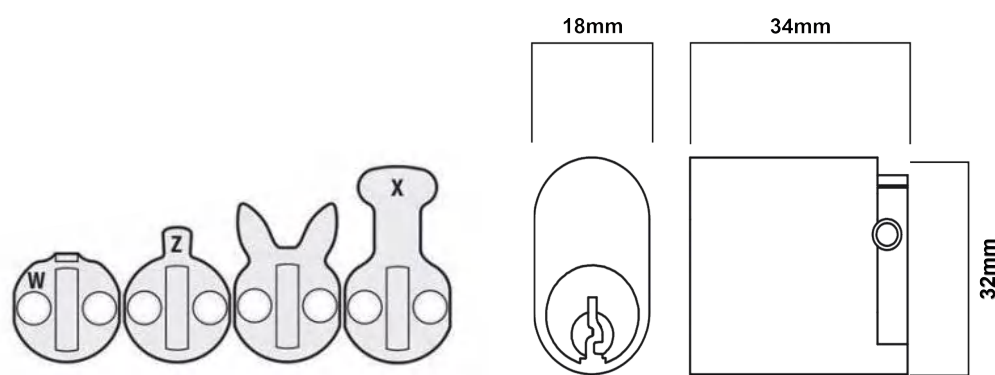
- Using standard AS-HH7 and RU-5D key profile and key blank.
- Optional protected key profile and security card.
- Standard cylinder for the module series.
- Anti pick driver pins and anti drilling pins on the plug and housing.
- 3 Brass or silver nickel key.
- Optional Allen screw seal pin.



LK41

AUSTRALIAN OVAL CYLINDER

- C4 key profile, restricted keyway is optional.
- Optional Satin nickel, Satin chrome or black finish.
- Optional allen screw seal pin for repin or conseal seal pin.
- Construction key and master key systems are available upon request.
- Supplied with the 4 most common cams.



LK42

SCREEN DOOR CYLINDER

- Suits most hinged and sliding security door locks.
- Lazy cam.
- Brass barrel and zinc body construction.
- 2 brass keys.
- Polished chrome finish.
- 62.5mm length.
- Removal cap for easy rekeying.

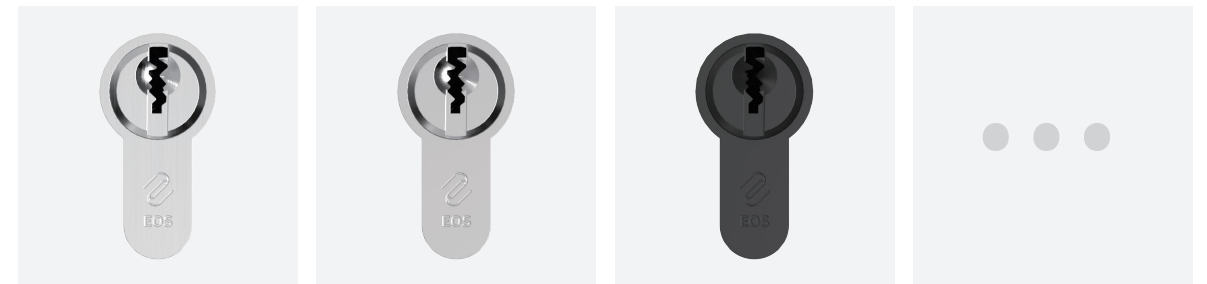


OTHER FUNCTIONS

Patent Security Lock Cylinders
Locking System Lock Cylinders
MANUFACTURER

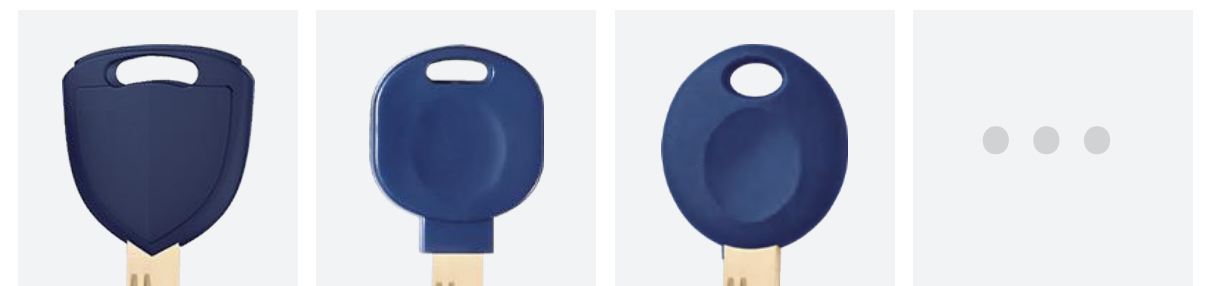
OTHER CYLINDERS

49



AVAILABLE FINISHES

PC, SC, VN (Vibrated), PN, SN,
SBN, PB, SB, PVD, PG, AB BLK



AVAILABLE PLASTIC KEY HEAD IDEAS

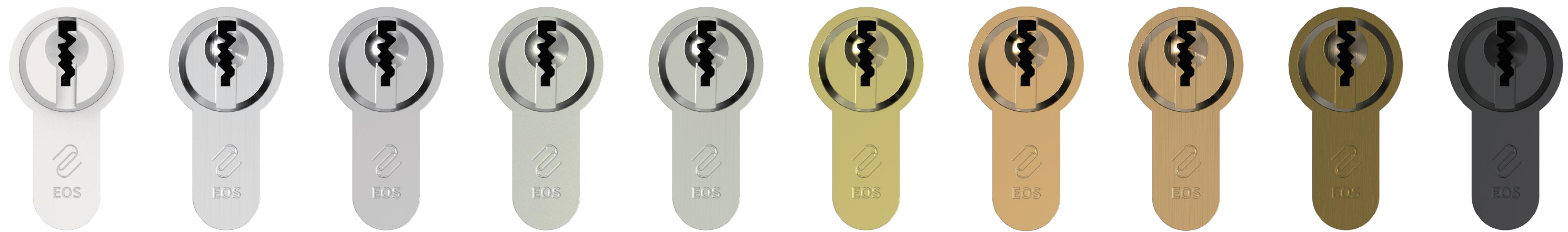
Available Plastic Key Head Ideas



AVAILABLE FUNCTIONS

Emergency Lock Cylinder,
Shaft cylinder

AVAILABLE
FINISHES



AVAILABLE PLASTIC
KEY HEAD IDEAS

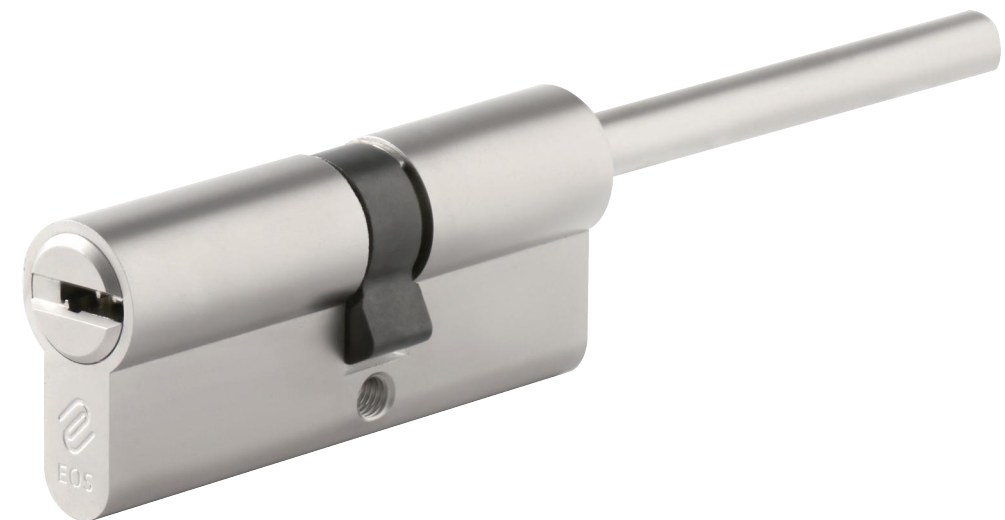


AVAILABLE FUNCTIONS



EMERGENCY LOCK CYLINDER

Double-Clutch Function



SHAFT CYLINDER

Shaft Cylinder